

abbotFox



Norwich, NR1
Guide Price £210,000

“

We are a team of genuine individuals who hold a deep passion for both property and marketing. Collectively, we bring over 70 years of experience in the property market of Norfolk and Suffolk. Our affection for both counties runs deep, and we are enthusiastic about sharing our passion with you.

Colin McKenzie | **Branch Partner**







THE DETAIL _____

Guide £210,000 - £220,000
abbotFox presents this ideal first time buy. Situated within easy reach of Norwich City Centre and a wealth of local amenities, this home is offered to the market with no onward chain.

The internal accommodation is neatly arranged and comprises; entrance hall, lounge, kitchen diner and family bathroom to the ground floor, with three independently accessed bedrooms on the first floor. Benefitting from an enclosed, private rear garden, and ample off road parking to the front, this home offers an abundance of space, and plenty of potential. An internal viewing comes highly recommended.

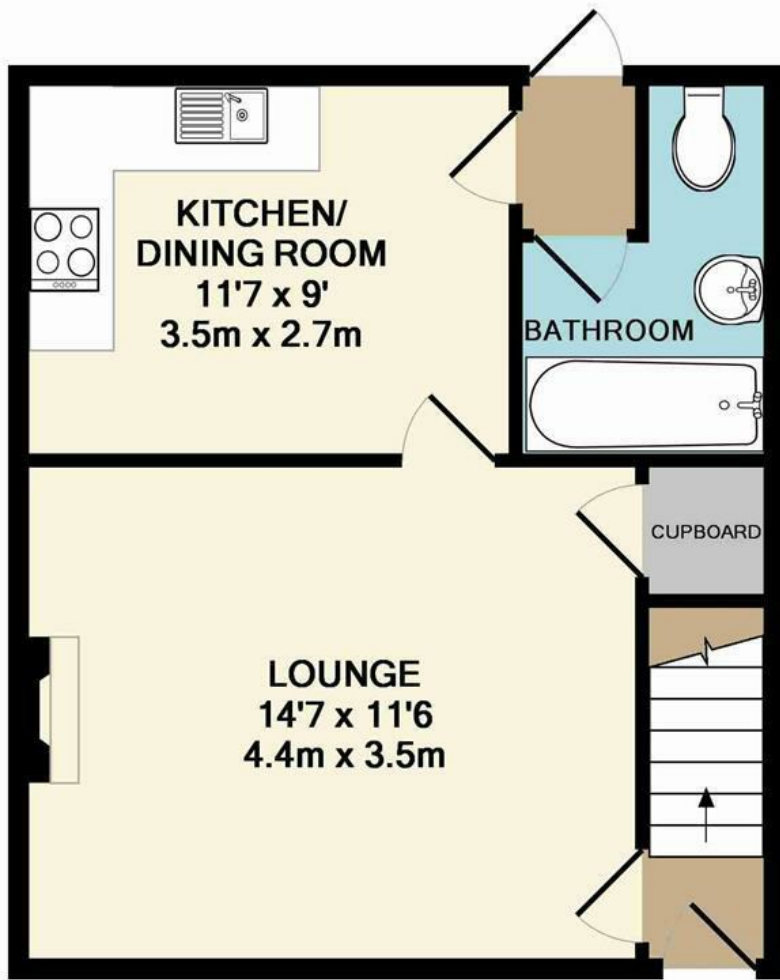




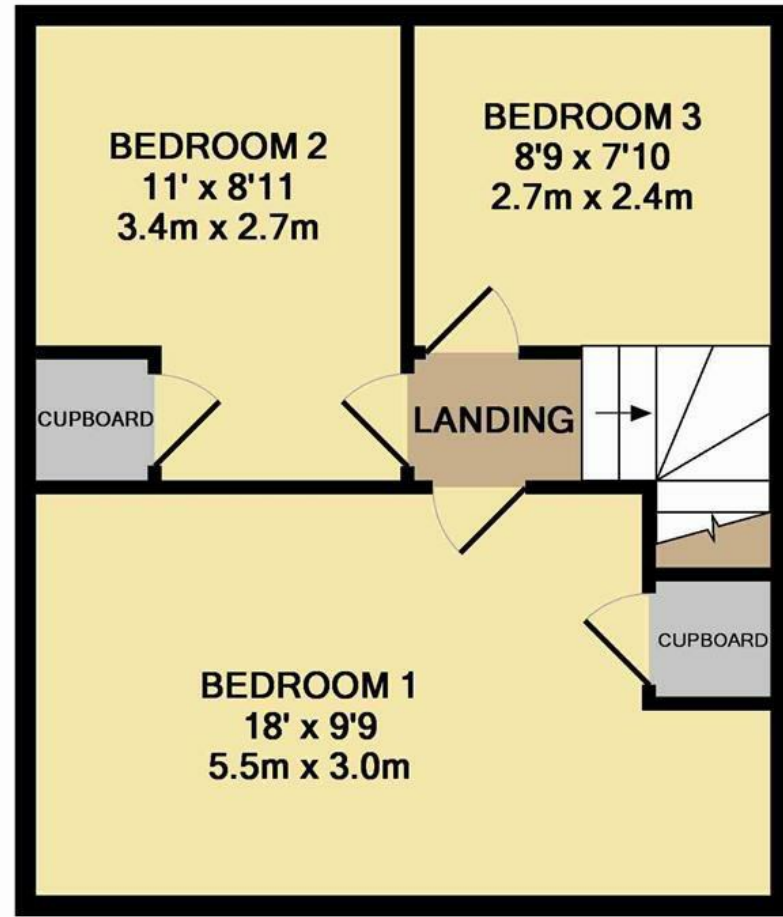


THE HIGHLIGHTS _____

- Mid terraced house
- Three bedrooms
- New boiler with 5-year Guarantee
- Kitchen diner
- Off road parking
- Enclosed rear garden
- Easy access to local amenities
- Ideal first time buy
- No onward chain
- Viewing advised



GROUND FLOOR



1ST FLOOR

Whilst every attempt has been made to ensure the accuracy of the floor plan contained here, measurements of doors, windows, rooms and any other items are approximate and no responsibility is taken for any error, omission, or mis-statement. This plan is for illustrative purposes only and should be used as such by any prospective purchaser. The services, systems and appliances shown have not been tested and no guarantee as to their operability or efficiency can be given

Made with Metropix ©2015

EPC RATING -

Disclaimer – In accordance with the Property Misdescriptions Act, the company abbotFox gives notice that all descriptions, references to condition, necessary permissions for use and other details are given in good faith and believed to be correct, but any purchaser should not rely on them as statements of fact, and must satisfy themselves by inspection or other means, as to their accuracy.

Let's talk

01603 660000

sales@abbotfox.co.uk

@abbotfox