



## 29 Mariners Close

Gorleston, Great Yarmouth, NR31 6TU

£850 PCM



Aldreds Lettings are delighted to offer this superbly presented, newly re-decorated and re-carpeted two double bedroom house situated in this sought after residential location close to local shops, schools and within walking distance of the James Paget Hospital. The accommodation comprises of an entrance hall, large living room, kitchen dining room, sun room, two double bedrooms, bathroom with shower over the bath, private garden, residents parking, gas central heating, double glazing, Energy Rating C, Council Tax Band B, UNFURNISHED



### Entrance Hall

Part glazed front door to entrance hall. Storage cupboard, stairs to first floor, radiator.

### Living Room

Large living room with big front aspect window, built in storage cupboard, TV point, radiator.

### Kitchen Dining Room

Spacious kitchen dining room with ample storage and work surface. Space and plumbing for appliances, dining area, door to garden.

### Sun Room

Useful additional living space, door to garden.

### Bedroom 1

Double bedroom, front aspect window, built in storage cupboard, radiator.

### Bedroom 2

Second double bedroom, rear aspect window overlooking the garden. Radiator.

### Bathroom

Bathroom suite comprising bath with electric shower over, wash basin. Frosted window, radiator.

### Separate WC

White suite comprising WC. Frosted window.

### Garden

Fully enclosed rear garden mainly laid to lawn, patio area, brick built shed. Open plan front garden mainly laid to lawn.

### Parking

Residents parking. Unrestricted on street parking.

### Additional Information

#### RENT

Rent is exclusive of Council Tax, water rates, sewerage rates. The rent is payable monthly in advance.

#### TENANCY

6 Months Assured Shorthold.

#### TERMS

NO SMOKING

#### ADDITIONAL INFO

All applications for tenancy to be on a form which can be obtained from this office. A non-refundable holding deposit equivalent to one week's rent will be required. This will be transferred towards the first month's rent on commencement of the tenancy. The rent is payable monthly in advance and a Dilapidations deposit equivalent to 5 weeks' rent will also be required when agreements are signed. The Dilapidations Deposit is returnable after completion of a satisfactory tenancy. The aforementioned charges would be payable by bankers draft, a cheque drawn on a Building Society account, cash or Debit Card. NOT A PERSONAL CHEQUE.

#### Disclaimer

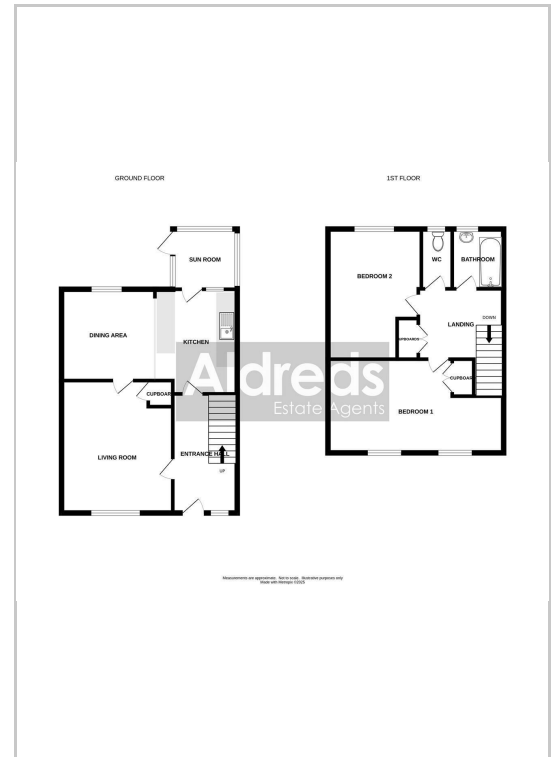
These particulars are issued on an understanding that all negotiations shall be conducted through Messrs. Aldreds. Please note: Messrs. Aldreds for themselves and for the vendors or lessors of this property whose agents they are given notice that: 1. Particulars are set out as a general outline only for guidance of intending purchasers or lessees, and do not constitute nor constitute part of, an offer or contract. 2. All descriptions, dimensions, references to condition and necessary permissions for use and occupation, and other details are given without responsibility and any intending purchasers or tenants should not rely on them as statements or representations of fact but must satisfy themselves by inspection or otherwise as to the correctness of each of them. 3. No person in the employment of Messrs. Aldreds has any authority to make or give any representation or warranty whatever in relation to this property. 4. If you are proposing to visit the property and are travelling some distance please check with Aldreds on the issue of availability prior to travelling. 5. Aldreds Property Consultants and associated services may offer additional services to the prospective purchaser for which they will be entitled to receive a commission.

Aldreds are pleased to be working with Mortgage Advice Bureau. They're an award-winning mortgage broker with over 1,400 advisers across the UK, and have access to over 12,000 mortgage products from over 90 lenders. Aldreds Estate Agents Ltd receive a commission of £200 on each completed case. Your home may be repossessed if you do not keep up repayments on your mortgage. There may be a fee for mortgage advice. The actual amount you pay will depend upon your circumstances. The fee is up to 1%, but a typical fee is 0.3% of the amount borrowed. Mortgage Advice Bureau is a trading name of Mortgage Seeker Limited which is an appointed representative of Mortgage Advice Bureau Limited and Mortgage Advice Bureau (Derby) Limited which are authorised and regulated by the Financial Conduct Authority. Mortgage Seeker Limited Registered Office: Lovewell Blake, Sixty Six North Quay, Great Yarmouth, Norfolk, NR30 1HE. Registered in England Number: 03721415. 6. Potential purchasers should check with their providers that the broadband and mobile phone coverage they would require is available.

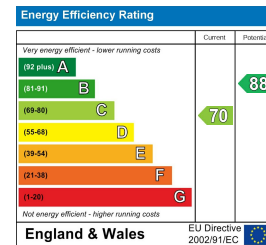
## Area Map



## Floor Plans



## Energy Efficiency Graph



17 Hall Quay, Great Yarmouth, Norfolk, NR30 1HJ  
Tel: 01493 849111 Email: [lettings@aldreds.co.uk](mailto:lettings@aldreds.co.uk) <https://www.aldreds.co.uk/>

Registered in England Reg. No. 08945751 Registered Office: 17 Hall Quay, Great Yarmouth, Norfolk NR30 1HJ Directors: Mark Duffield B.S.c. FRICS. Dan Crawley MNAEA Paul Lambert MNAEA