



**ehB**  
RESIDENTIAL

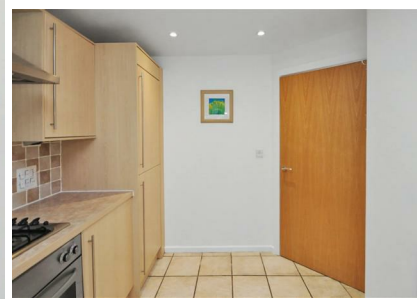
Your Property - Our Business

**4, Beech House, Leamington Spa**

**£1,350 Per  
Calendar Month**



EHB are delighted to offer this pristine two bedroom, two bathroom furnished ground floor apartment. The property is situated within a gated development which is maintained to a high standard and within walking distance of the town centre.

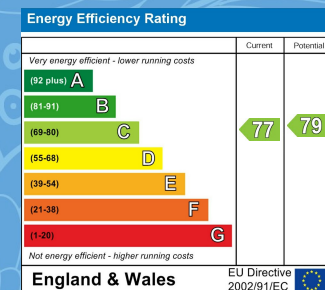


Your Property - Our Business

- Residential Estate Agents
- Lettings and Property Managers
- Land and New Homes Agents

Leamington Spa Office  
Somerset House  
Clarendon Place  
Royal Leamington Spa  
CV32 5QN

01926 881144 [ehbresidential.com](http://ehbresidential.com)



Also at: Warwick, 17-19 Jury St, Warwick CV34 4EL