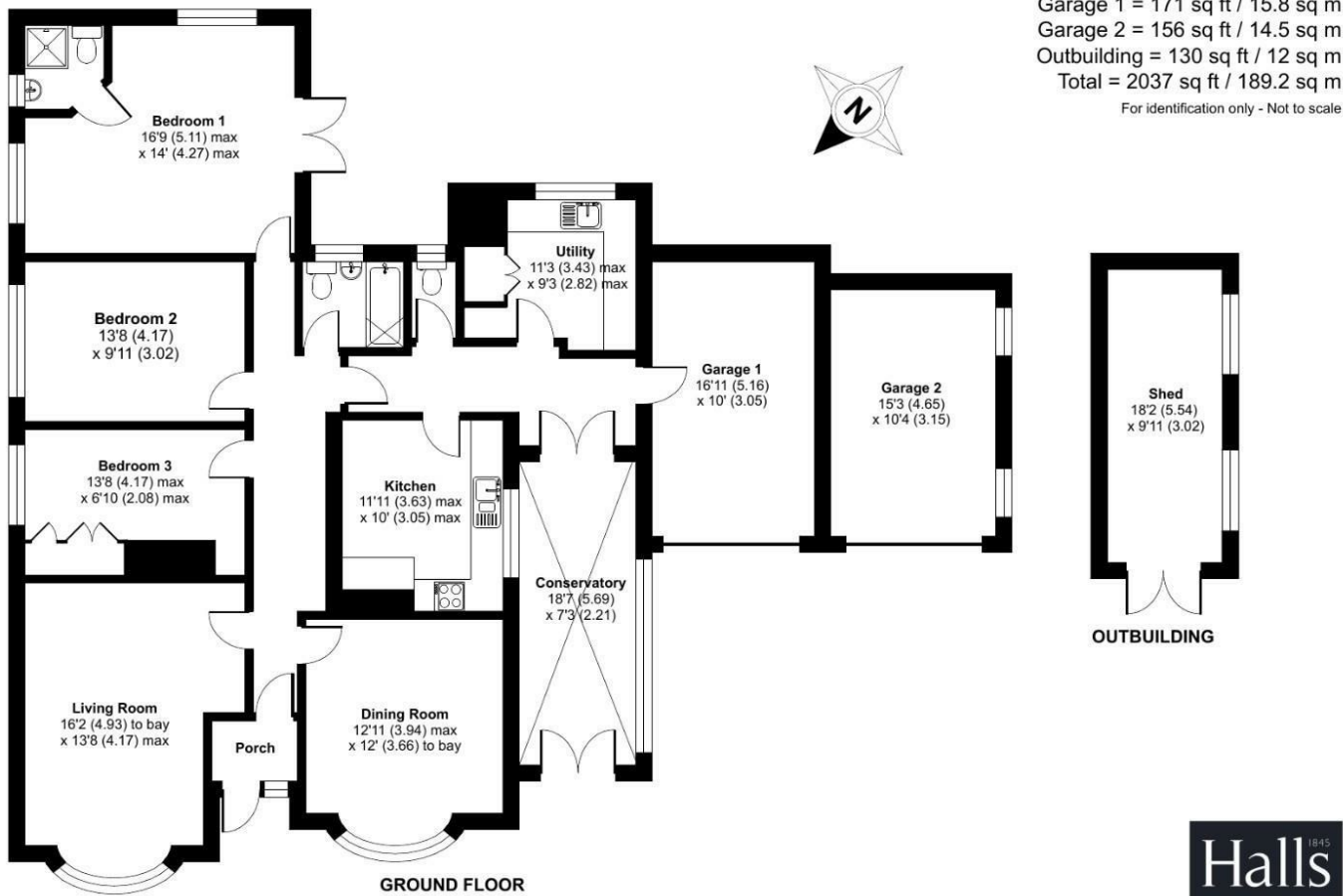


FOR SALE

Greenbank Trewern, Welshpool, SY21 8EE



Approximate Area = 1580 sq ft / 146.8 sq m
 Garage 1 = 171 sq ft / 15.8 sq m
 Garage 2 = 156 sq ft / 14.5 sq m
 Outbuilding = 130 sq ft / 12 sq m
 Total = 2037 sq ft / 189.2 sq m
 For identification only - Not to scale



FOR SALE

Offers in the region of £350,000

Greenbank Trewern, Welshpool, SY21 8EE

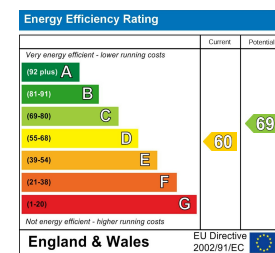
Floor plan produced in accordance with RICS Property Measurement 2nd Edition, incorporating International Property Measurement Standards (IPMS2 Residential). © nchecom 2026. Produced for Halls. REF: 1436150



Property to sell? We would be delighted to provide you with a free no obligation market assessment of your existing property. Please contact your local Halls office to make an appointment. **Mortgage/financial advice.** We are able to recommend a completely independent financial advisor,

who is authorised and regulated by the FCA. Details can be provided upon request. **Do you require a surveyor?** We are able to recommend a completely independent chartered surveyor. Details can be provided upon request.

Energy Performance Rating



01938 555552

Welshpool Sales
 14 Broad Street, Welshpool, Powys, SY21 7SD
 E: welshpool@hallsgb.com



No Onward Chain. This spacious three bedroom bungalow is situated in a large plot with lovely rural views. Situated in Trewern, between Welshpool and Shrewsbury, the bungalow, requires some modernisation, and comprises entrance porch, entrance hall, lounge, dining room, kitchen, conservatory, utility, W.C., master bedroom with en suite, two further bedrooms and family bathroom. There are twin garages, well stocked borders and large lawn sheds and generous parking and turning area.



IMPORTANT NOTICE. Halls Holdings Ltd and any joint agents for themselves, and for the Vendor of the property whose Agents they are, give notice that: (i) These particulars are produced in good faith, are set out as a general guide only and do not constitute any part of a contract (ii) No person in the employment of or consultant to Halls Holdings has any authority to make or give any representation or warranty whatsoever in relation to this property (iii) Measurements, areas and distances are approximate, Floor plans and photographs are for guidance purposes only (photographs are taken with a wide angled / zoom lenses) and dimensions shapes and precise locations may differ (iv) It must not be assumed that the property has all the required planning or building regulation consents. Halls Holdings, Bowmen Way, Shrewsbury, Shropshire SY4 3DR. Registered in England 06597073.



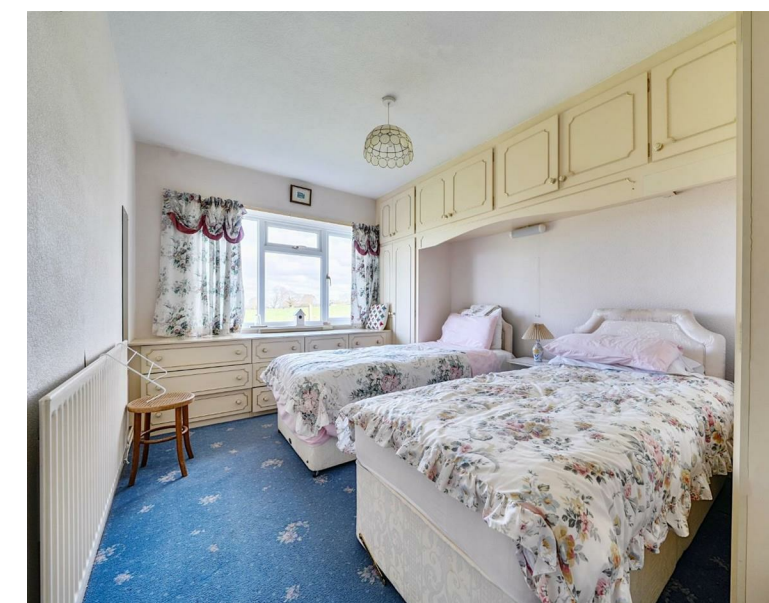
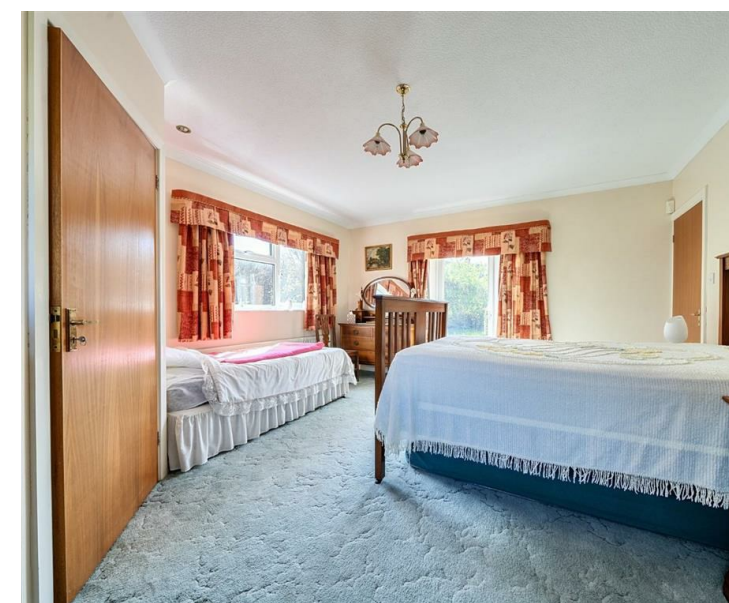
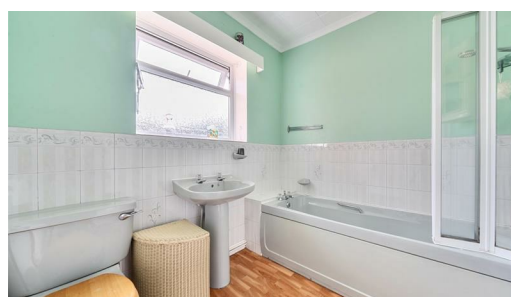
2 Reception Room/s



3 Bedroom/s



2 Bath/Shower Room/s



- Spacious three-bedroom bungalow set in a large plot with attractive rural views
- Located in Trewern, conveniently positioned between Welshpool and Shrewsbury
- Offers excellent potential for modernisation to suit your taste
- Generous living accommodation including lounge, dining room, conservatory, and en-suite master bedroom
- Extensive outdoor space with twin garages, large lawn, well-stocked borders, sheds, and ample parking with turning area
- No onward chain

Situation

Nestled within an enviable rural setting, this beautifully positioned detached bungalow enjoys a generous plot embraced by open farmland and sweeping countryside vistas. Offering both privacy and tranquillity, the property captures the essence of refined country living, where uninterrupted views stretch gracefully along the valley.

Perfectly balancing seclusion with convenience, the home lies just ten minutes from Welshpool and within easy reach of the historic market town of Shrewsbury, ensuring a wealth of amenities, boutique shopping, and dining experiences are close at hand.

The surrounding landscape provides an idyllic backdrop for a relaxed lifestyle, while practical connections remain effortlessly accessible. A local bus route is conveniently located at the top of the road, and a well-regarded primary school can be found nearby in the charming village of Trewern.

This is a rare opportunity to acquire a home that combines space, setting, and connectivity in one of the region's most picturesque countryside locations.

Accommodation

The property offers an impressive sense of space throughout, with thoughtfully arranged accommodation that flows effortlessly from room to room.

A welcoming entrance porch opens into a central hallway, setting the tone for the home's inviting and well-proportioned interiors. The generous principal lounge is bathed in natural light, enhanced by an elegant bay window to the front and an additional side aspect. A charming period fireplace with decorative surround forms a delightful focal point, creating a warm and characterful living space.

The dining room, accessible from both the entrance hall and the conservatory, is equally appealing. A front-facing bay window frames views across the gardens, while a traditional open fire with tiled surround adds a touch of classic country charm—perfect for both intimate dinners and entertaining guests.

The kitchen is fitted with a range of units and enjoys a pleasant outlook into the conservatory, beautifully connecting the interior with the surrounding landscape and allowing light to flow freely between spaces.

To the rear, a highly practical utility room provides additional storage and functionality, complete with a large shelved airing cupboard and a separate W.C.

Positioned to the side of the property, the conservatory offers rural views and light-filled retreat—an ideal place to sit, unwind, and fully appreciate the picturesque setting throughout the seasons.

Externally

The property is approached via an attractive gated entrance, leading to a sweeping tarmac driveway that opens into a spacious parking and turning area. Here, twin garages and an entrance canopy provide both practicality and a welcoming first impression.

The grounds are a particular feature of the home, thoughtfully arranged to complement the surrounding countryside. A further gated access leads to a lower lawn, while well-stocked borders line the driveway, offering colour and seasonal interest throughout the year. A garden shed with adjoining lean-to potting area provides excellent space for gardening enthusiasts.

To the side of the property, a dedicated vegetable growing area presents an opportunity for a self-sufficient lifestyle, while the lawn continues to wrap gracefully around to the rear. A paved patio area offers the perfect setting for morning coffee or outdoor dining, alongside a useful hardstanding area and discreetly positioned oil tank.

Altogether, the outdoor space provides a harmonious blend of practicality and rural charm, ideal for both relaxation and cultivation.

Directions

Postcode for the property is SY21 8EE

What3Words Reference is retraced.radiates.burying

Services

Mains electricity, water, private drainage and oil central heating are connected at the property. None of these services have been tested by Halls.

Local Authority/Tax Band

Powys County Council, Ty Maldwyn, Brook Street, Welshpool, SY21 7PH. Telephone: 01938 553001
The property is in band 'G'

Viewings

Strictly by appointment only with the selling agents: Halls, 14 Broad Street, Welshpool, Powys, SY21 7SD.

Websites

Please note all of our properties can be viewed on the following websites:
www.hallsgb.com
www.rightmove.co.uk
www.onthemarket.com

Anti Money Laundering Checks

We are legally obligated to undertake anti-money laundering checks on all property purchasers. Whilst we are responsible for ensuring that these checks, and any ongoing monitoring, are conducted properly; the initial checks will be handled on our behalf by a specialist company, Movebutler, who will reach out to you once your offer has been accepted.

The charge for these checks is £30 (including VAT) per purchaser, which covers the necessary data collection and any manual checks or monitoring that may be required. This cost must be paid in advance, directly to Movebutler, before a memorandum of sale can be issued, and is non-refundable. We thank you for your cooperation.