



Connells

Wallis Place
Hart Street Maidstone



Property Description

Charming Riverside Retreat: Stylish One-Bedroom Apartment in Maidstone

Tucked away on the peaceful outskirts of Maidstone, this beautifully presented one-bedroom apartment offers the perfect balance of modern comfort and riverside tranquillity. Set within a secure gated development, the property enjoys stunning views over the landscaped communal gardens that gently slope down to the River Medway—an ideal setting for those seeking a serene lifestyle with easy access to town amenities.

Step inside to discover a bright and airy living space, where large windows flood the room with natural light and frame picturesque garden views.

The contemporary kitchen is fitted with sleek cabinetry and integrated appliances, making it both stylish and practical. The spacious double bedroom offers a peaceful retreat, complete with built-in storage and calming views. A modern bathroom with high-quality fixtures completes the interior.

Outside, residents can enjoy the beautifully maintained communal gardens and riverside walks, while being just a short stroll from Maidstone town centre, Lockmeadow Entertainment Centre, and excellent transport links.



Entrance Hall

Lounge

13' 4" Max x 10' 3" (4.06m Max x 3.12m)

Kitchen

8' 11" x 6' 7" Max (2.72m x 2.01m Max)

Bedroom

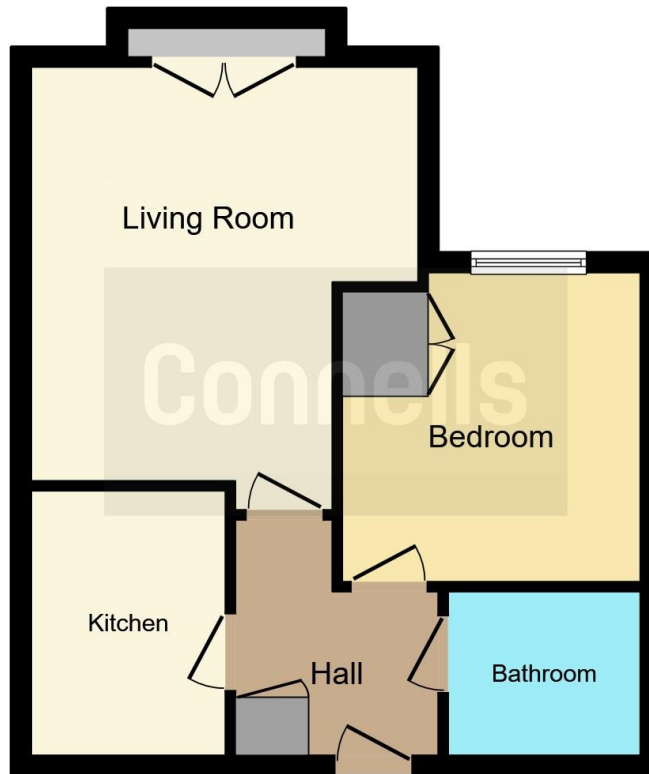
10' 6" x 9' 6" Max (3.20m x 2.90m Max)

Bathroom

Parking







This floor plan is for illustrative purposes only. It is not drawn to scale. Any measurements, floor areas (including any total floor area), openings and orientation are approximate. No details are guaranteed, they cannot be relied upon for any purpose and they do not form part of any agreement. No liability is taken for any error, omission or misstatement. A party must rely upon its own inspection(s). Powered by www.focalagent.com

To view this property please contact Connells on

T 01622 751034
E maidstone@connells.co.uk

30 King Street
MAIDSTONE ME14 1BS

EPC Rating: C Council Tax
Band: C

Service Charge:
1698.00

Ground Rent:
175.00

Tenure: Leasehold

view this property online connells.co.uk/Property/MAI408056

This is a Leasehold property with details as follows; Term of Lease 999 years from 01 Jan 2006. Should you require further information please contact the branch. Please Note additional fees could be incurred for items such as

1. MONEY LAUNDERING REGULATIONS Intending purchasers will be asked to produce identification documentation at a later stage and we would ask for your co-operation in order that there will be no delay in agreeing the sale. 2. These particulars do not constitute part or all of an offer or contract. 3. The measurements indicated are supplied for guidance only and as such must be considered incorrect. Potential buyers are advised to recheck measurements before committing to any expense. 4. We have not tested any apparatus, equipment, fixtures, fittings or services and it is in the buyers interest to check the working condition of any appliances.

Connells Residential is registered in England and Wales under company number 1489613, Registered Office is Cumbria House, 16-20 Hockliffe Street, Leighton Buzzard, Bedfordshire, LU7 1GN. VAT Registration Number is 500 2481 05.



See all our properties at www.connells.co.uk | www.rightmove.co.uk | www.zoopla.co.uk

Property Ref: MAI408056 - 0014