

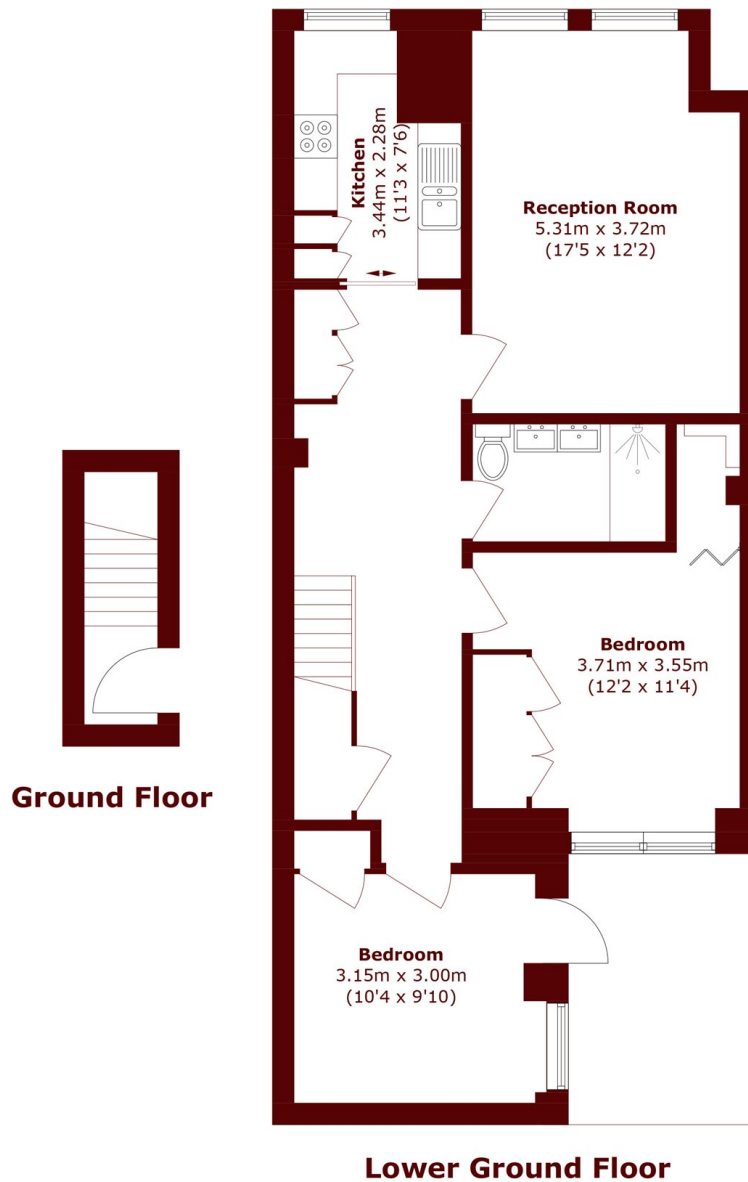


Gledhow Gardens, SW5

£950,000



- Two Double Bedrooms
- Recently Refurbished
- Communal Gardens
- Share of Freehold
- Separate Kitchen
- Wood Flooring Throughout



Total area (approx.): 81.4 sq. m (876.1 sq. ft)

Marsh & Parsons South Kensington

29 Harrington Road, London,
SW7 3HD
020 7590 0800