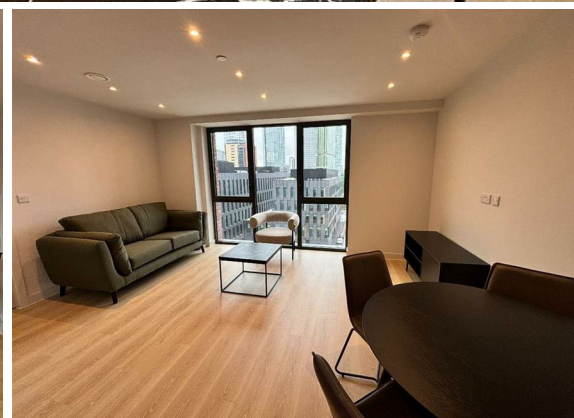




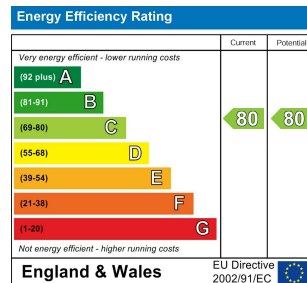
2 Bed  
Apartment  
located in 1 Dutton  
Street

£1,700 PCM



 **NPP**  
RESIDENTIAL

EPC Rating: C  
Council Tax Band: E



## DIRECTIONS

## CONTACT

22 Lloyd Street  
Manchester  
M2 5WA

E: [info@nppresidential.co.uk](mailto:info@nppresidential.co.uk)  
T: 0161 639 0059  
<https://nppresidential.co.uk/>

