



## Hornchurch Road, Uxbridge, UB10 0YH

- Underfloor heating
- EPC Rating - B
- Ideal for a single / couple
- Walking distance to Uxbridge
- Allocated parking
- Ground floor apartment
- Highly popular development
- Unfurnished

**£1,395 PCM**



Cameron Estate Agents  
195 High Street,  
Middlesex, Uxbridge, UB8 1LB

E: [uxbridge@cameron.co](mailto:uxbridge@cameron.co)  
T: 01895252000

[www.cameron.co](http://www.cameron.co)

Whilst every care has been taken to ensure the accuracy of these particulars, none of the statements contained herein are to be relied upon as representations of fact. These particulars do not constitute an offer or contract.

**Description**

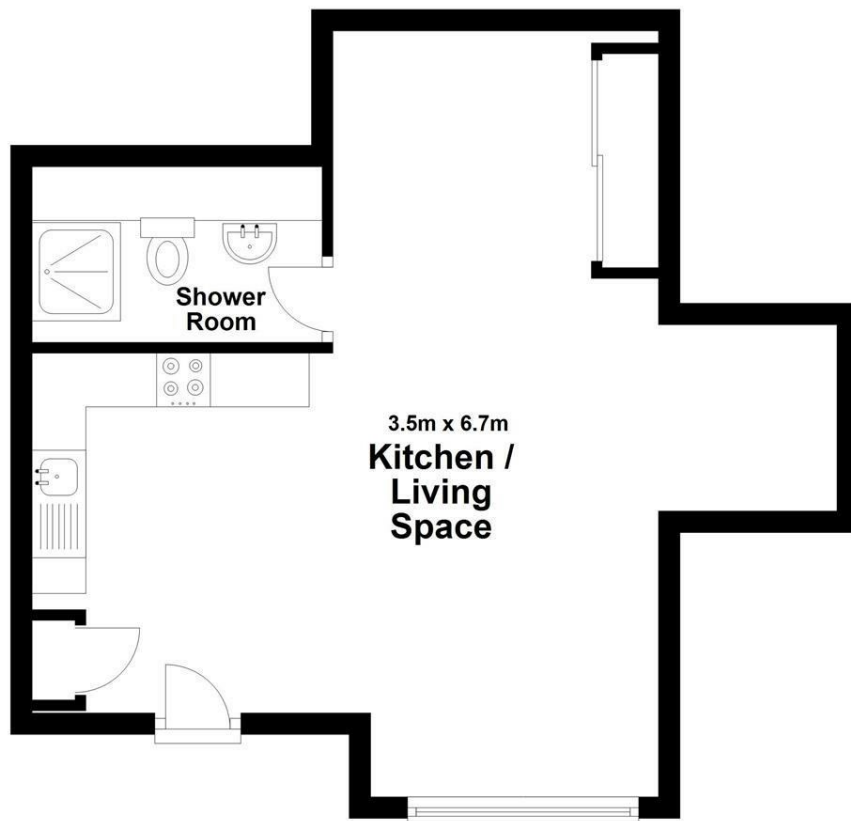
Offered to the market for the first time, this ground floor, newly built, studio apartment in St Andrew's Park, Uxbridge. The apartment is built to a high specification with a modern spacious feel and underfloor heating. This well presented property also offers a built-in wardrobe, integrated kitchen and shower-room. Presented to the market furnished or unfurnished and includes one parking space. Available Mid-March 2026 and located just minutes from Uxbridge town offer a range of shops, restaurants and Uxbridge Underground Station.

**IMPORTANT NOTICE**

These particulars have been prepared upon information supplied by the Vendor and should be verified by your surveyors and solicitors. In accordance with the Property Misdescriptions Act 1991 we have prepared these sales particulars as a general guide to give a broad description of the property. They are not intended to constitute part of an offer or contract. We have not carried out a structural survey and the services, appliances and specific fittings have not been tested. All photographs, measurements, floor plans and distances referred to are given as a guide only and should not be relied upon for the purchase of carpets or any other fixtures or fittings. Lease details service charge and ground rent (where applicable) are given as a guide only and should be checked and confirmed by your solicitor prior to exchange of contract

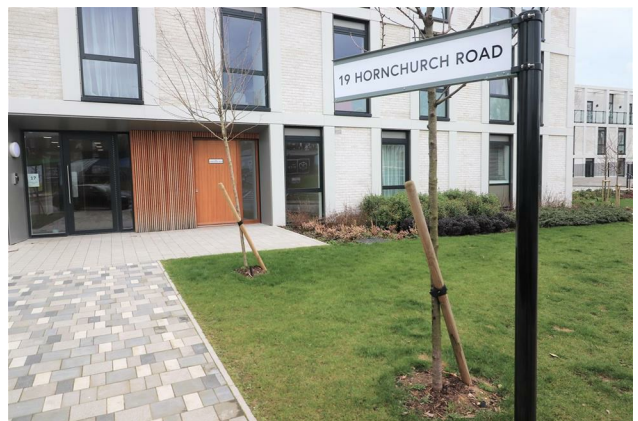
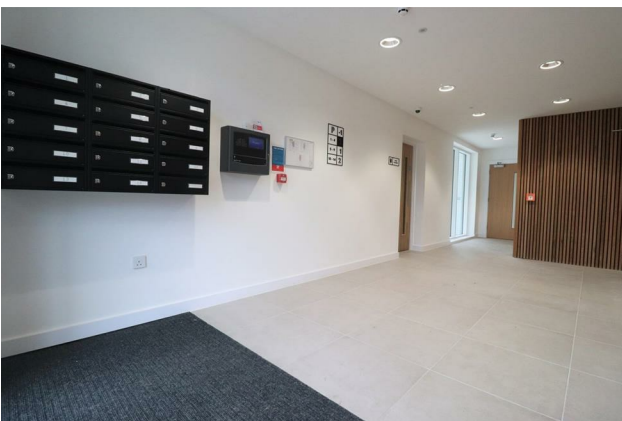
## Ground Floor

Approx. 35.2 sq. metres (378.6 sq. feet)



Total area: approx. 35.2 sq. metres (378.6 sq. feet)

# Cameron



Whilst every care has been taken to ensure the accuracy of these particulars, none of the statements contained herein are to be relied upon as representations of fact. These particulars do not constitute an offer or contract.