



## Chelsea Manor Street, SW3

### £850,000

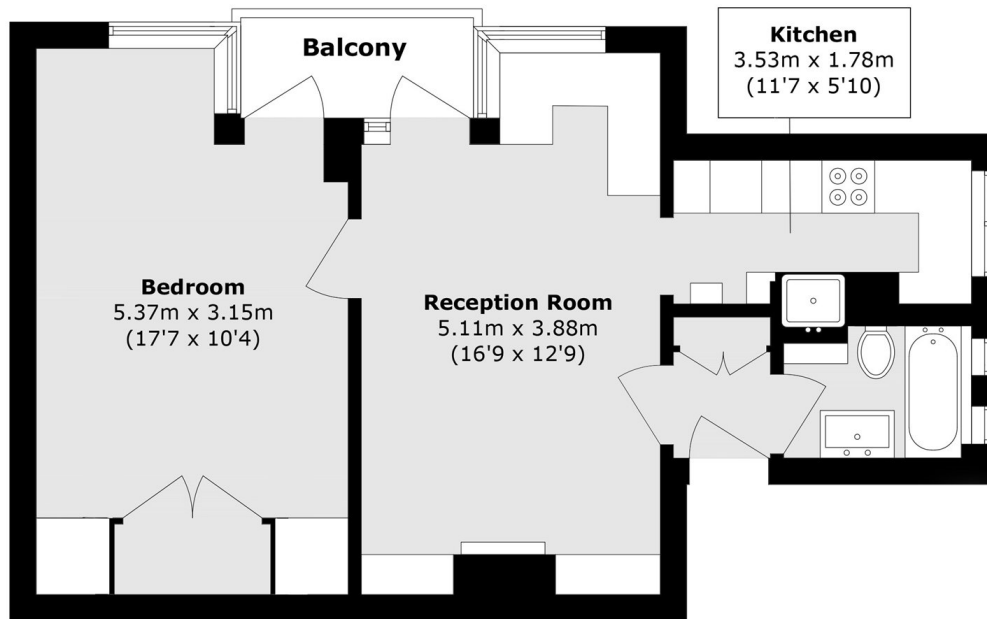
A beautifully finished apartment set within an iconic Art Deco building in Chelsea. Set on the first floor with its own balcony, flooded with light, this property would be an ideal home, pied à terre or rental investment.

Chesil Court is a popular, portered, Art Deco building located on Chelsea Manor Street. The King's Road, Duke of York Square and Burton Court are all within walking distance.

### Features

- Porters
- Popular Location
- Balcony
- Bespoke Finish
- One Bedroom
- Lift

# Chelsea Manor Street, London, SW3



## First Floor

Total area (approx.): 52.2 sq. m (561.8 sq. ft)

Balcony area (approx.): 3.6 sq. m (38.7 sq. ft)