



Coachworks Mews, NW2

£6,750 Per calendar month

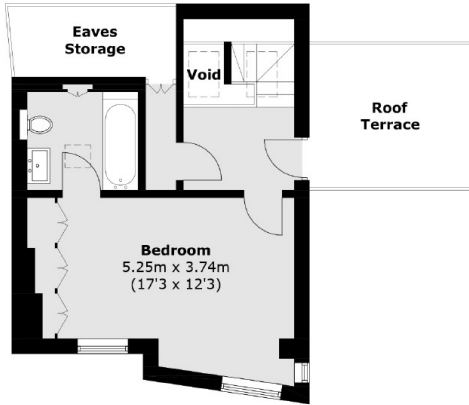
This modern four-story, three/four bedroom family home is part of a set of three newly constructed houses. It is discreetly positioned within a gated mews off Pattison Road, situated on the lower western slopes of Hampstead. The property has been meticulously built and finished to high standards.

Coachwork Mews is conveniently located just a short walk from Finchley Road with its multiple shopping and transport facilities, within close proximity of Hampstead Village and within a short stroll to the west side of Hampstead Heath and Golders Hill Park.

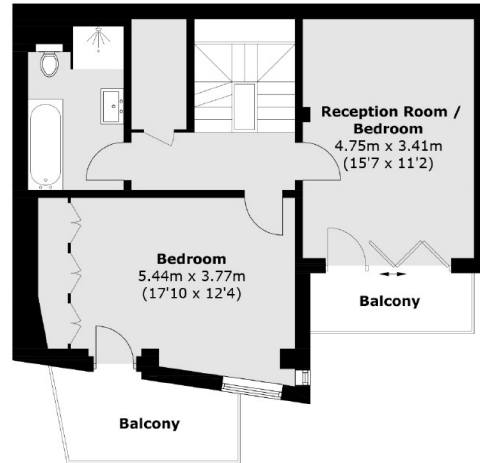
Features

- Four Bedrooms
- Three Bathrooms
- Reception Room
- Luxurious Kitchen
- Extensive Storage
- Allocated Parking Space

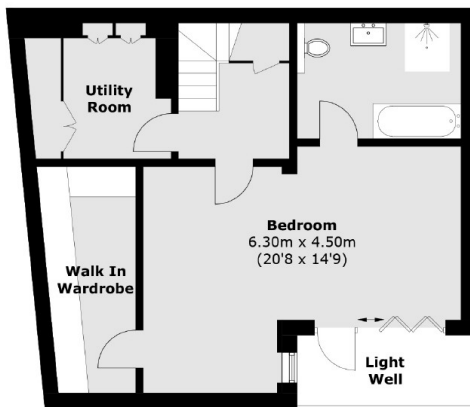
Coachworks Mews, London, NW2



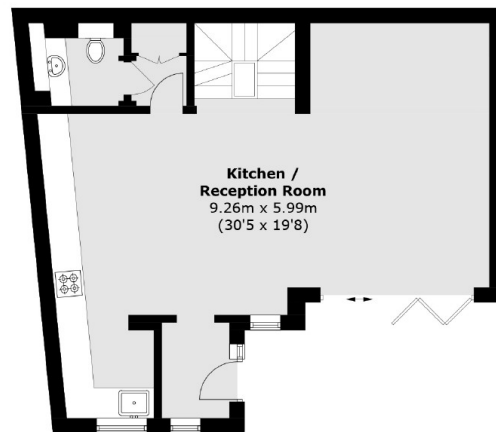
Second Floor



First Floor



Lower Ground Floor



Ground Floor

Total area (approx.): 198.7 sq. m (2,138.8 sq. ft)
Balcony / Roof Terrace area (approx.): 18.4 sq. m (198.0 sq. ft)
(Excluding Eaves Storage)