



Berrymead Gardens, W3

£375,000

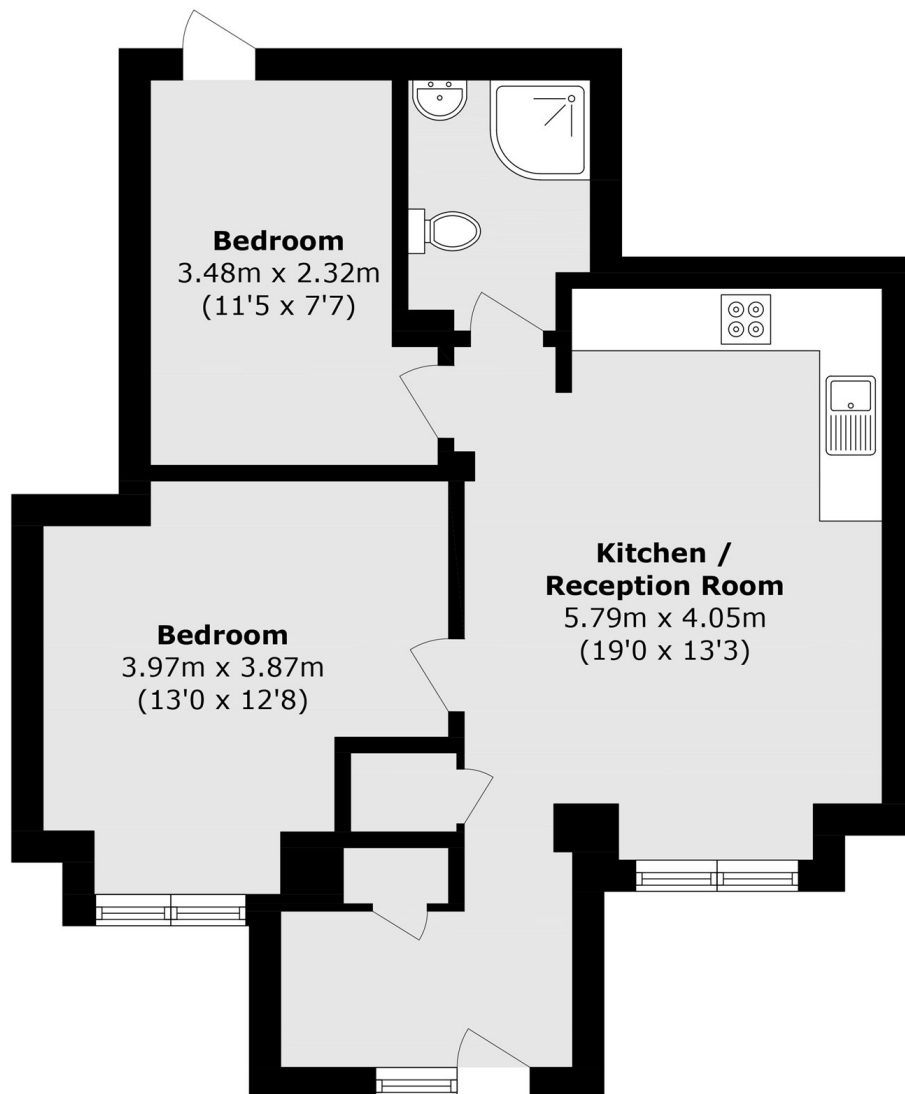
A newly converted two-bedroom ground-floor apartment in immaculate condition, featuring a private entrance and access to a low-maintenance terrace. The property benefits from abundant natural light and will be sold with a new lease and no onward chain.

Half a mile from Acton Central and South Acton stations (Overground) and under three quarters of a mile from Acton Town tube station (District and Picadilly lines).

Features

- Two Double Bedroom
- Private Entrance
- Long Lease
- Newly Converted
- Terrace
- No Onwards Chain

Berrymead Gardens, London, W3



Total area (approx.): 55.9 sq. m (601.7 sq. ft)