

Dover Branch:  
T: 01304 206666

Deal Branch:  
T: 01304 365454

Folkestone Branch:  
T: 01303 210777



Herne Bay Branch:  
T: 01227 360226

Thanet Branch:  
T: 01843 210111

Out of hours:  
T: 07970 059561

# Asking price of £379,950

## Redstart Hill, Whitfield, CT16



- Attractive Family Home
- Four Bedrooms
- Generous Living Room
- Stylish Kitchen/Dining Room
- Ground Floor Cloakroom
- Master Bedroom with En Suite Shower Room
- Modern Family Bathroom
- Enclosed Rear Garden
- Off Road Parking

Set within a sought after area in the village of Whitfield, this attractive four bedroom property would make the perfect home for a growing family or those looking to upsize. As you enter the property, you are greeted into a bright living room with plenty of space to relax. To the rear, there is a stylish kitchen/dining room which has a range of matching wall and base units, integrated appliances, a central island which makes the perfect breakfast bar and plenty of room for a large dining table with French double doors providing direct access to the rear garden. Furthermore, there is a ground floor cloakroom. To the first floor, there are four well-proportioned bedrooms, the master bedroom enjoys a sleek, en suite shower room whilst the other bedrooms have use of

a modern family bathroom. Externally, the property boasts a well-kept, enclosed garden with a paved seating area and pergola which is ideal for alfresco dining in the summer months. To the front, there is a driveway providing ample off road parking. Positioned within a desirable residential area, the property enjoys easy access to local amenities such as Dover Leisure Centre, Tesco Extra and Whitfield Aspen School. There are excellent transport links including nearby Stagecoach bus routes, easy access to the Whitfield Bypass, A2, and A20 to Canterbury, Folkestone, and beyond and Dover Priory Mainline railway station provides services to nearby coastal towns and the high-speed service to London St Pancras. Dover Town Centre has a variety of local shops, supermarkets and services and the seafront & world famous port are within easy reach, along with the popular St James retail and leisure complex.

# Redstart Hill, Whitfield, CT16

-  
-  
-





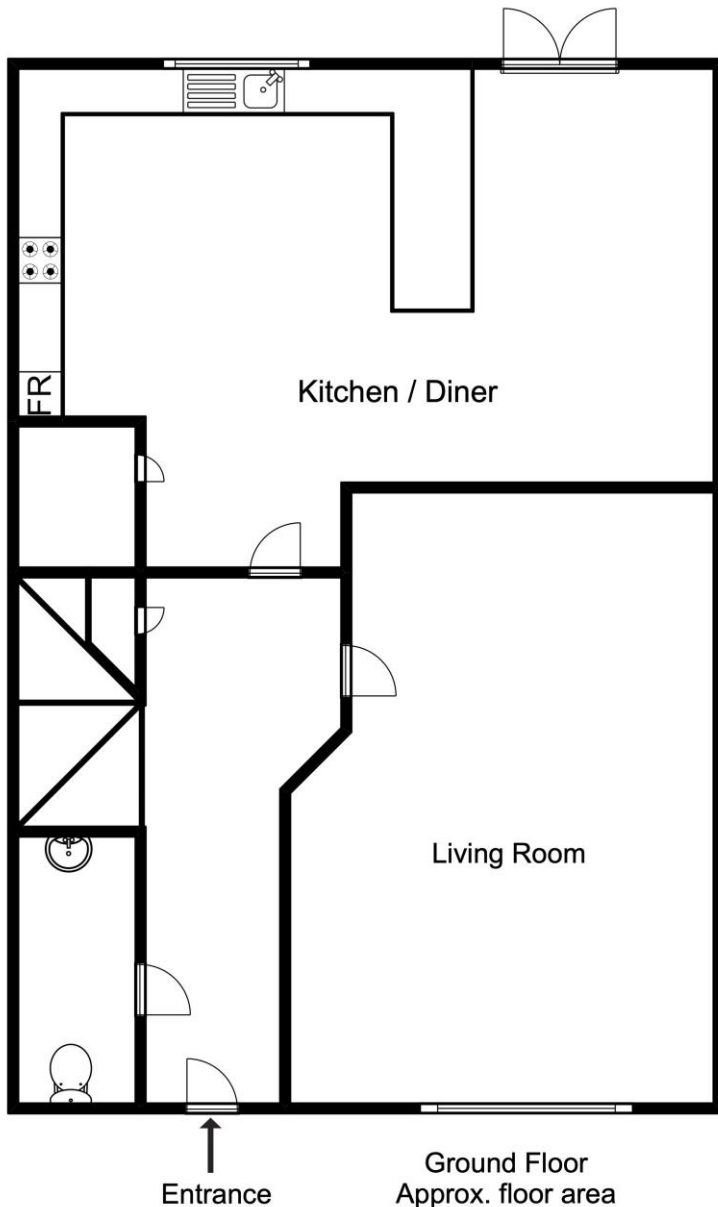
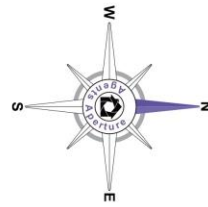






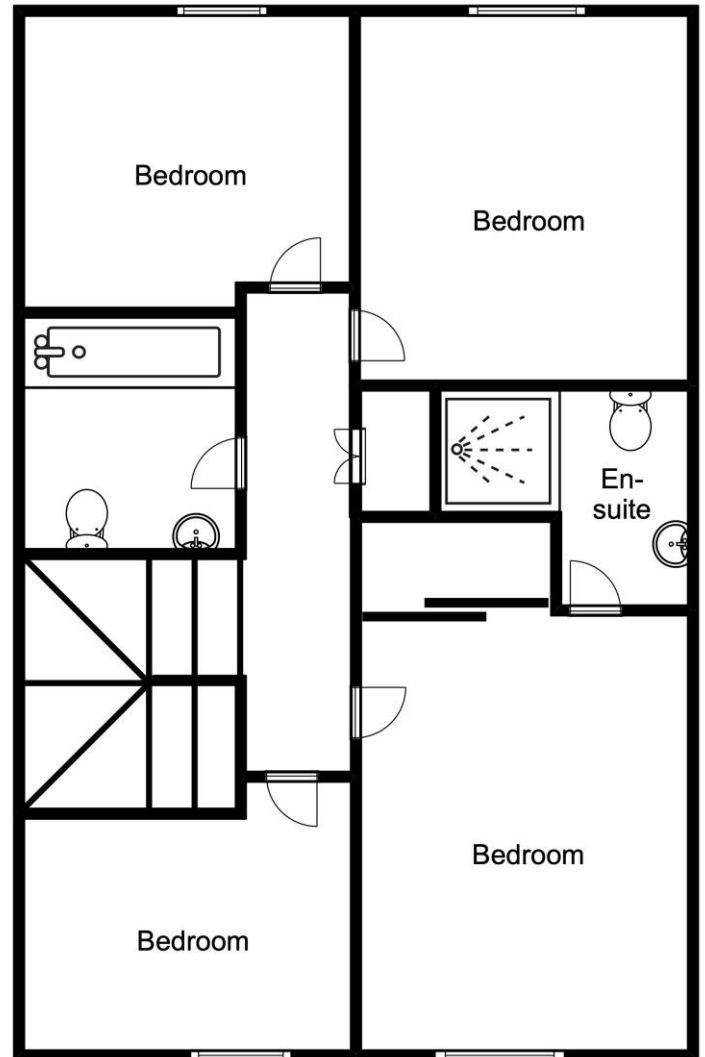


Approx. total  
floor area  
992 SQ.FT.  
92.20 SQ.M.



Entrance

Ground Floor  
Approx. floor area  
496 SQ.FT.  
46.10 SQ.M.



First Floor  
Approx. floor area  
496 SQ.FT.  
46.10 SQ.M.

#### Disclaimer

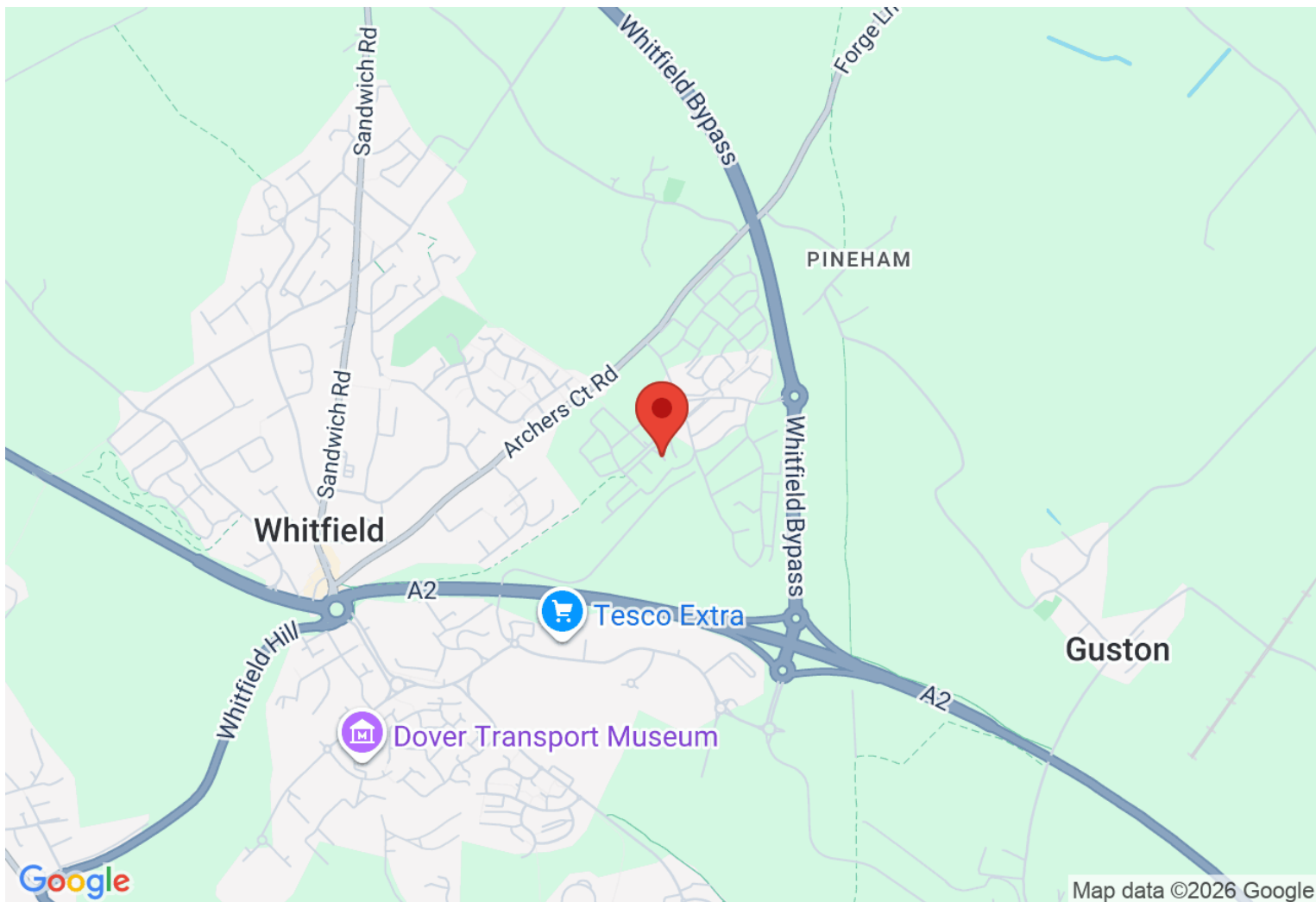
This plan is for illustrative purposes only and no responsibility is taken for any error, omission or misstatement. The appliances shown have not been tested and no guarantee as to their operability or efficiency can be given. Measurements have been added as a guide to prospective buyers only, are not precise, not to scale, may have been taken from the widest area and may include wardrobe / cupboard space. Garages and outbuildings may not be represented in their actual location in relation to the property. Compass point, measurements and total areas should be considered inaccurate and checked as no guarantee is given to their accuracy. Buyers are strongly advised to take their own measurements and compass bearing.



**Agents Aperture**  
agentsaperture.co.uk

**Directions**

**Location**



**VIEWING BY APPOINTMENT WITH AGENTS THOMAS AND PARTNERS**

10 Victoria Rd, Deal, Kent, CT14 7AP T: 01304 365454 E: [enquiries@tapestates.com](mailto:enquiries@tapestates.com) W: [www.tapestates.com](http://www.tapestates.com)

General: While we endeavour to make our sales particulars fair, accurate and reliable, they are only a general guide to the property and, accordingly, if there is any point which is of particular importance to you, please contact the office and we will be pleased to check the position for you, especially if you are contemplating travelling some distance to view the property.

Measurements: These approximate room sizes are only intended as general guidance. You must verify the dimensions carefully before ordering carpets or any built-in furniture.

Services: Please note we have not tested the services or any of the equipment or appliances in this property, accordingly we strongly advise prospective buyers to commission their own survey or service reports before finalizing their offer to purchase.

THESE PARTICULARS ARE ISSUED IN GOOD FAITH BUT DO NOT CONSTITUTE REPRESENTATIONS OF FACT OR FORM PART OF ANY OFFER OR CONTRACT. THE MATTERS REFERRED TO IN THESE PARTICULARS SHOULD BE INDEPENDENTLY VERIFIED BY PROSPECTIVE BUYERS OR TENANTS. NEITHER THOMAS AND PARTNERS NOR ANY OF ITS EMPLOYEES OR AGENTS HAS ANY AUTHORITY TO MAKE OR GIVE ANY REPRESENTATION OR WARRANTY WHATEVER IN RELATION TO THIS PROPERTY.

YOUR HOME IS AT RISK IF YOU DO NOT KEEP UP REPAYMENTS ON A MORTGAGE OR OTHER LOAN SECURED ON IT.

Written quotations available on request. All loans secured on property. Life assurance is usually required.