



## Belvedere Road, SE1

£575 Per week

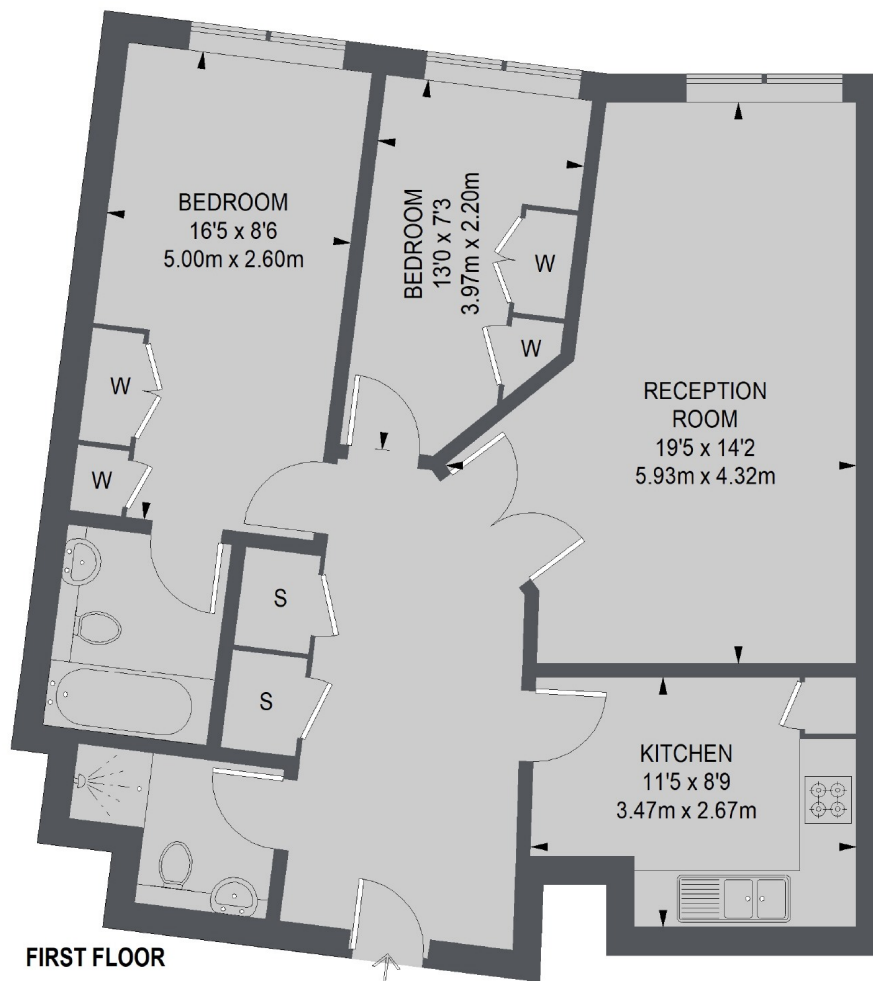
Two bedroom two bathroom apartment within the popular Whitehouse Apartments which offers 24hr concierge, indoor pool and gym facilities.

Well located on London's South Bank, close to the river Thames. Very close to Waterloo station, close by you will find the IMax Cinema, the Tate Modern and the London Eye.

### Features

Two Bedrooms  
Two Bathrooms  
Over 750 sq ft  
24hr Concierge  
Gym  
Swimming Pool

## Belvedere Road, London, SE1



TOTAL APPROX. FLOOR AREA  
776 SQ. FT. (72.08 SQ. M.)

### Contact

To arrange a viewing call our office on the number below or visit our website.



Energy Rating: . We aim to make our particulars both accurate and reliable. However they are not guaranteed; nor do they form part of an offer or contract. If you require clarification on any points then please contact us, especially if you're traveling some distance to view. Please note that appliances and heating systems have not been tested and therefore no warranties can be given as to their good working order.