

Rolfe East



Dominion Close, TW3

£1,650 Per Month

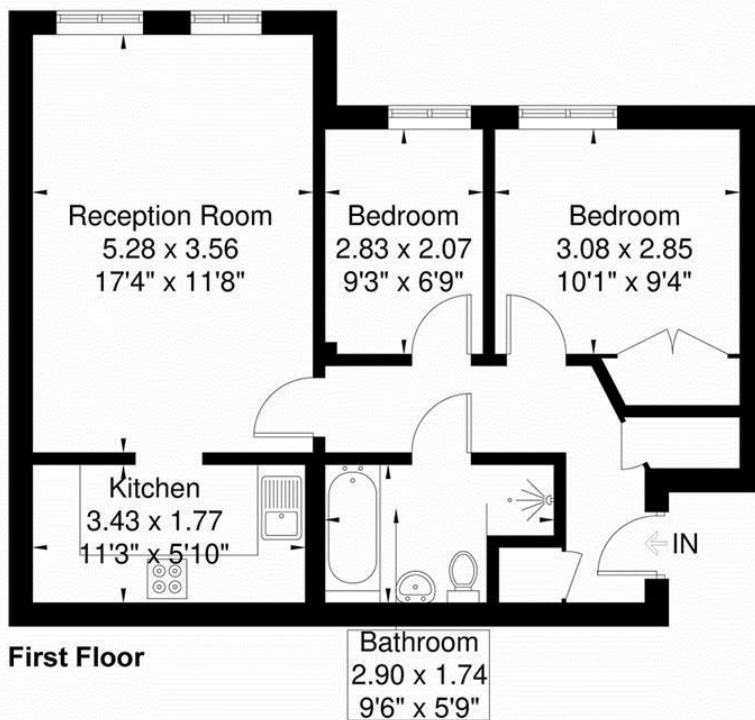
- Two bedroom flat
- Allocated gated parking
- Redecorated
- Double glazed throughout
- Ready to move into in May
- Convenient for Piccadilly line
- Unfurnished

289 Northfield Avenue, Ealing, W5 4XB
020 8579 1111

northfieldslettings@rolfe-east.com
<https://www.rolfe-east.com/>

Dominion Close

Approximate Gross Internal Area = 56.7 sq m / 610 sq ft



Although every attempt has been made to ensure accuracy, all measurements are approximate.
The floorplan is for illustrative purposes only and not to scale.
© www.perspective.co.uk

Viewings

Viewings by arrangement only.
Call 020 8579 1111 to make an appointment.

Council Tax Band

C

EPC Rating:

Energy Efficiency Rating		Current	Potential
Very energy efficient - lower running costs			
(92 plus) A			
(81-91) B			
(69-80) C			
(55-68) D			
(39-54) E			
(21-38) F			
(1-20) G			
Not energy efficient - higher running costs			
England & Wales		EU Directive 2002/91/EC	