

Elliotdale Street, Pontefract



Asking Price £149,995



2



1



1



null

Welcome to this charming townhouse located on Elliotdale Street in the delightful area of Featherstone, Pontefract. Ideal for first-time buyers. Close by is the local rail station having regular services to surrounding towns. The property boasts good size accommodation throughout.

Outside, you will find parking for one vehicle to the front and an enclosed rear garden

With its appealing features and prime location, this property is not to be missed. NO UPPER CHAIN INVOLVED



- Popular location close to excellent local amenities
- Ideal first time buyer home with no onward chain
- Entrance hall and cloakroom
- Well fitted and equipped kitchen, good size lounge with French windows
- Two double bedrooms and house bathroom
- Parking to the front, enclosed rear garden
- Close to rail and road links to surrounding cities
- Council tax Band A
- EPC Grade to follow
- Freehold

Call 01977 285 111 to view this property or visit www.crownestateagents.com

Opening hours:
Mon - Fri 9am - 5pm
Sat 10am - 2pm

Fron Elevation

A recently fitted composite front door takes you directly into the central hallway. Having a tarmac parking space directly in front of your property.

Entrance Hallway

11'11" x 3'2" (3.63m x 0.97m)

With plenty of light and doors off to the kitchen, downstairs WC and lounge with open access to staged level stairs with surrounding handrail. Smoke alarm and radiator.

Cloakroom WC

16'4"0'0" x 9'10"0'0" (5'0" x 3'0")

Having a low-level flush WC, corner wash hand basin and new vinyl flooring. Obscure double glazed window to the front.

Lounge

14'5" x 12'5" (4.39m x 3.78m)

A lovely size family living space having a traditional ornamental fire and surround and French doors off to the rear garden. Central heating radiator.

Kitchen

10'11" x 5'8" (3.33m x 1.73m)

A white electric oven and matching four-ring gas hob with range of base and wall units with laminate work surfaces and tiled surrounds. Having integrated appliances, including fridge, freezer, dishwasher and washer it has everything you need. Newly fitted vinyl on the floor, and double glazed window to the front. CH boiler (CP12 certified) housed in the wall unit, central heating radiator

First Floor Landing

With access to the loft and doors to all first floor rooms

Bedroom 1

12'4 x 9'10" (3.76m x 3.00m)

Fitted wardrobes and base units to one side, a newly fitted soft vinyl floor and double glazed window to the rear, overlooking the rear garden. Central heating radiator.

Bedroom 2

12'5" nax x 8'11" max (3.78m nax x 2.72m max)

Carpeted and two double glazed windows to the front and with useful storage cupboard off.

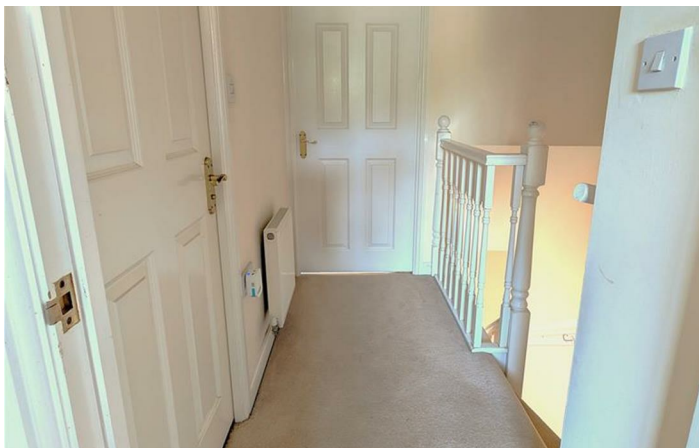
Bathroom

6'5" x 5'5" (1.96m x 1.65m)

Having a rectangular panelled bath with built-in shower, tiled surrounds and curtain rail. A low-level flush WC ,wash hand basin, heated towel rail and newly fitted vinyl flooring to compliment the suite.

Rear Garden

The garden is laid to lawn and has a fenced perimeter.



Floor Plan



TOTAL FLOOR AREA: 632 sq.ft. (58.8 sq.m.) approx.
While every attempt has been made to ensure the accuracy of the floorplan contained here, measurements of doors, windows, stairs and any other items are approximate and no responsibility is taken for any error, omission or misstatement. This plan is for illustrative purposes only and should not be used as such for any prospective purchase. The services, systems and appliances shown have not been tested and no guarantee is given as to their operability or efficiency can be given.
 Made with Blueprints 12/2018



Energy Efficiency Rating

	Current	Potential
Very energy efficient - lower running costs		
(92 plus) A		
(81-91) B		
(69-80) C		
(55-68) D		
(39-54) E		
(21-38) F		
(1-20) G		
Not energy efficient - higher running costs		

England & Wales EU Directive 2002/91/EC

Please call our Crown Estate Agents Office on 01977 600633 if you wish to arrange a viewing appointment for this property or if you require further information.

These particulars, whilst believed to be accurate are set out as a general outline only for guidance and do not constitute any part of an offer or contract. Intending purchasers should not rely on them as statements of representation of fact, but must satisfy themselves by inspection or otherwise as to their accuracy. No person in this firm's employment has the authority to make or give any representation or warranty in respect of the property.

Call 01977 285 111 to view this property or visit www.crownestateagents.com

Opening hours:
 Mon - Fri 9am - 5pm
 Sat 10am - 2pm