



**Guide Price**  
**£280,000**

**Freehold**

2x  2x  2x 

**Queens Road, Snodland,  
Kent, ME6**

**OVER 60?**

Secure this property  
for up to **59% less!**

*Wards*  
Helping you move forwards



## Main features

- **Lovely period terraced home in the centre of Snodland village**
- **With 2 bedrooms plus the handy loft room, you can use the space as you wish**
- **Upstairs en-suite bathroom plus a downstairs shower room**
- **Useful utility area**
- **Tranquil gardens to relax in**

## Accommodation

### GROUND FLOOR

Lounge: 11'1 x 10'4 (3.38m x 3.15m)  
 Dining Room: 12'1 x 9'11 (3.69m x 3.02m)  
 Kitchen: 9'10 x 6'10 (3.00m x 2.08m)  
 Utility Area: 6'4 x 4'6 (1.93m x 1.37m)  
 Shower Room

### SPLIT LEVEL FIRST FLOOR

Landing  
 Bedroom 1: 12'2 x 9'11 (3.71m x 3.02m)  
 En-Suite Bathroom  
 Bedroom 2: 12'2 x 7'1 (3.71m x 2.16m)

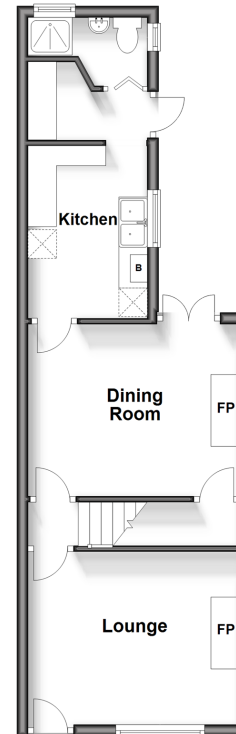
### SECOND FLOOR

Loft Room

### OUTSIDE

Front and Rear Gardens

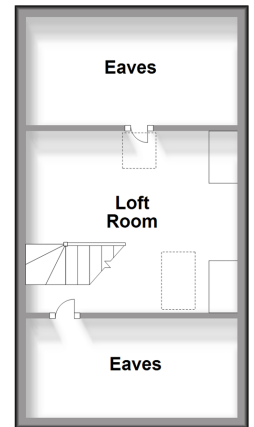
**Ground Floor**  
Approx. 399.6 sq. feet



**Split Level First Floor**  
Approx. 349.2 sq. feet



**Second Floor**  
Approx. 126.6 sq. feet



**Call Snodland - 01634 245055 ■ [wardsof Kent.co.uk](http://wardsof Kent.co.uk)**

■ Legal advice should be taken to verify fixtures/fittings, planning, alterations and/or lease details  
 ■ Through a Homewise Home For Life Plan people aged 60+ can secure this property for up to 50% less, by purchasing a Lifetime Lease.

■ Appliances & services are untested, dimensions are approximate and floor plans are not to scale



13821843/20251126/CG/LK