



## Stainton Road, SE6

£550,000

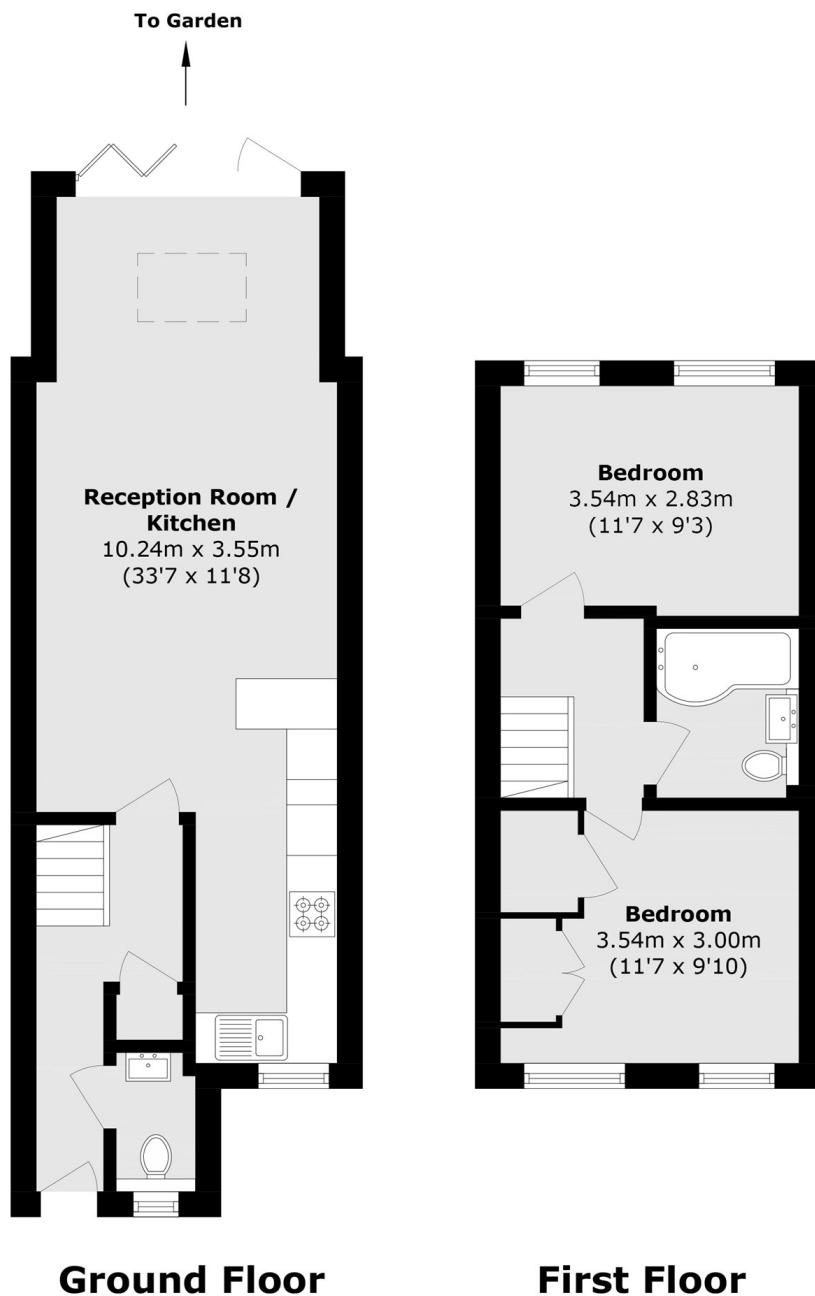
A stylish two-bedroom terraced house with a ground floor extension conveniently positioned moments from the open spaces of Mountsfield Park. The property also benefits from a well-maintained rear garden and allocated off-street parking.

Stainton Road is a residential road equidistant from Hither Green, Ladywell and Catford stations with frequent services into London and the City.

### Features

- Two Double Bedrooms
- Front And Rear Garden
- Large Reception Room
- Off Street Parking
- Close To Mountsfield Park
- Close To Transport Links

# Stainton Road, London, SE6



Total area (approx.): 67.0 sq. m (721.9 sq. ft)