



**17 St Marys Road, Lanstephan
Launceston, Cornwall, PL15 8JW**

Guide Price £164,950 Freehold





A mid-terrace house with garden and views to Launceston Castle

- No Onward Chain
 - 3 Bedrooms
- Kitchen/Breakfast Room
- Separate Utility Room
- Lounge with Views
- First Floor Bathroom
- Front & Rear Garden
- EPC D & Council Tax B

SITUATION Located in an established residential area on the edge of Launceston town, approximately ½ a mile from Spar and Homeleigh Garden Centre. Launceston offers a comprehensive range of amenities including supermarkets, doctors', dentists' and veterinary surgeries, together with educational facilities, numerous sporting clubs and a testing 18-hole golf course within ½ mile.

The vital A30 is less than 2 miles away and connects the Cathedral cities of Truro and Exeter. At Exeter there is access to the M5 motorway network, mainline railway station serving London Paddington and an international airport.

DESCRIPTION A mid-terrace ex-local authority property, believed to have been built in the 1970's.

With some cosmetic improvement, the property would make a comfortable family home.

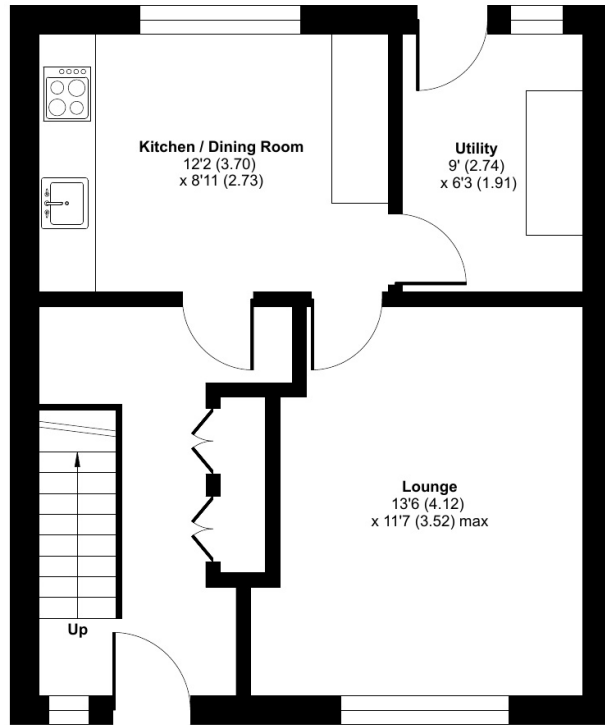
The accommodation is clearly illustrated on the floorplan and comprises: part glazed entrance door with side casement opening into the hallway with stairs rising to the first floor, understairs recess and cloaks cupboard with louvre doors.

The kitchen/breakfast room has a range of base and wall mounted unit, inset 4 ring stainless steel hob with oven under, inset 1½ bowl stainless steel sink with mixer taps, space and plumbing for washing machine and space for undercounter fridge. Window to rear aspect and door opening into the utility room with base and wall mounted units and consumer box.

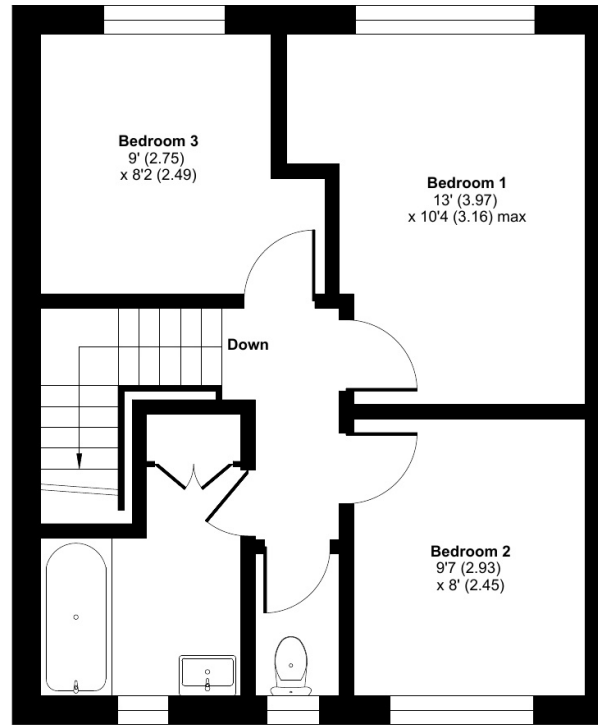


Approximate Area = 868 sq ft / 80.6 sq m

For identification only - Not to scale



GROUND FLOOR



FIRST FLOOR

Floor plan produced in accordance with RICS Property Measurement 2nd Edition, incorporating International Property Measurement Standards (IPMS2 Residential). © nrichcom 2026. Produced for David J Robinson Estate Agent and Auctioneers Ltd. REF: 1454752



For more information or to arrange a viewing, please contact us:

T: 01566 777888 | E: sales@djrestateagents.co.uk | W: www.djrestateagents.co.uk



FEDERATION OF INDEPENDENT AGENTS



BRITISH PROPERTY AWARDS 2025

GOLD WINNER

ESTATE AGENT IN LAUNCESTON



David J Robinson Estate Agents & Auctioneers Ltd assume no responsibility for any statement that may be made in these particulars. These particulars do not form part of any offer or contract and must not be relied upon as statements or representations of fact. Whilst every effort has been made to ensure these particulars are accurate, the text, photographs, plans, measurements and distances are for guidance only. The Agents have not tested or inspected any services or facilities. Interested parties must satisfy themselves by inspection or otherwise.

DAVID J ROBINSON
ESTATE AGENTS & AUCTIONEERS