



Court Way, W3

£3,000 Per calendar month

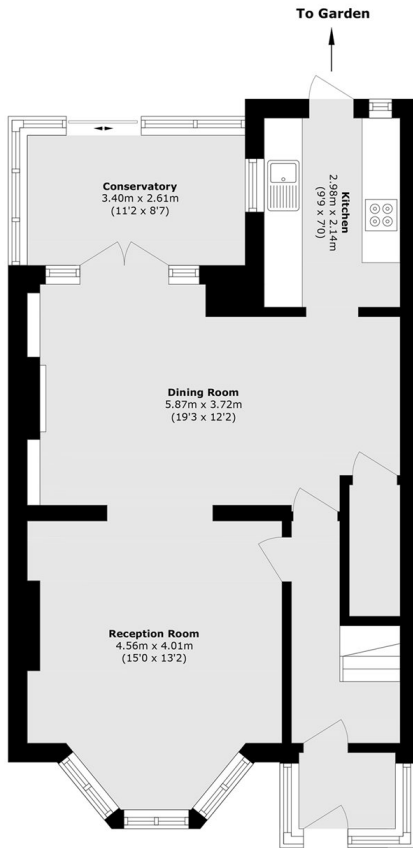
This beautifully presented four bedroom family home is situated in a sought after area of Acton and arranged over three floors. The property comprises a separate kitchen, a modern family bathroom and large rear garden.

Court Way is situated moments from the North Acton Playing Fields area as well as all the local shops and restaurants that Horn Lane has to offer. Acton Main Line (Elizabeth Line) is located 0.5 miles from the property.

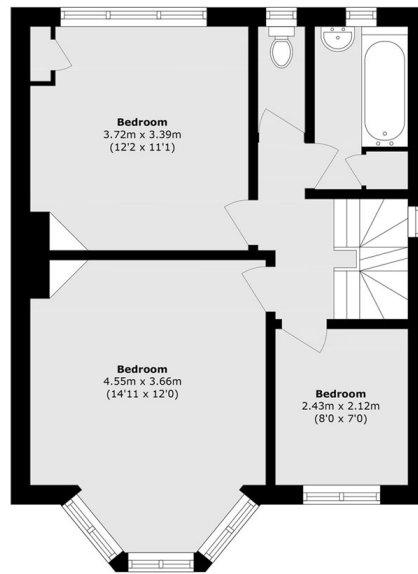
Features

- Four Bedrooms
- Large Family Bathroom
- Separate Kitchen
- Large Private Garden
- On Street Parking
- Close to the Tube

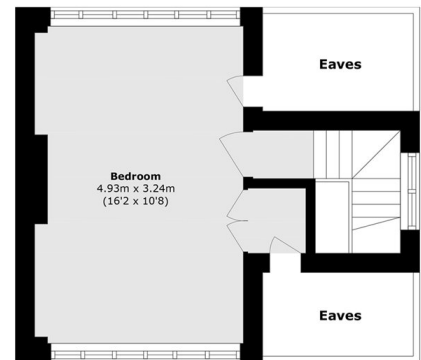
Court Way, London, W3



Ground Floor



First Floor



Second Floor

Total area (approx.): 127.7 sq. m (1374.5 sq. ft)
(Excluding Eaves)