



**Connells**

Charles Crescent  
Rochford



## Property Description

Nestled in the sought-after location, this immaculate three-bedroom family home offers modern living in a peaceful, well-connected setting. The property features a bright and spacious lounge, a contemporary kitchen, and the added convenience of a ground-floor cloakroom.

Upstairs, three well-proportioned bedrooms provide comfortable accommodation for a growing family, with the first floor bathroom, there is fantastic outside space provided by the enclosed garden. With excellent access to local schools, everyday amenities, and beautiful green spaces, this home combines practicality with lifestyle appeal.

A superb opportunity for buyers seeking a move-in-ready property in a desirable location.

Nestled in the sought-after location, this immaculate three-bedroom family home offers modern living in a peaceful, well-connected setting. The property features a bright and spacious lounge, a contemporary kitchen, and the added convenience of a ground-floor cloakroom.

Upstairs, three well-proportioned bedrooms provide comfortable accommodation for a growing family, with the first floor bathroom, there is fantastic outside space provided by the enclosed garden. With excellent access to local schools, everyday amenities, and beautiful green spaces, this home combines practicality with lifestyle appeal.

A superb opportunity for buyers seeking a

move-in-ready property in a desirable location.

Nestled in the sought-after location, this immaculate three-bedroom family home offers modern living in a peaceful, well-connected setting. The property features a bright and spacious lounge, a contemporary kitchen, and the added convenience of a ground-floor cloakroom.

Upstairs, three well-proportioned bedrooms provide comfortable accommodation for a growing family, with the first floor bathroom, there is fantastic outside space provided by the enclosed garden. With excellent access to local schools, everyday amenities, and beautiful green spaces, this home combines practicality with lifestyle appeal.

A superb opportunity for buyers seeking a move-in-ready property in a desirable location.

Nestled in the sought-after location, this immaculate three-bedroom family home offers modern living in a peaceful, well-connected setting. The property features a bright and spacious lounge, a contemporary kitchen, and the added convenience of a ground-floor cloakroom.

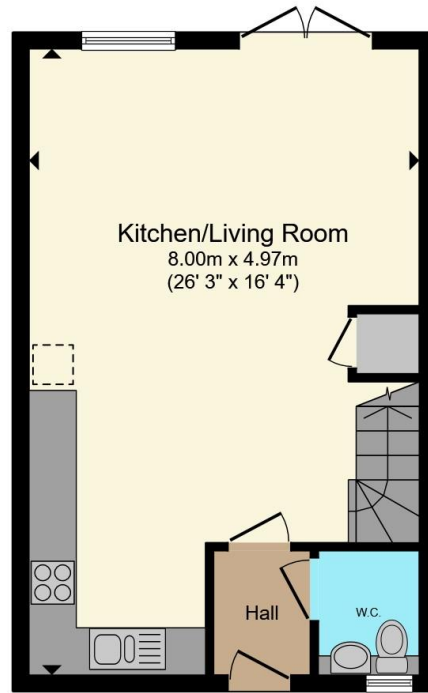
Upstairs, three well-proportioned bedrooms provide comfortable accommodation for a growing family, with the first floor bathroom, there is fantastic outside space provided by the enclosed garden. With excellent access to local schools, everyday amenities, and beautiful green spaces, this home combines practicality with lifestyle appeal.

A superb opportunity for buyers seeking a move-in-ready property in a desirable location.

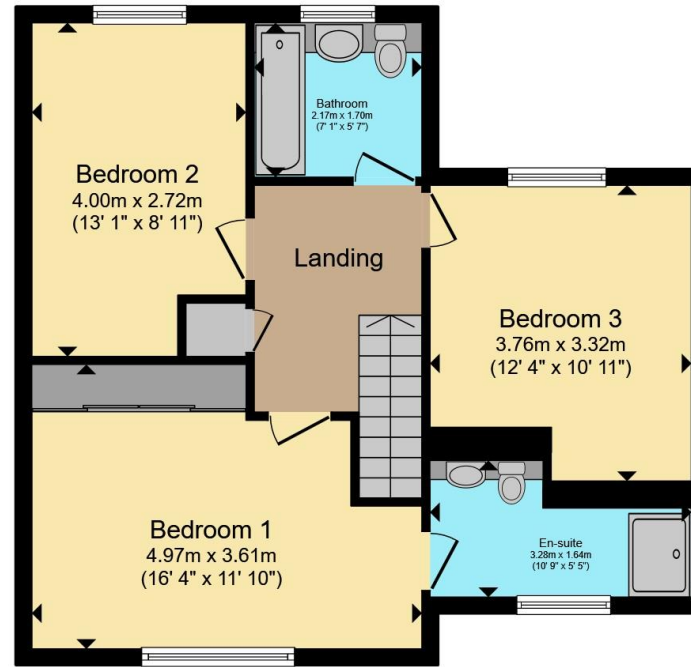








**Ground Floor**



**First Floor**

Total floor area 96.7 m<sup>2</sup> (1,041 sq.ft.) approx

This floor plan is for illustrative purposes only. It is not drawn to scale. Any measurements, floor areas (including any total floor area), openings and orientation are approximate. No details are guaranteed, they cannot be relied upon for any purpose and they do not form part of any agreement. No liability is taken for any error, omission or misstatement. A party must rely upon its own inspection(s). Powered by [www.propertybox.io](http://www.propertybox.io)



To view this property please contact Connells on

**T 01268 777 767**  
**E [rayleigh@connells.co.uk](mailto:rayleigh@connells.co.uk)**

113-115 High Street  
 RAYLEIGH SS6 7QA

EPC Rating: B Council Tax  
 Band: D

Tenure: Freehold

**view this property online [connells.co.uk/Property/RAY309269](http://connells.co.uk/Property/RAY309269)**



1. MONEY LAUNDERING REGULATIONS Intending purchasers will be asked to produce identification documentation at a later stage and we would ask for your co-operation in order that there will be no delay in agreeing the sale. 2. These particulars do not constitute part or all of an offer or contract. 3. The measurements indicated are supplied for guidance only and as such must be considered incorrect. Potential buyers are advised to recheck measurements before committing to any expense. 4. We have not tested any apparatus, equipment, fixtures, fittings or services and it is in the buyers interest to check the working condition of any appliances.

Connells Residential is registered in England and Wales under company number 1489613, Registered Office is Cumbria House, 16-20 Hockliffe Street, Leighton Buzzard, Bedfordshire, LU7 1GN. VAT Registration Number is 500 2481 05.

**See all our properties at [www.connells.co.uk](http://www.connells.co.uk) | [www.rightmove.co.uk](http://www.rightmove.co.uk) | [www.zoopla.co.uk](http://www.zoopla.co.uk)**

Property Ref: RAY309269 - 0002