



HOLMSLEY HOUSE, SW15

£180,000

One double bedroom
Eight floor apartment
Moments from Richmond Park
Ideal FTB or rental investment
Balcony & lift
Chain free

@marshandparsons
marshandparsons.co.uk

MARSH &
PARSONS

ABOUT THE PROPERTY

Marsh & Parsons have been instructed to sell this one double bedroom apartment located in this popular purpose built 1960s tower block, located moments from the green open spaces of Richmond Park.

The flat comprises entrance hallway, spacious reception room with door opening onto balcony with fabulous views of Richmond Park. The property has a separate kitchen and bathroom, The bedroom is a great size and benefits fitted wardrobe, The property has lift access.

This property would make an ideal First Time Buy or Rental Investment. Chain free.

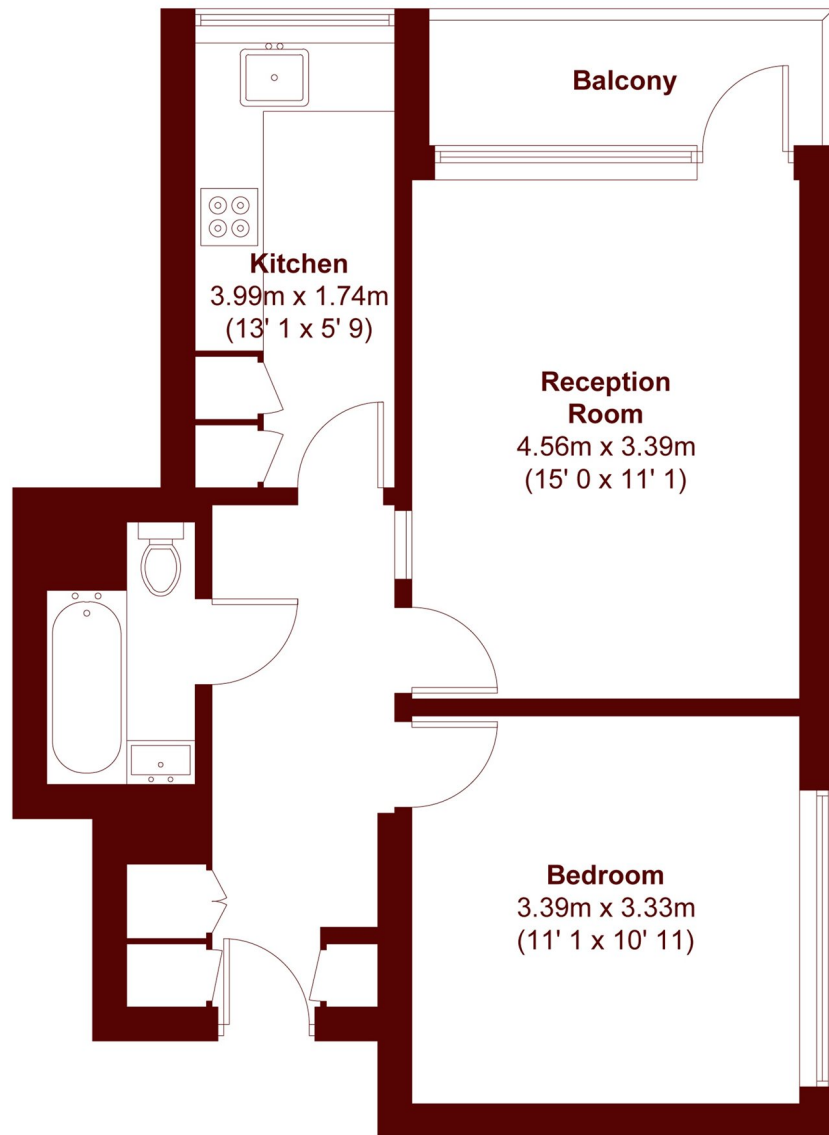








STEP INSIDE HOLMSLEY HOUSE



APPROX. GROSS INTERNAL FLOOR AREA = 514 SQFT / 47.8 SQM
APPROX. GROSS EXTERNAL BALCONY AREA = 46 SQFT / 4.3 SQM

Barnes & East Sheen
020 8563 8333

Energy Rating: C We aim to make our particulars both accurate and reliable. However, they are not guaranteed; nor do they form part of an offer or contract. If you require clarification on any points then please contact us, especially if you're traveling some distance to view. Please note that appliances and heating systems have not been tested and therefore no warranties can be given as to their good working order

**MARSH &
PARSONS**