

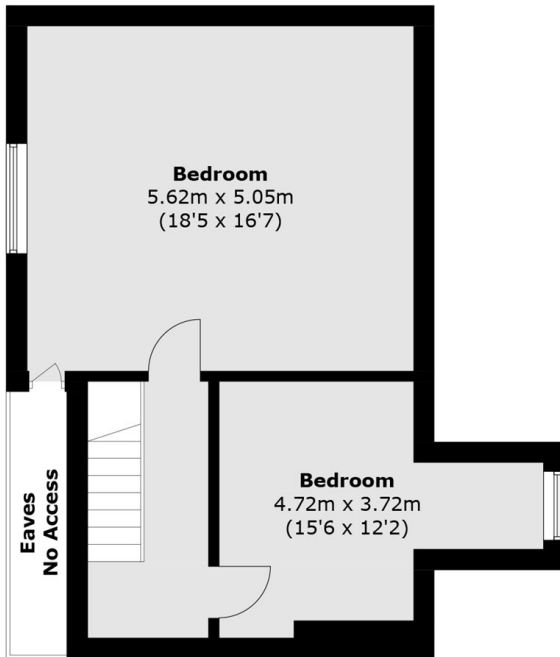


BEATRICE AVENUE, SW16

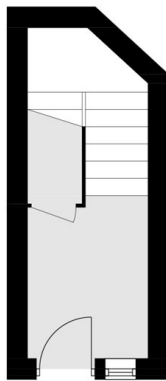
£375,000

- First floor maisonette
- Three Bedrooms
- Close to Amenities
- Scope to Improve
- Good Access to Transport Links
- Energy Rating: D

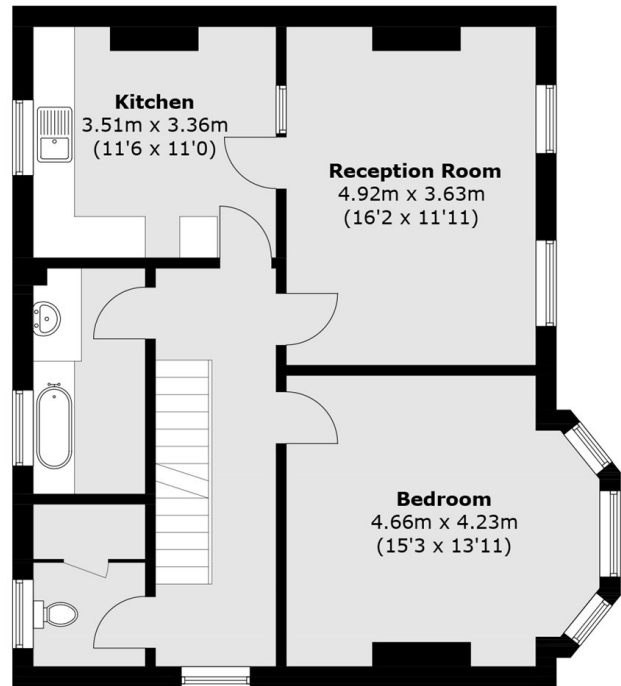




Second Floor



Ground Floor



First Floor

Total area (approx.): 127.6 sq. m (1,373.3 sq. ft)
(Excluding Eaves)

JACKSONS STREATHAM

1-3 De Montfort Parade,
Streatham High Road,
Sales: 020 8487 3179
Lettings: 020 8487 3180

Energy Rating: D We aim to make our particulars both accurate and reliable. However they are not guaranteed; nor do they form part of an offer or contract. If you require clarification on any points then please contact us, especially if you're traveling some distance to view. Please note that appliances and heating systems have not been tested and therefore no warranties can be given as to their good working order.