



FORGE END COTTAGE

Coldharbour, Dorking, Surrey



## AN IDYLIC ONE-BEDROOM COTTAGE WITH AN ABUNDANCE OF CHARACTER

### Summary of accommodation

**Ground Floor:** Kitchen | Living/dining room | Shed

**First Floor:** Bedroom | Bathroom

### Distances

**Local towns:** Dorking town centre 4.8 miles, Reigate 11.5 miles, Guildford 14.3 miles

**Train stations:** Dorking mainline station 4.9 miles (London Waterloo from 53 minutes, London Victoria 56 minutes)

Leatherhead station 9.7 miles (London Waterloo 45 minutes, London Victoria 51 minutes,

Guildford mainline station 14.2 miles (from 32 minutes to London Waterloo),

**Roads:** A3 West Clandon 13.3 miles, M25 (Leatherhead Junction 9) 10.4 miles

**Airports:** London Gatwick 12.6 miles, London Heathrow 31.9 miles

(All distances and times are approximate)

# SITUATION

Coldharbour is an exceptionally charming village, renowned for its enduring rural character and beautiful countryside setting. Situated within the Surrey Hills Area of Outstanding Natural Beauty, it provides an outstanding environment for outdoor pursuits, whether enjoying gentle walks, longer explorations, or simply taking in the remarkable scenery.

This peaceful village epitomises traditional countryside living, offering a quiet retreat from the activity of nearby towns. The local property landscape is defined by a delightful blend of period houses, characterful cottages and attractive farmhouses, all reflecting the area's rich architectural heritage and capturing the essence of refined rural living.

The area benefits from an excellent range of schools, including Hurtwood House in Holmbury St Mary, The Duke of Kent School in Ewhurst, St John's school in Leatherhead, St Teresa's in Effingham, Cranmore in West Horsley, Cranleigh School in Cranleigh, St Catherine's in Bramley, and Charterhouse in Godalming.

The surrounding countryside offers an abundance of scenic walking routes, including the celebrated Leith Hill and Box Hill, both famed for their sweeping panoramic views. Quiet country lanes are particularly popular with cyclists, while the Surrey Hills Sculpture Trail provides a unique fusion of contemporary art and natural landscape. Nearby, Denbies Wine Estate- England's largest vineyard- offers guided tours and tastings, while the National Trust property Polesden Lacey showcases elegant Edwardian architecture set within beautifully maintained gardens.

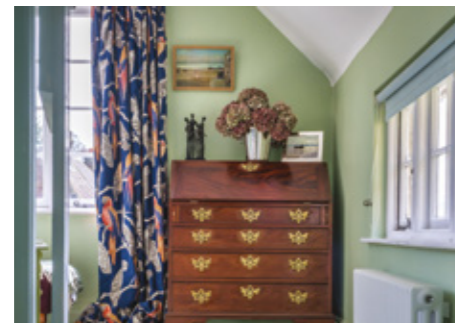
Dorking, a charming and historic market town, is a short drive away and offers an excellent selection of independent shops, acclaimed restaurants and a rich cultural scene. With prestigious golf courses such as Dorking Golf Club close at hand, Coldharbour presents a highly desirable setting for those seeking a seamless blend of countryside tranquillity, outdoor lifestyle and high quality amenities.

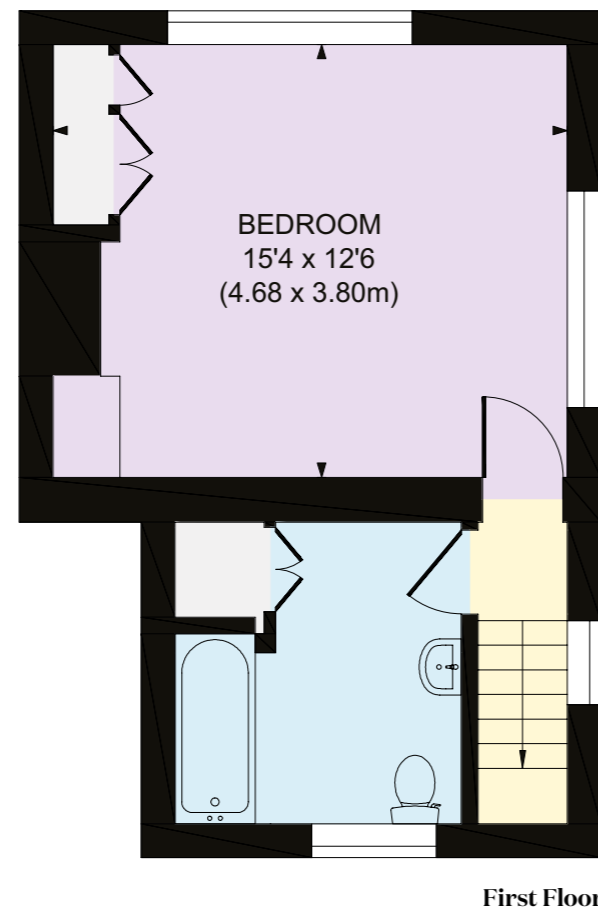
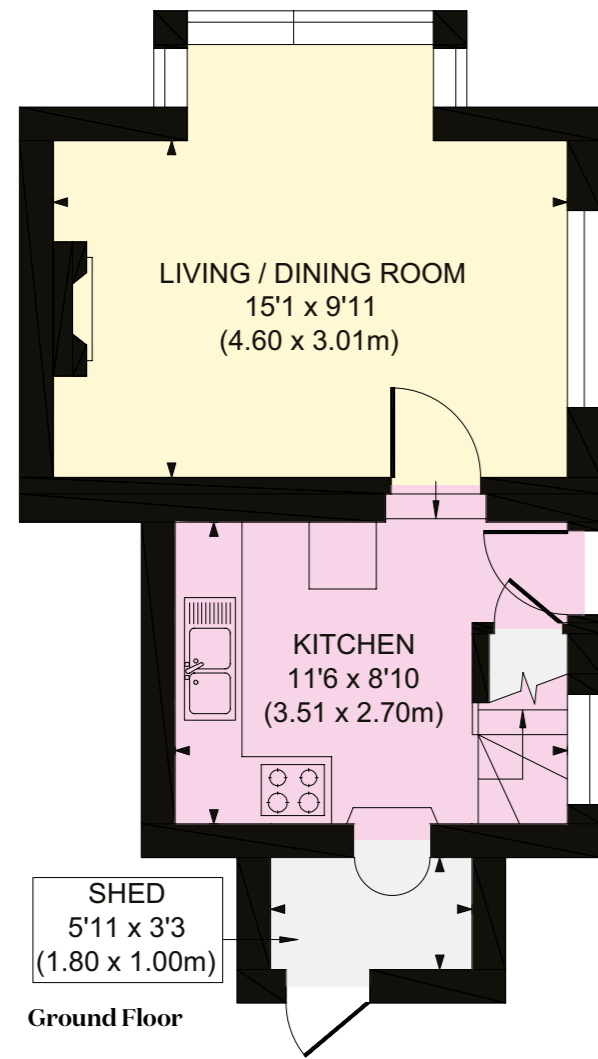


# FORGE END COTTAGE

Forge End Cottage is a charming light filled cottage located in a quiet position with lovely views and an array of beautiful walks straight from the door. The property is full of charm and character with a wood-burning stove in the living room, as well as a large bay window and exposed beams. The kitchen has exposed stone walls, AGA and hand made units.

Upstairs, there is a large bathroom and a large and bright bedroom with beautiful far-reaching views.





- Reception
- Bedroom
- Bathroom
- Kitchen/Utility
- Storage
- Outside

Approximate Gross Internal Area  
Main House 595 sq. ft / 55.30 sq. m  
Shed 19 sq. ft / 1.80 sq. m  
Total 615 sq. ft / 57.10 sq. m

This plan is for layout guidance only. Not drawn to scale unless stated. Windows and door openings are approximate. Whilst every care is taken in the preparation of this plan, please check all dimensions, shapes and compass bearings before making any decisions reliant upon them.



## GARDEN AND GROUNDS

To the front of the property is a small gravel patio, a perfect spot for your morning coffee. To the rear of the house there is a small garden space and garden shed.

## PROPERTY INFORMATION

**Services:** We are advised by our clients that the property has mains water, electricity, drainage and recently installed Wi-Fi controlled electric heating.

**Local Authority:** Mole Valley Borough Council: 01306 885001

**Energy Performance Certificate:** Rating G

**Council Tax Band:** D

**Tenure:** Freehold

### Directions

**Postcode:** RH5 6HE

**What3words:** ///flank.paints.pillow

**Viewings:** Viewing is strictly by appointment through Knight Frank.



I would be delighted  
to tell you more.

**Morten Boardman**

01483 617930

morten.boardman@knightfrank.com

**Knight Frank Guildford**

2-3 Eastgate Court, High Street

Guildford GU1 3DE

**knightfrank.co.uk**

Your partners in property

1. Particulars: These particulars are not an offer or contract, nor part of one. You should not rely on statements given by Knight Frank in the particulars, by word of mouth or in writing ("information") as being factually accurate about the property, its condition or its value. Neither Knight Frank nor any joint agent has any authority to make any representations about the property, and accordingly any information given is entirely without responsibility on the part of Knight Frank. 2. Material Information: Please note that the material information is provided to Knight Frank by third parties and is provided here as a guide only. While Knight Frank has taken steps to verify this information, we advise you to confirm the details of any such material information prior to any offer being submitted. If we are informed of changes to this information by the seller or another third party, we will use reasonable endeavours to update this as soon as practical. 3. Photos, Videos etc: The photographs, property videos and virtual viewings etc. show only certain parts of the property as they appeared at the time they were taken. Areas, measurements and distances given are approximate only. 4. Regulations etc: Any reference to alterations to, or use of, any part of the property does not mean that any necessary planning, building regulations or other consent has been obtained. A buyer must find out by inspection or in other ways that these matters have been properly dealt with and that all information is correct. 5. Fixtures and fittings: A list of the fitted carpets, curtains, light fittings and other items fixed to the property which are included in the sale (or may be available by separate negotiation) will be provided by the Seller's Solicitors. 6. VAT: The VAT position relating to the property may change without notice. 7. To find out how we process Personal Data, please refer to our Group Privacy Statement and other notices at <https://www.knightfrank.com/legals/privacy-statement>.

Particulars dated April 2026. Photographs and videos dated April 2026. All information is correct at the time of going to print. Knight Frank is the trading name of Knight Frank LLP. Knight Frank LLP is a limited liability partnership registered in England and Wales with registered number OC305934. Our registered office is at 55 Baker Street, London W1U 8AN. We use the term 'partner' to refer to a member of Knight Frank LLP, or an employee or consultant. A list of members names of Knight Frank LLP may be inspected at our registered office. If you do not want us to contact you further about our services then please contact us by either calling 020 3544 0692, email to [marketing.help@knightfrank.com](mailto:marketing.help@knightfrank.com) or post to our UK Residential Marketing Manager at our registered office (above) providing your name and address. Brochure by [wordperfectprint.com](http://wordperfectprint.com)