

FREEHOLD



House - End Terrace (EPC Rating: D)

40 CROFTON AVENUE, BEXLEY, DA5 3AR

Asking price

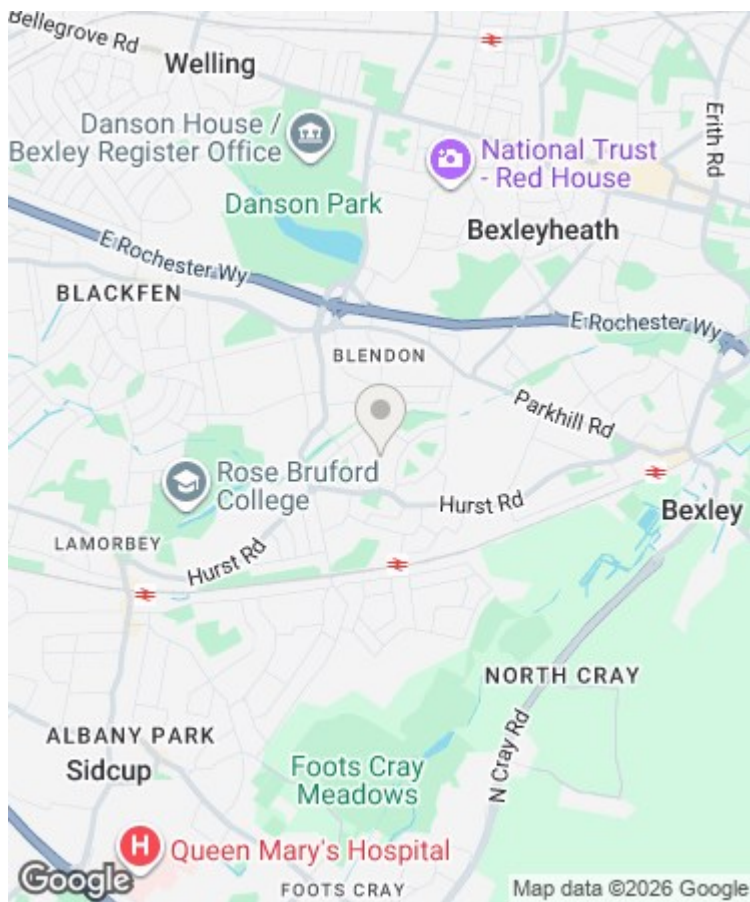
£595,000

Westwood
PROPERTY SERVICES



4 Bedroom House - End Terrace located in Bexley

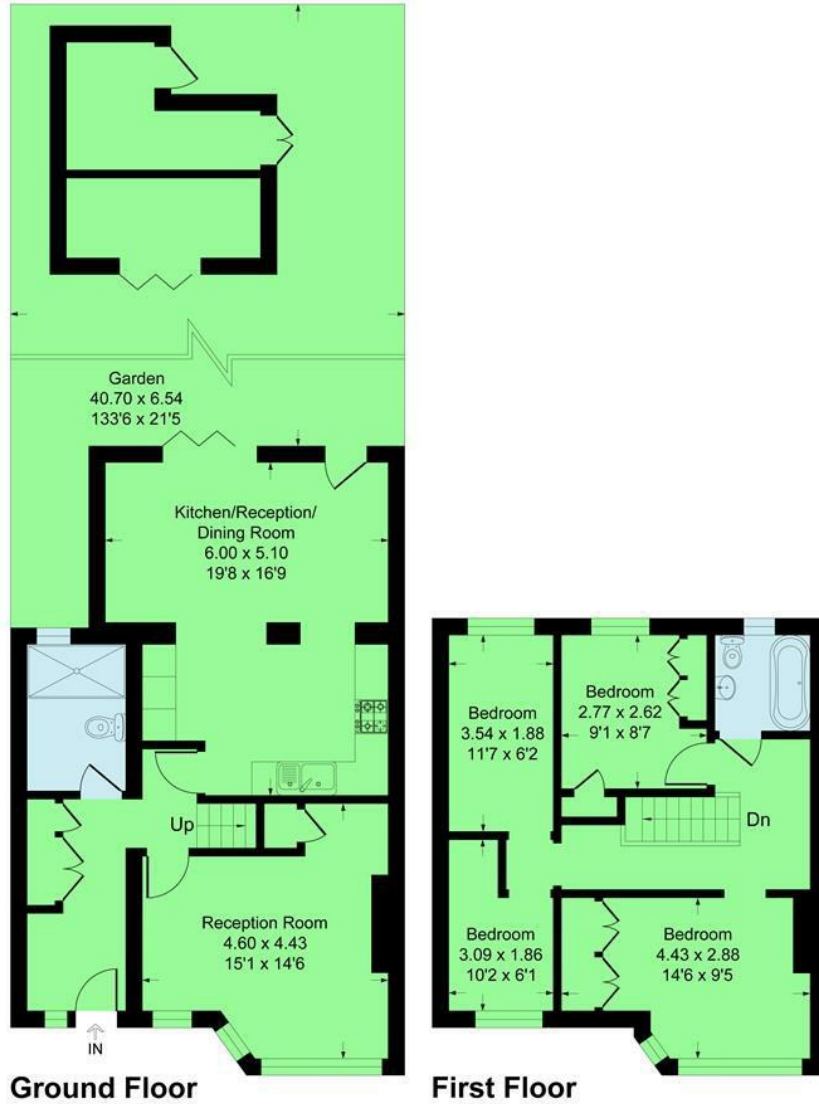
Offered to the market on the popular Crofton Avenue, Bexley we are pleased to offer for sale this modern and well presented four bedroom end of terraced home. Having been thoughtfully refurbished and extended the home comprises entrance hall with built-in storage, living room measuring 15'1 x 14'6, open plan kitchen/dining/living area with bi-folding doors to the garden, ground floor bathroom, four family sized first floor bedrooms and a contemporary bathroom suite. The rear garden extends to approximately 130ft and benefits from a summerhouse/outbuilding with rear access. Additional points to note include double glazing, gas central heating and a driveway to the front for two cars. An internal viewing comes highly recommended.



SIDCUP | 2 CENTRAL PARADE SIDCUP, GREATER LONDON, DA15 7DH

Crofton Avenue, DA5

Approximate Gross Internal Area 108.6 sq m / 1169 sq ft



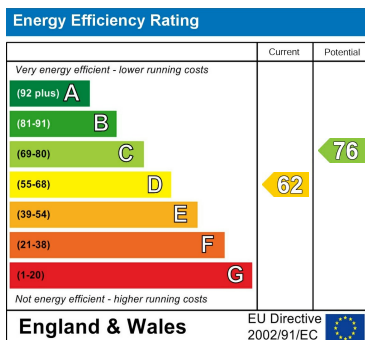
This plan is for layout guidance only. Not drawn to scale unless stated. Windows and door openings are approximate. Whilst every care is taken in the preparation of this plan, please check all dimensions, shapes and compass bearings before making any decisions reliant upon them.
Produced By Planpix



Council Tax Band

E

Energy Performance Graph



Call us on

020 8301 5511

sales@westwoodpropertyservices.co.uk

Agents Note: Whilst every care has been taken to prepare these particulars, they are for guidance purposes only. All measurements are approximate and are for general guidance purposes only and whilst every care has been taken to ensure their accuracy, they should not be relied upon and potential buyers are advised to recheck the measurements.

