



P  
Permit  
holders  
only  
9 am - 8 pm

**Beaconsfield Villas  
Brighton, BN1 6HA**

**FERMERS**



5



3



3



**TENURE**  
Freehold

**EPC RATING**  
D

**COUNCIL TAX BAND**  
F



**Energy Efficiency Rating**

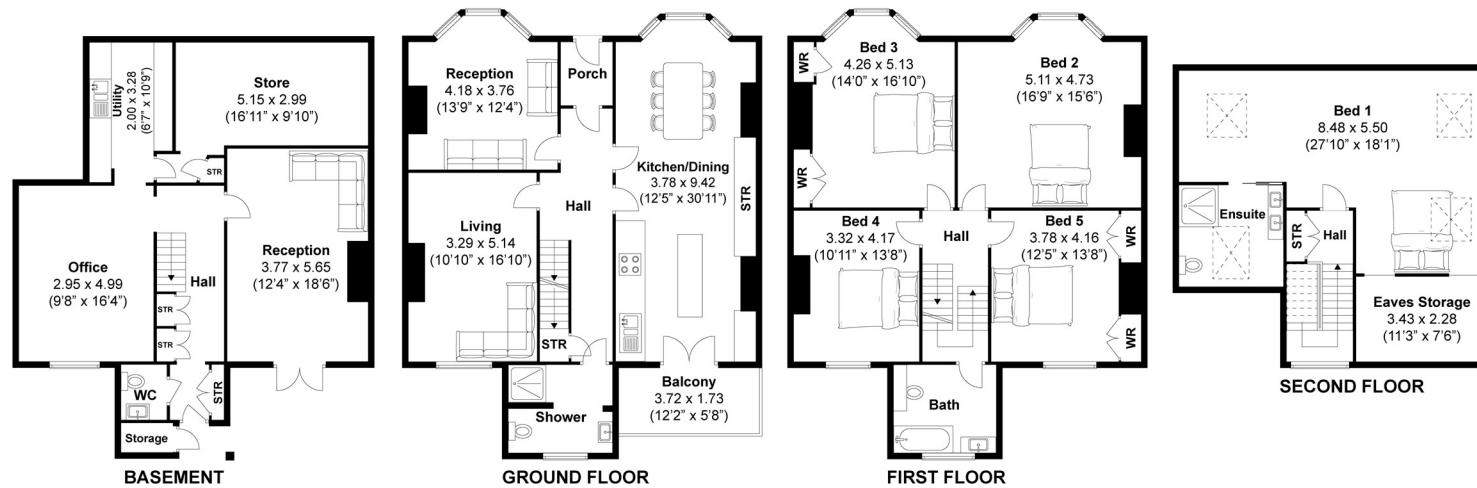
	Current	Potential
Very energy efficient - lower running costs		
(92 plus) <b>A</b>		
(81-91) <b>B</b>		<b>81</b>
(69-80) <b>C</b>		
(55-68) <b>D</b>	<b>65</b>	
(39-54) <b>E</b>		
(21-38) <b>F</b>		
(1-20) <b>G</b>		
Not energy efficient - higher running costs		



# Beaconsfield Villas

## Beaconsfield Villas, Brighton

Approximately 327 sqm (3524 sqft)



### Disclaimer:

The measurements are approximate and are for illustration purposes only. The dimensions are measured internally and in metres and feet. We do not take any responsibility for errors and/or omissions. If you require further verification please discuss with the buyer/owner of the property.



# FERMERS

### OFFICE ADDRESS

67 Queen Victoria Avenue  
Hove  
East Sussex  
BN3 6XA

### OFFICE DETAILS

01273 541 177  
sales@fermers.co.uk  
www.Fermers.co.uk

Agents Note: Whilst every care has been taken to prepare these particulars, they are for guidance purposes only. All measurements are approximate and are for general guidance purposes only and whilst every care has been taken to ensure their accuracy, they should not be relied upon and potential buyers/tenants are advised to recheck the measurements