



Flat 5, Oak Park House, 11 Oak Park Villas

Guide Price £115,000





Flat 5

Oak Park House, Dawlish

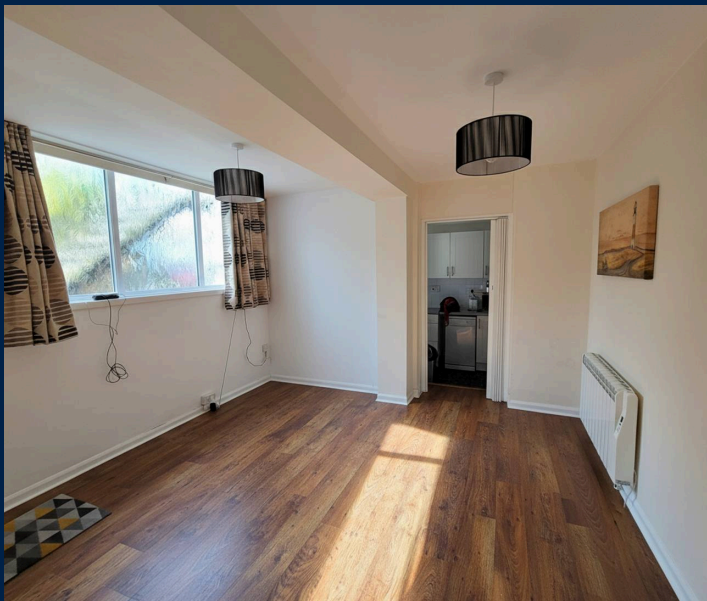
Council Tax band: A

Tenure: Leasehold

EPC Energy Efficiency Rating: D

EPC Environmental Impact Rating:

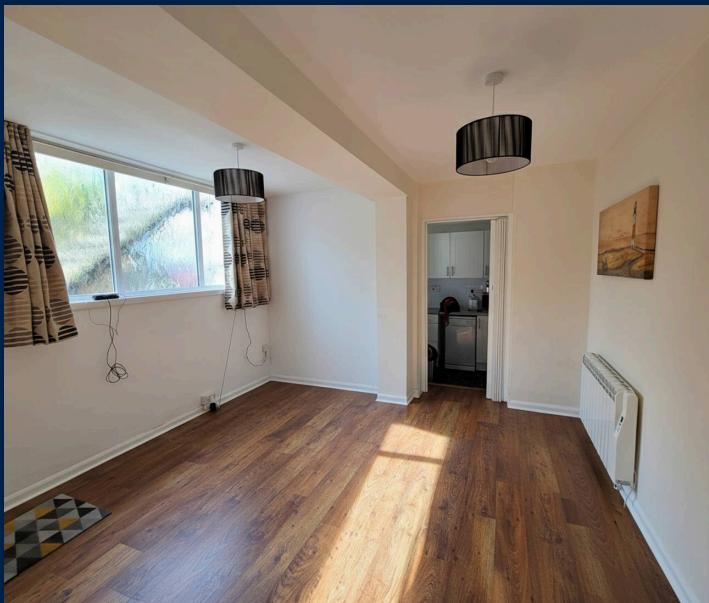
- GROUND FLOOR APARTMENT SITUATED CLOSE TO TOWN, LOCAL AMENITIES, BEACH AND TRAIN STATION ETC
- OFFERED TO THE MARKET WITH NO ONWARD CHAIN
- ENTRANCE PORCH
- SITTING/LIVING ROOM DINER
- KITCHEN
- ONE DOUBLE BEDROOM
- MODERN SHOWER ROOM
- UPVC DOUBLE GLAZING, ELECTRIC HEATING
- ALLOCATED PARKING
- VIEWING HIGHLY RECOMMENDED TO APPRECIATE THE ACCOMMODATION ON OFFER



You can include any text here. The text can be modified upon generating your brochure.



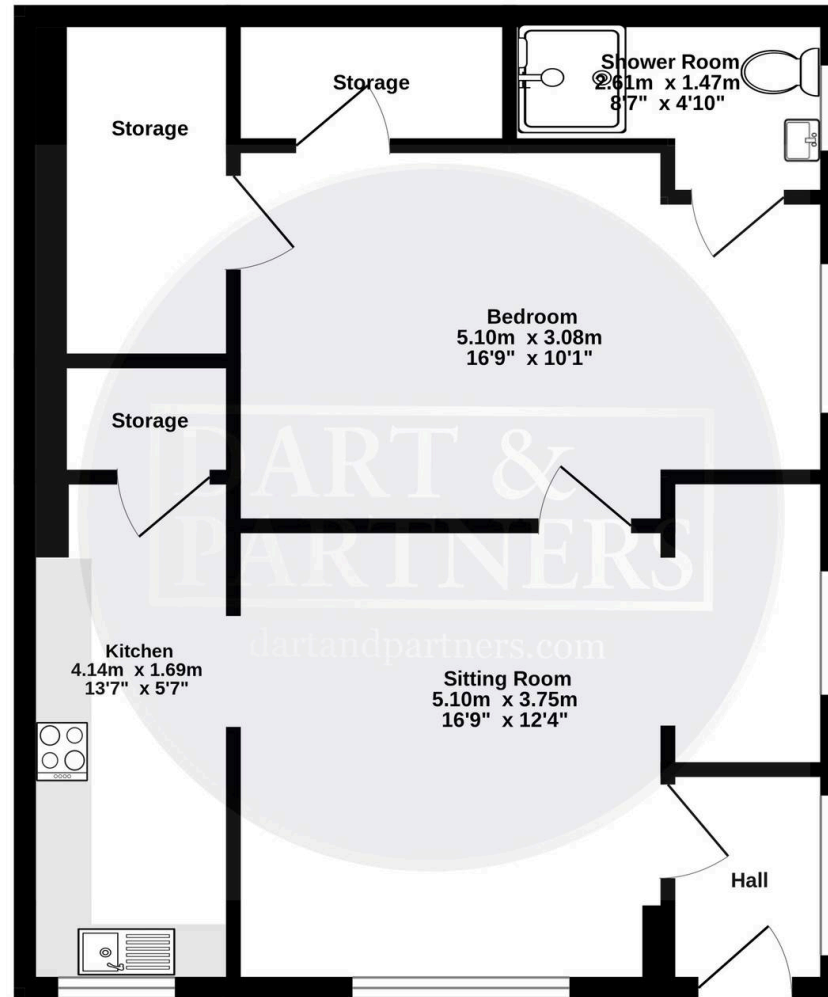
You can include any text here. The text can be modified upon generating your brochure.



You can include any text here. The text can be modified upon generating your brochure.



Ground Floor
50.4 sq.m. (543 sq.ft.) approx.



TOTAL FLOOR AREA : 50.4 sq.m. (543 sq.ft.) approx.

Whilst every attempt has been made to ensure the accuracy of the floorplan contained here, measurements of doors, windows, rooms and any other items are approximate and no responsibility is taken for any error, omission or mis-statement. This plan is for illustrative purposes only and should be used as such by any prospective purchaser. The services, systems and appliances shown have not been tested and no guarantee as to their operability or efficiency can be given.
Made with Metropix G2026

