



Lawson Road, Leighton Buzzard

£395,000





# Lawson Road, Leighton Buzzard

£395,000

- **Three bedroom semi-detached home**
- **First purchased new in 2024**
- **Quiet cul-de-sac position**
- **Principal bedroom with en-suite**
- **Two parking spaces directly in front of the house**
- **Chain free and ready to go**
- **Sought-after Leestone Park development**
- **Three double bedrooms**
- **Spacious rear garden with side access**
- **Nearly new modern home**

NEARLY NEW HOME | FIRST PURCHASED IN 2024 | CHAIN FREE | LEESTONE PARK DEVELOPMENT | READY TO MOVE INTO | POPULAR LEIGHTON BUZZARD LOCATION

Situated on the popular Leestone Park development in Leighton Buzzard, this beautifully presented three bedroom semi-detached home on Lawson Road offers modern living in a convenient and well-connected location.

First purchased new in 2024, the property is being offered to the market as a second-hand home but still benefits from a fresh, contemporary feel throughout. Ideal for buyers looking for a nearly new property without the wait of a new build purchase, the home is chain free and ready to go.

The accommodation is well suited to modern family life, with bright and stylish interiors, a practical layout and the benefits expected from a recently built home. As a semi-detached property, it offers a desirable balance of space, comfort and low-maintenance modern living.

Leestone Park is conveniently located for access to Leighton Buzzard town centre, local amenities, schools, green spaces and transport links, including Leighton Buzzard railway station, which offers services towards London Euston.



Situated within the popular Leestone Park development in Leighton Buzzard, this beautifully presented three bedroom semi-detached home offers modern living in a quiet cul-de-sac setting. First purchased new in 2024, the property is offered to the market as a nearly new home, combining a fresh contemporary finish with the convenience of being chain free and ready to move into.

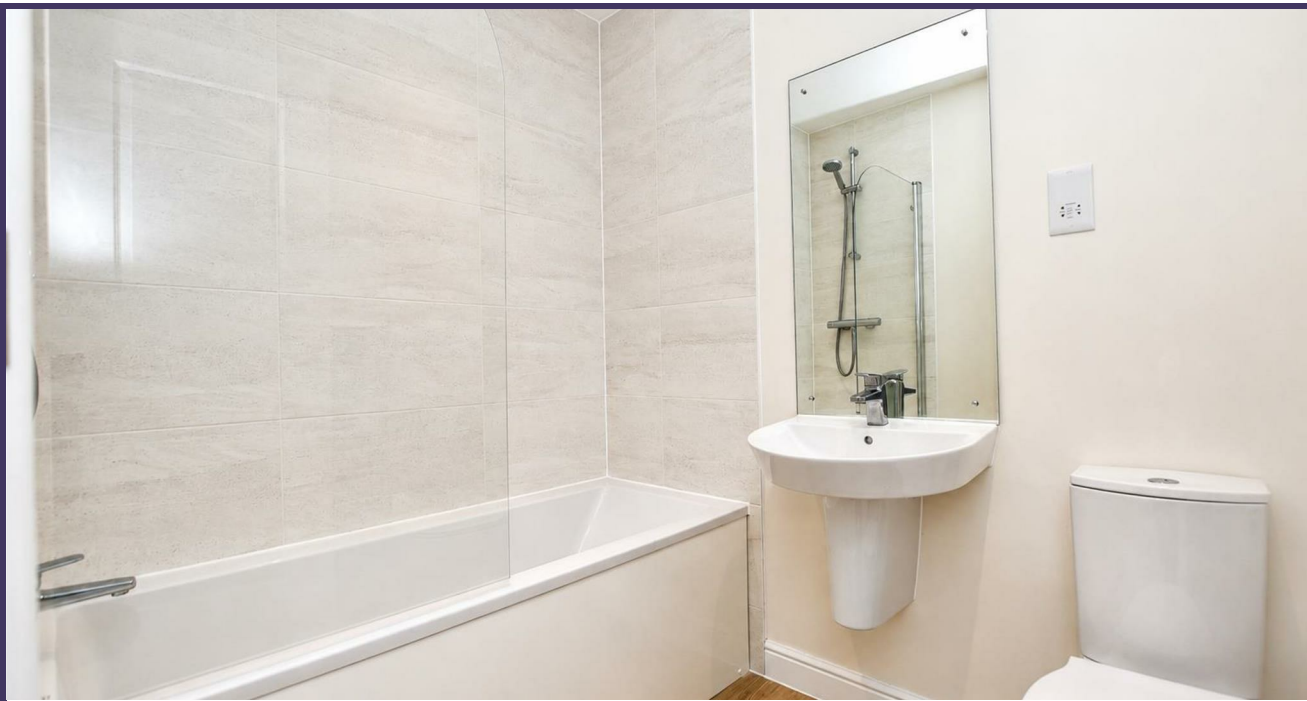
The accommodation is thoughtfully arranged across two floors, beginning with a welcoming entrance hall with space for coats and shoes, as well as access to a downstairs W/C. The main living room provides a comfortable everyday space and leads through to the kitchen/diner at the rear of the property, where doors open directly out to the garden.





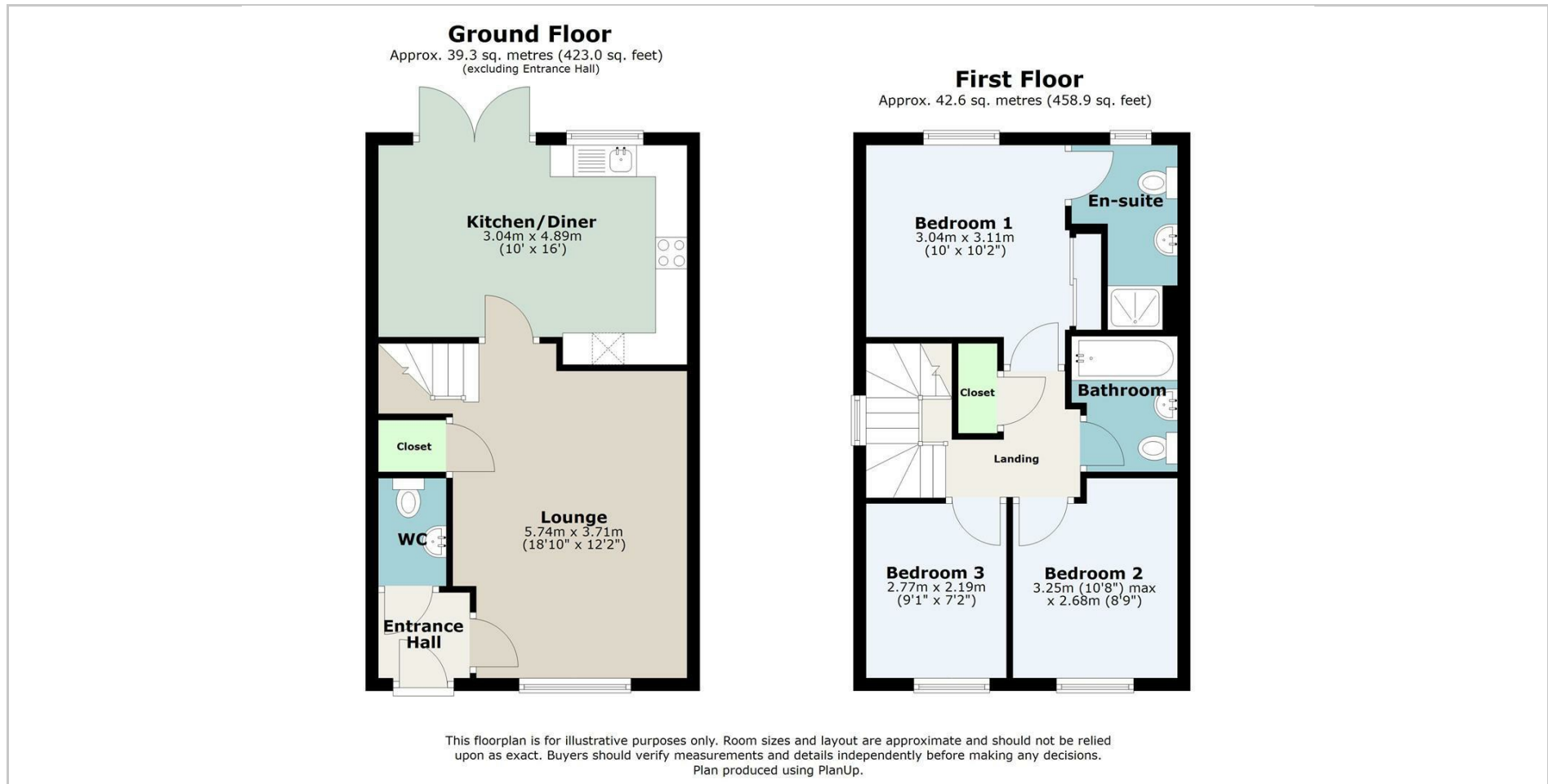
To the first floor, the landing gives access to three double bedrooms and a family bathroom. The principal bedroom is positioned to the rear of the property and benefits from its own en-suite shower room, creating a practical and well-balanced layout ideal for family living, guests or those working from home.

Externally, the property offers side access to a spacious rear garden, providing an excellent area for outdoor seating, dining and entertaining. There are also two parking spaces directly in front of the house, along with ample nearby visitor parking. With local amenities, schools, green spaces, the town centre and transport links all within easy reach, this home is ideally suited to buyers looking for a modern property in a convenient Leighton Buzzard location.





# Floor Plans



## Viewing

Please contact our Leighton Buzzard Office on 01525 377733.

If you wish to arrange a viewing appointment for this property or require further information.

IMPORTANT: Whilst we aim to make our details accurate and reliable, if there is any point of particular concern to you, please contact the office. The apparatus, equipment, fittings and services have not been checked and therefore it is in the purchaser's interest to establish the working condition of the appliance included. Personal items such as furnishings which may be shown in the photographs are not included in the asking price. No survey has been carried out by M & M Properties. Measurements have a tolerance of +/- 3". Please note that this floorplan has not been drawn to scale and is therefore for room layout purposes only. It does not constitute or form part of a contract. Doors may be hung in opposite directions.