

BRUNTON

RESIDENTIAL



BEANLEY PLACE, NEWCASTLE UPON TYNE, NE7

Offers Over £240,000

BRUNTON

RESIDENTIAL





BRUNTON

RESIDENTIAL



BRUNTON

RESIDENTIAL



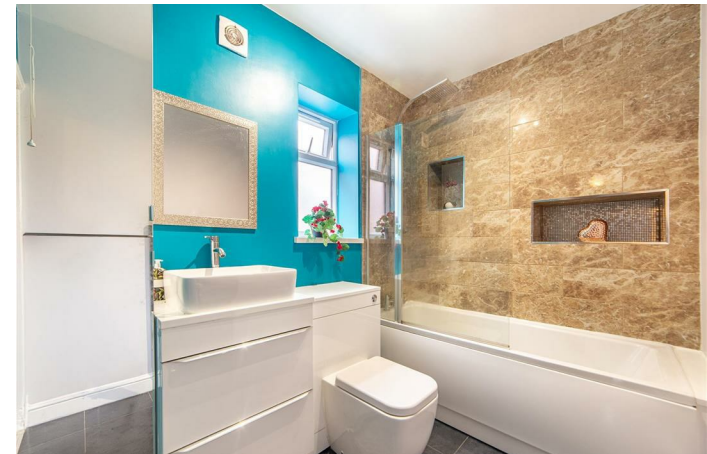
Beautifully presented three-bedroom end-terrace house offering a modern layout with open-plan living, located on Beanley Place, Newcastle Upon Tyne.

The property is arranged over two storeys and features a welcoming entrance hallway with a ground-floor shower room, leading through to a spacious lounge which connects to the kitchen diner at the rear. The first floor provides three bedrooms and a family bathroom, with the home further benefiting from off-road parking and an enclosed rear garden.

Situated on Beanley Place in Newcastle Upon Tyne, the property is well placed for access to a range of local shops, supermarkets and everyday amenities. There are well-regarded schools nearby, along with convenient public transport links and regular bus routes into Newcastle city centre. The property also benefits from good road connections to surrounding areas, making it a practical choice for commuting. Overall, the location is well-suited to first-time buyers, families and professionals seeking convenience and accessibility.

BRUNTON

RESIDENTIAL



BRUNTON

RESIDENTIAL

The internal accommodation comprises: a welcoming entrance hallway with stairs leading up to the first floor and an understairs storage cupboard, with a ground floor shower room positioned off the hallway, fitted with modern tiling and a three-piece suite, providing a practical and convenient addition, and the lounge located to the right.

The lounge is a bright and generously proportioned reception space, finished with wood-effect flooring and offering ample room for furnishings, creating a comfortable and well-presented living area with an open-plan feel, flowing through to the kitchen diner at the rear.

The kitchen/diner is a standout feature, fitted with a sleek range of high gloss wall and base units with complementary work surfaces and integrated appliances including an oven, gas hob and extractor, alongside space and plumbing for additional appliances. A breakfast bar provides informal dining space, while pendant lighting above the dining area and two skylights within the kitchen diner enhance the space with additional natural light. The continuation of the flooring adds to the flow, and French doors open onto the rear garden.

On the first floor, the landing provides access to three bedrooms and the family bathroom. The main bedroom and second bedroom are generous doubles with fitted wardrobes and sliding doors, while the third bedroom is a well-proportioned single room suitable for a variety of uses. The family bathroom is stylishly appointed, featuring tiled flooring, a modern suite with bath and shower over, contemporary wall tiling, and a vanity unit.

Externally, the property offers a block paved driveway to the front providing off-road parking, with a fantastic enclosed south facing rear garden laid to lawn, along with a patio and decked seating area.



BRUNTON

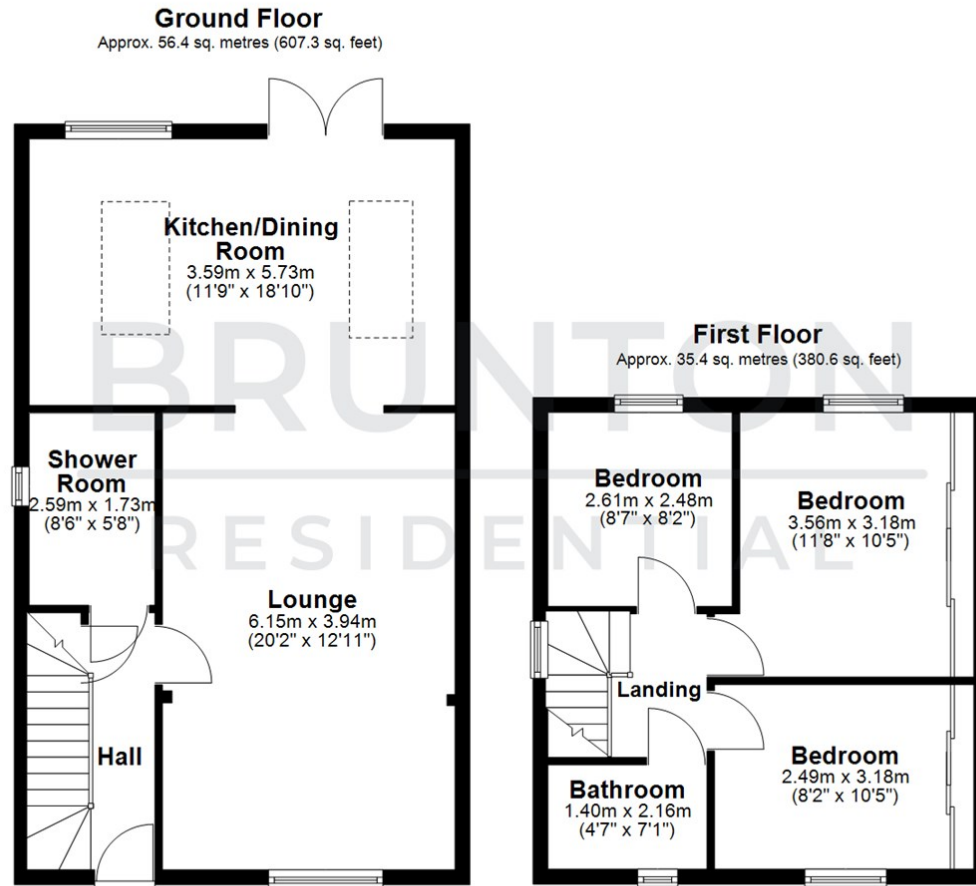
RESIDENTIAL

TENURE : Freehold

LOCAL AUTHORITY : Newcastle CC

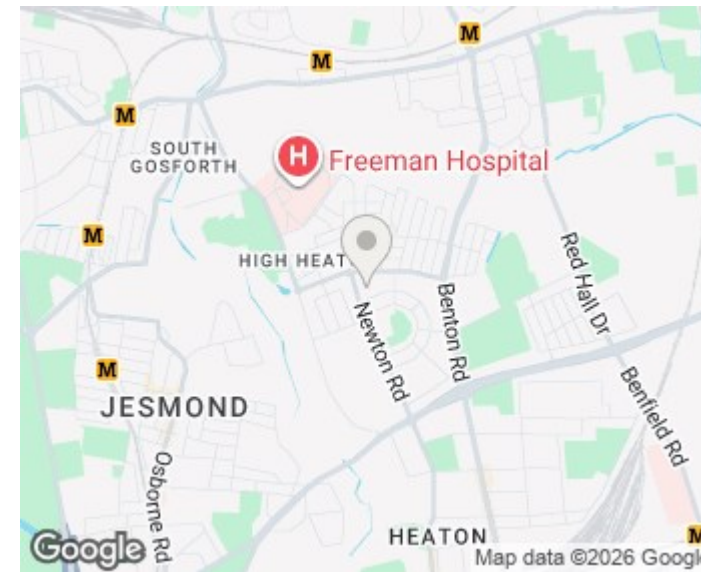
COUNCIL TAX BAND : A

EPC RATING : C



Total area: approx. 91.8 sq. metres (987.9 sq. feet)

All measurements are approximate and are for illustration only.
Plan produced using PlanUp.



Energy Efficiency Rating		Current	Potential
Very energy efficient - lower running costs			
(92 plus) A			
(81-91) B			
(69-80) C			
(55-68) D			
(39-54) E			
(21-38) F			
(1-20) G			
Not energy efficient - higher running costs			
		71	84
England & Wales		EU Directive 2002/91/EC	

Environmental Impact (CO ₂) Rating		Current	Potential
Very environmentally friendly - lower CO ₂ emissions			
(92 plus) A			
(81-91) B			
(69-80) C			
(55-68) D			
(39-54) E			
(21-38) F			
(1-20) G			
Not environmentally friendly - higher CO ₂ emissions			
England & Wales		EU Directive 2002/91/EC	