



WOODSTOCK ROAD, W4

£2,600 per month

Two double bedrooms
Top floor apartment
Large reception room
Centrally located
Turnham Green station
Energy Rating: d

@marshandparsons
marshandparsons.co.uk

MARSH &
PARSONS



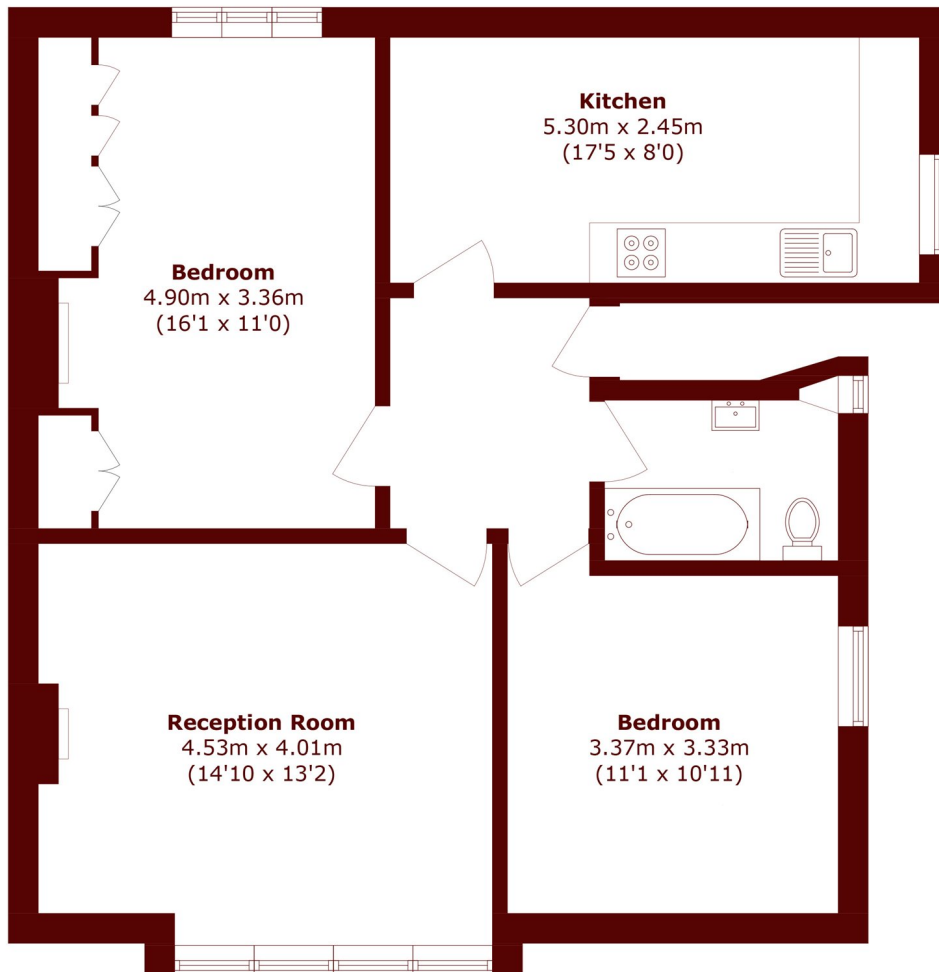
ABOUT THE PROPERTY

This beautifully maintained property is situated on one of Chiswick's most prestigious roads in the heart of Bedford Park, offering a spacious reception room with high ceilings, feature fireplace and dining area. Separate fitted kitchen with ample storage, two generous double bedrooms and a well appointed bathroom.

This breath-taking road is a short walk to Turnham Green station with both district and Piccadilly line for links into the city. Local amenities are close by on the unrivalled Chiswick High Road.



STEP INSIDE WOODSTOCK ROAD



Second Floor

Total area (approx.): 70.0 sq. m (753.5 sq. ft)

Chiswick
020 8629 0900

Energy Rating: D We aim to make our particulars both accurate and reliable. However, they are not guaranteed; nor do they form part of an offer or contract. If you require clarification on any points then please contact us, especially if you're traveling some distance to view. Please note that appliances and heating systems have not been tested and therefore no warranties can be given as to their good working order

MARSH &
PARSONS