



2 Bedroom | 1 Bathroom | 1 Reception Room

French Apartments | Lansdowne Road | Purley | CR8 2PH

Guide price £240,000

LOFT

French Apartments | Lansdowne Road | Purley | CR8 2PH

- Third floor apartment in the sought after French Apartments
- Large loft space that is fully boarded, great for storage
- Gated community with communal gardens and parking
- Purley station 5 minutes walk away
- Local amenities and restaurants less than a 5 minute walk away
- Allocated parking space included
- Use of residents gym, concierge and pavilion space

External

Third floor

Hallway

Bathroom

Gym

Pavilion

Car park

Bedroom 1

16'10 x 10'6 (5.13m x 3.20m)

Bedroom 2

16'8 x 8'2 (5.08m x 2.49m)

Living room

19'7 x 14'0 (5.97m x 4.27m)

Kitchen

8'3 x 5'5 (2.51m x 1.65m)

Loft

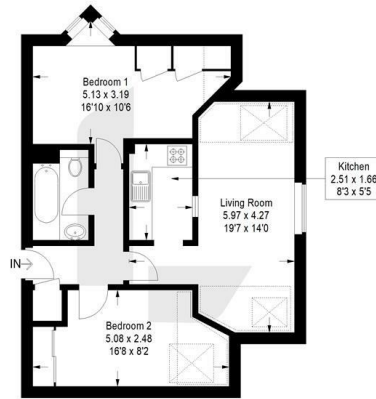
Communal gardens



French Apartments, CR8

Approximate Gross Internal Area
55.8 sq m / 601 sq ft

□ = Reduced headroom below 1.5 m / 5'0"



Third Floor

This plan is for layout guidance only. Not drawn to scale unless stated. Windows and door openings are approximate. Whilst every care is taken in the preparation of this plan, please check all dimensions, shapes and compass bearings before making any decisions reliant upon them. (D1311622)



EPC Rating:

23a High Street
Purley
Surrey
CR8 2AF
0208 660 8070
hello@loft-estates.co.uk

