

Apt 6, Longley Gardens, 148 Saddleworth Road

£110,000 Leasehold

2 bedroom duplex apartment situated within walking distance of Greetland village • Patio doors from dining room leading to outside decking area • Allocated parking space • Being sold with no onward chain and vacant possession • Modern building developed in 2013 • Ideal location for access in to Halifax or Huddersfield, and the M62 • Perfect for first time buyers, downsizers and investors

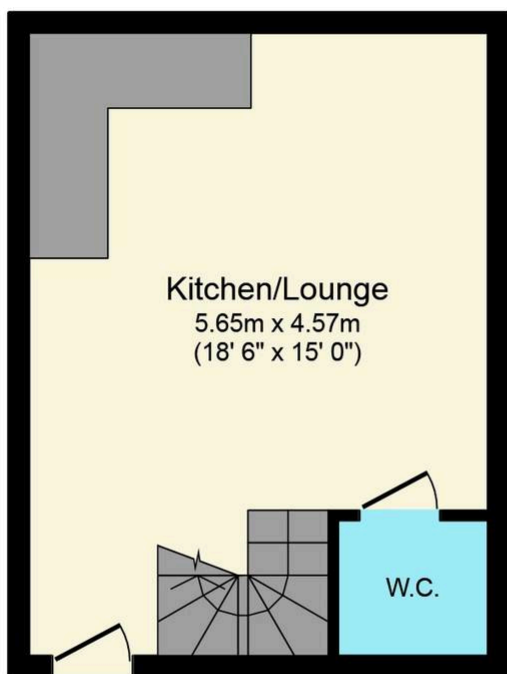




Welcome to this beautifully presented two-bedroom duplex apartment, perfectly positioned within walking distance of the charming Greetland village and offering an exceptional blend of contemporary living and every-day convenience. Set within a modern development built in 2013, this inviting home is thoughtfully designed to maximise space and comfort, making it an ideal choice for first-time buyers, downsizers, or investors seeking a stylish, low-maintenance property. Step inside to discover a bright and spacious open-plan living and dining area, where natural light pours in through the patio doors, creating a warm and welcoming atmosphere that is perfect for relaxing or entertaining. The well-appointed kitchen features sleek cabinetry and integrated appliances, ensuring both functionality and elegance for your culinary needs. Upstairs, you will find two generously sized bedrooms, each offering ample room for restful nights and flexible use, whether as a peaceful guest room, a productive home office, or a tranquil retreat for family members. The contemporary bathroom is finished to a high standard, providing a serene space to unwind at the end of the day. Additional features include an allocated parking space for your convenience, as well as the peace of mind that comes with vacant possession and no onward chain, allowing for a swift and hassle-free move. The location is truly outstanding, offering easy access into Halifax and Huddersfield for a wealth of shopping, dining, and leisure opportunities, while excellent transport links to the M62 ensure effortless commuting to surrounding towns and cities. Local amenities abound, with supermarkets, cafes, and restaurants just a short stroll away, and essential services such as schools, healthcare facilities, and parks within close proximity, making day-to-day living both comfortable and convenient. This property also benefits from its proximity to a range of attractions, including picturesque walking routes and vibrant community spaces, perfect for those seeking both relaxation and recreation. The apartment is being sold on a leasehold basis, and prospective buyers should be aware that a ground rent and service charge apply. Do not miss the chance to secure this superb duplex apartment in a sought-after location - enquire now to arrange your viewing and take the first step towards making this wonderful property your new home.

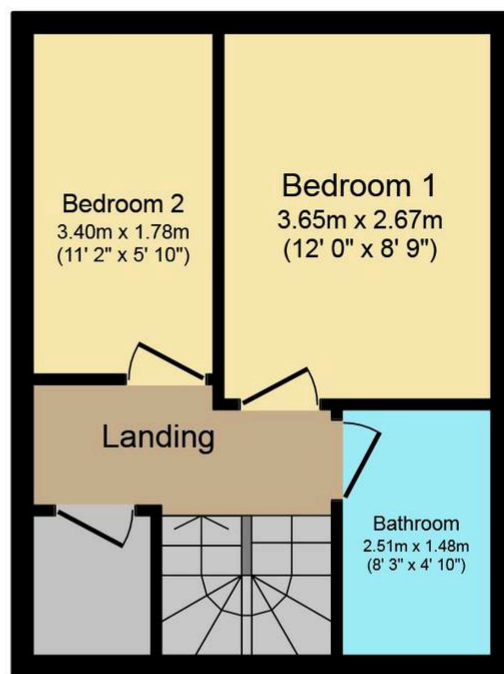






Ground Floor

Floor area 28.0 sq. m. (301 sq. ft.) approx



First Floor

Floor area 28.0 sq. m. (301 sq. ft.) approx

Total floor area 56.0 sq. m. (603 sq. ft.) approx

This Floor Plan is for illustration purposes only and may not be representative of the property. The position and size of doors, windows and other features are approximate. Unauthorized reproduction prohibited. © PropertyBOX

You can include any text here. The text can be modified upon generating your brochure.