



Smithy Street, E1

£425,000

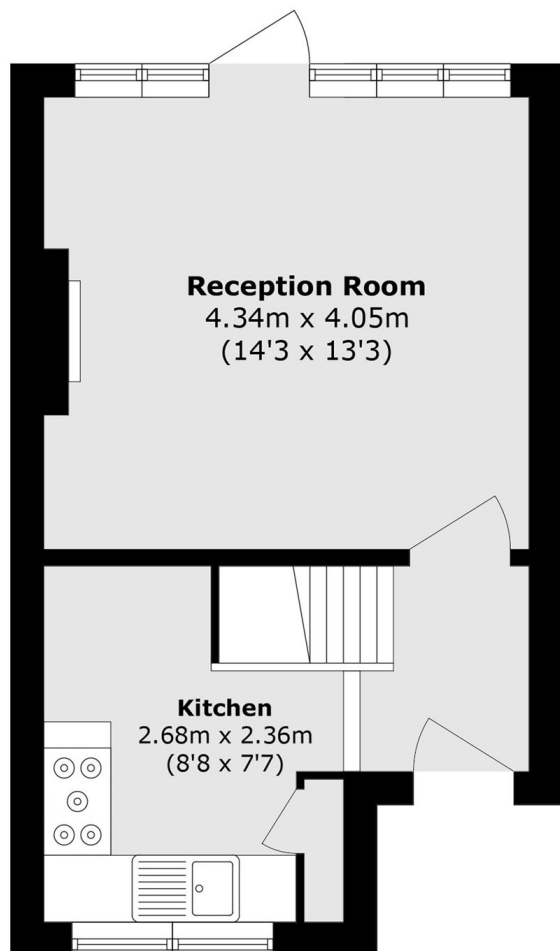
Two bedroom split level apartment with access to private garden. The property is access via its own private entrance, the ground floor has a large bright living room with ample space to dine, this area leads out onto the properties sizeable private garden. The kitchen is separate and fully integrated. The first floor has the properties two double bedrooms and the family bathroom along with further storage in the hall.

Located in a vibrant part of East London, the property benefits from convenient transport connections with Stepney Green and Whitechapel stations within easy reach, providing fast access to the City, Canary Wharf and beyond. For outdoor leisure, Victoria Park, Mile End Park and local green spaces are close by, while the surrounding area offers a wealth of shops, cafés, schools and community amenities.

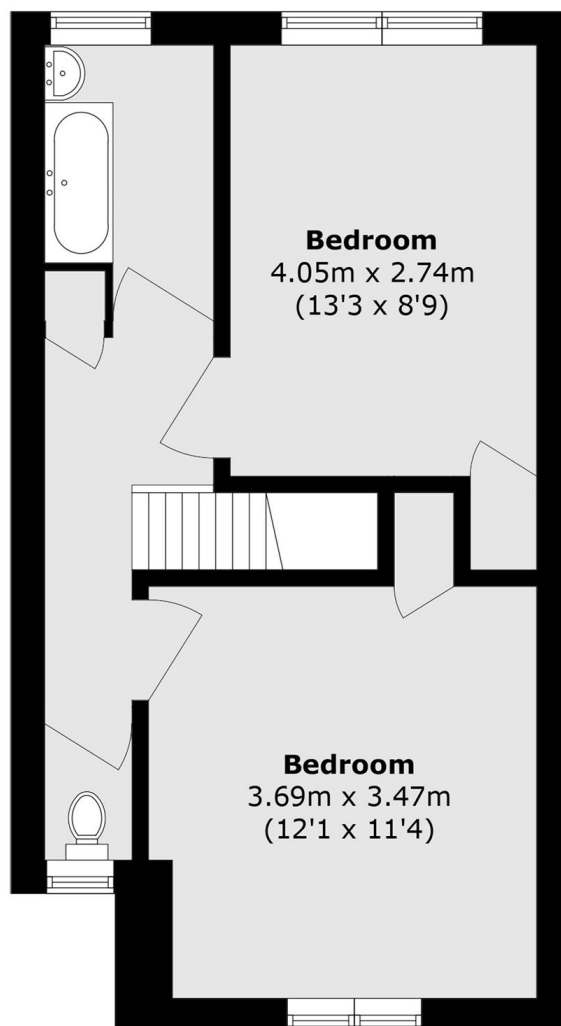
Features

- Two double bedrooms
- Private entrance
- Sizeable garden
- Sought after location
- Bright interiors

Smithy Street, London, E1



Ground Floor



First Floor

Total area (approx.): 66.2 sq. m (712.6 sq. ft)