



## Bishops Close, TW10

£2,750 Per calendar month

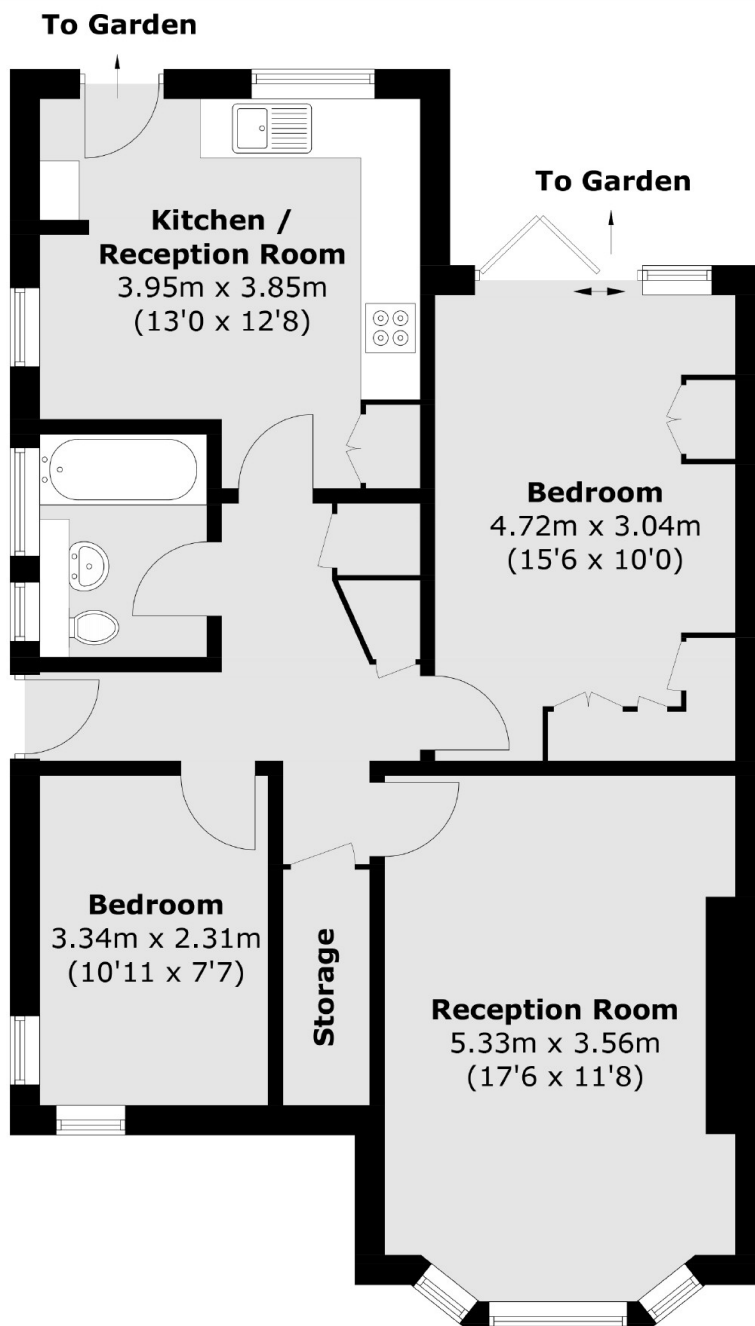
Ground floor maisonette in excellent condition, ideally located next to Ham Common and Richmond Park. The property has two good sized bedrooms, family bathroom, eat-in kitchen and spacious reception room.

Bishops Close is a quiet and sought after cul-de-sac located close to the gates of Richmond Park, The River Thames, Richmond Golf Club and many excellent local schools.

### Features

Ham Common  
Ground Floor  
Shared Garden  
Maisonette  
Two Double Bedrooms  
Excellent Condition

# Bishops Close, Ham, TW10



Total area (approx.): 72.4 sq. m 779.3 sq. ft)