



Hamilton Close, Rotherhithe, London
London

£775,000

OLIVER *OJ* JAUQUES
EST. 1986

1 Hamilton Close

London

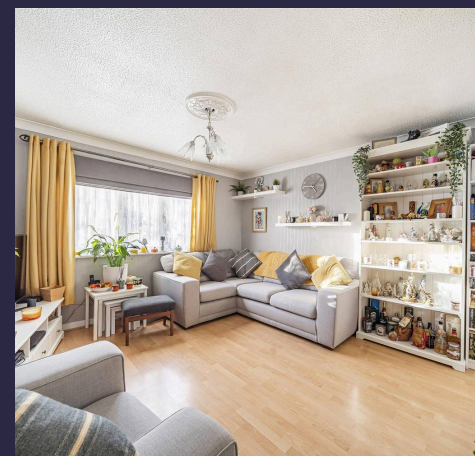
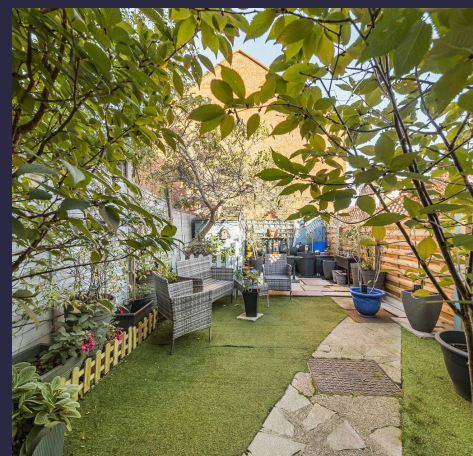
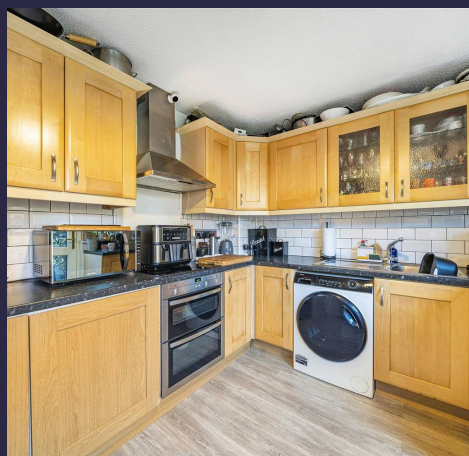
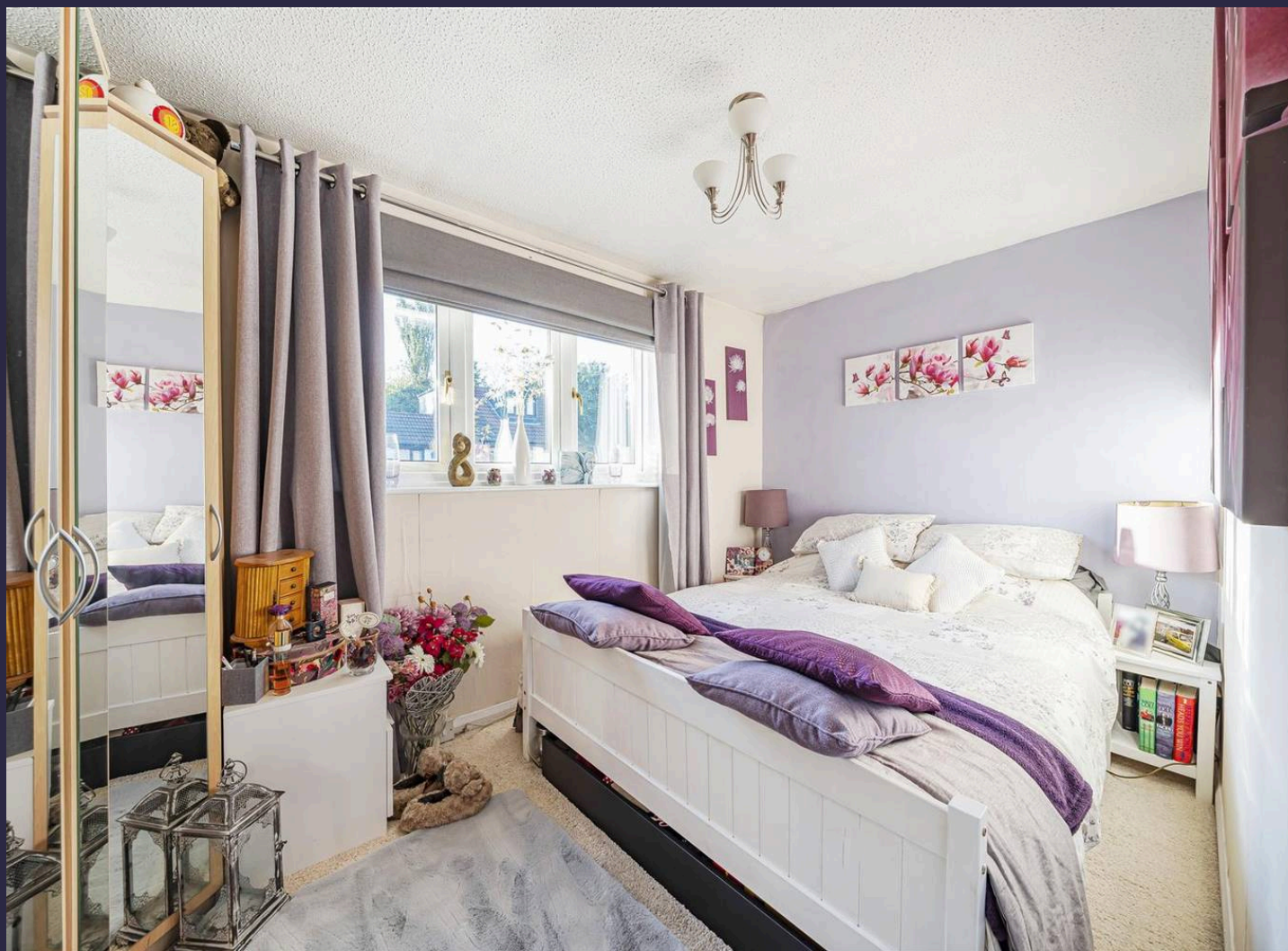
This modern freehold Town-house has accommodation spanning over three floors and extending to 891 Sq Ft. The property is nestled within a cul-de-sac location with front, side and rear gardens. Located in close proximity to Russia Dock Woodland and "Outstanding" Redriff Primary School.

Council Tax band: D

Tenure: Freehold

EPC Energy Efficiency Rating: C

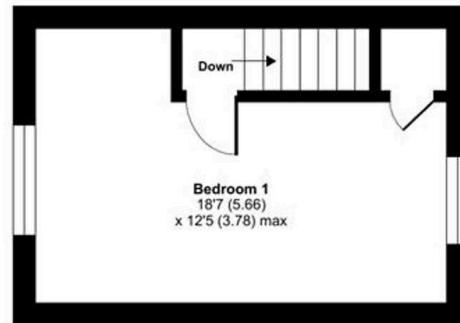
- Modern Town House in Canada Water
- Three Double Bedrooms
- Front Reception Room
- Kitchen/Dining Room overlooking the rear garden
- Front, Side and Rear Gardens
- 3yr Old Combi' Boiler and Double Glazing
- Close proximity to Russia Dock Woodland
- 0.6 Miles to Canada Water Station (Zone 2)
- Fitted Bathroom
- Viewing Highly Recommended



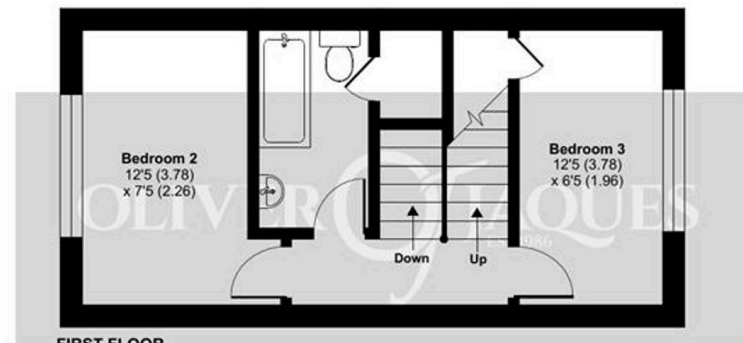
Hamilton Close, London, SE16

Approximate Area = 891 sq ft / 82.7 sq m

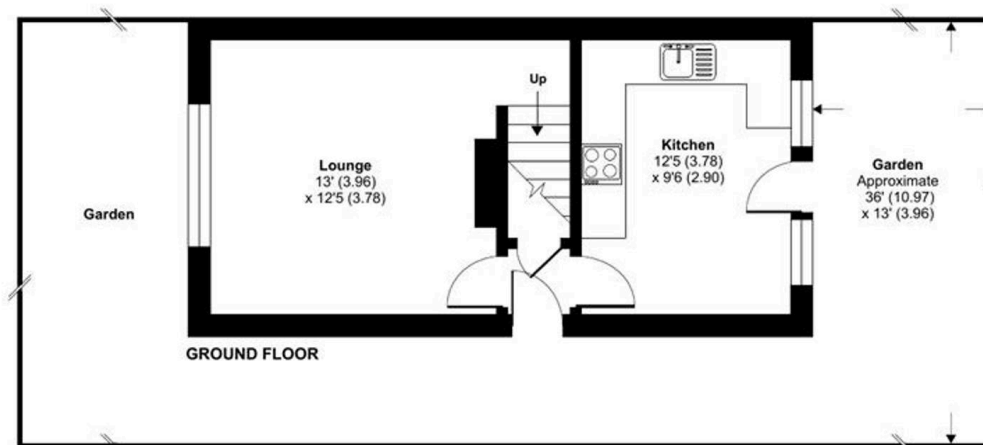
For identification only - Not to scale



SECOND FLOOR



FIRST FLOOR



GROUND FLOOR



Floor plan produced in accordance with RICS Property Measurement Standards incorporating International Property Measurement Standards (IPMS2 Residential). © n7cheom 2023. Produced for Oliver Jaques. REF: 1046473



Oliver Jaques

Oliver Jaques, 229-231 Lower Road - SE16 2LW

02072315050 • southeast@o-j.co.uk • o-j.co.uk/

Every care has been taken with the preparation of this brochure but it is for general guidance and complete accuracy can't be guaranteed. Prospective purchasers should seek clarification from their solicitor. The mention of any appliances fixtures or fittings does not imply they are in working order.