



Linkfield Road, TW7

£449,950

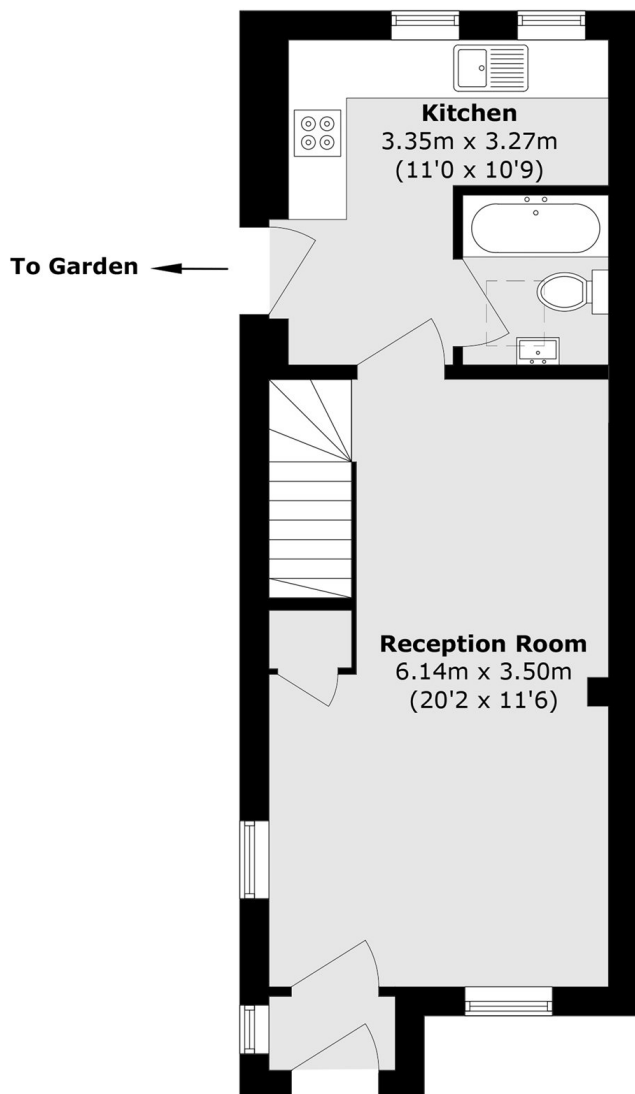
Offered to the market with no onward is this characterful two double bedroom end of terrace period cottage positioned on a sought after and popular road in Isleworth. Benefits include a front garden and pretty rear garden with side access. We love the large through lounge as you enter this charming house, offering a great space for entertaining family and friends.

Linkfield Road is ideally located and one of Isleworth's most popular roads. Isleworth mainline station is just a short walk away and has frequent train service to London Waterloo. The River Thames is within walking distance with picturesque tow path walks into St Margaret's and Richmond. There are a number of local schools, parks and amenities making it an ideal location for families!

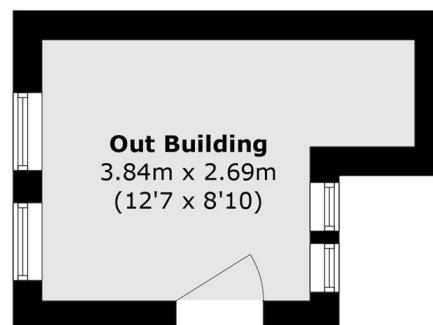
Features

- End of Terrace Cottage
- Period Property
- Two Bedrooms
- Pretty Garden
- Sought After Location
- No Chain

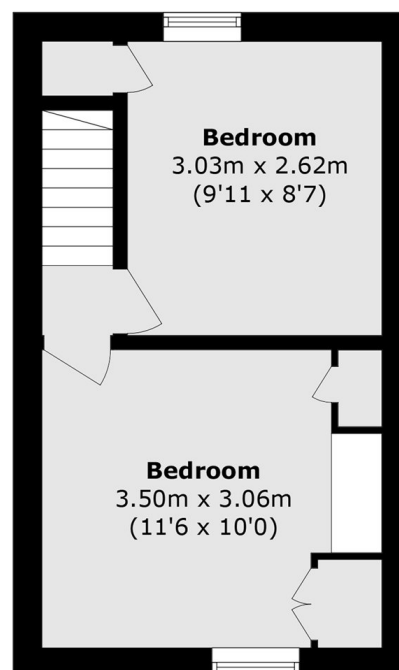
Linkfield Road, Isleworth, TW7



Ground Floor



Ground Floor



First Floor

Total area (approx.): 65.6 sq. m (706.1 sq. ft)