

Flat 14, 110 Romford Road, London – E15 4EH

£400,000 Leasehold

Exceptionally spacious two-bedroom apartment • Allocated parking space • Walking distance to Maryland Elizabeth Line Station • Easy access to Stratford Station and Westfield Stratford City • Ideal first-time purchase or investment opportunity • Ready to move into • Beautifully maintained throughout • Large open-plan reception/dining/kitchen room • Approximately 813 sq ft (75.6 sq m)



**HIGHCASTLE
ESTATES**

020 3026 4420
sales@hceuk.com

Spacious, modern 2-bed apartment in Stratford. Open-plan living, allocated parking, excellent transport links, shops and parks nearby. Ideal for professionals or first-time buyers.

Council Tax band: TBD

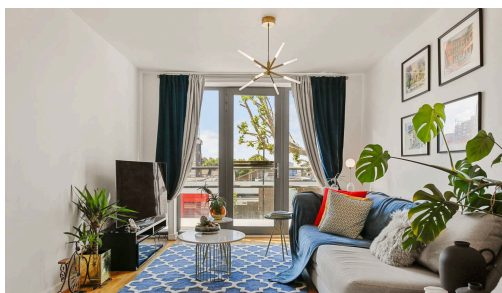
Tenure: Leasehold

EPC Energy Efficiency Rating: B

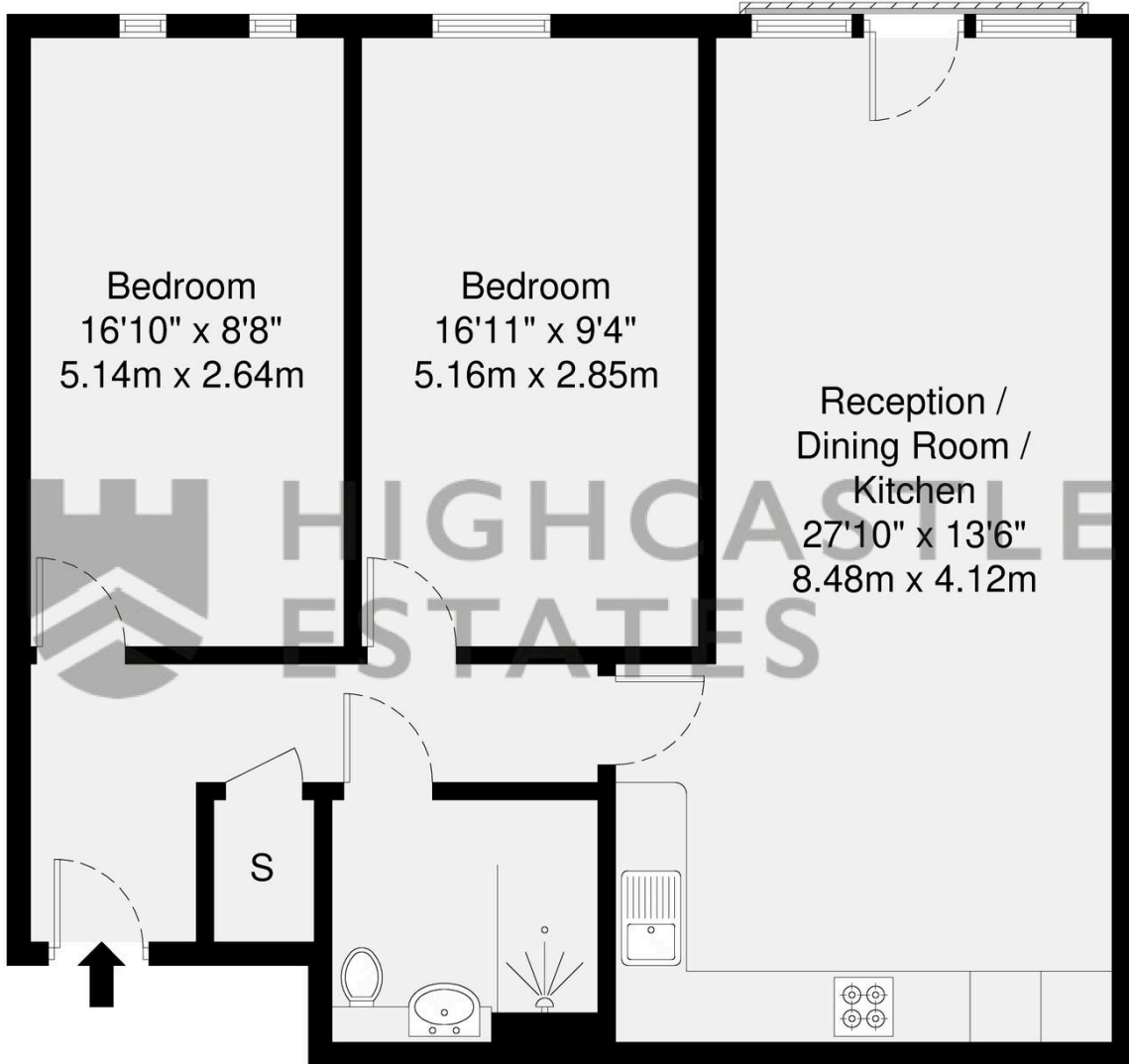
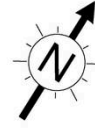
EPC Environmental Impact Rating: B



- Exceptionally spacious two-bedroom apartment
- Allocated parking space
- Walking distance to Maryland Elizabeth Line Station
- Easy access to Stratford Station and Westfield Stratford City
- Ideal first-time purchase or investment opportunity
- Ready to move into
- Beautifully maintained throughout
- Large open-plan reception/dining/kitchen room
- Approximately 813 sq ft (75.6 sq m)







Shower Room
7'5" x 6'6"
2.26m x 1.97m

Second Floor

GROSS INTERNAL AREA (GIA)
The footprint of the property
75.6 sq m / 813 sq ft

TOTAL STORAGE SPACE
Storage and wardrobe total area
1 sq m / 10 sq ft

EXTERNAL FEATURES
Garden, Balcony, Terrace, Verandah etc.
0.0 sq m / 0.0 sq ft

RESTRICTED HEAD HEIGHT
Limited use area under 1.5m
0.0 sq m / 0.0 sq ft

Disclaimer : Floorplan measurements are approximate and are for illustrative purposes only. While we do not doubt the floorplan accuracy and completeness, you or your advisors should conduct a careful, independent investigation of the property in respect of monetary valuation.

**Maison
VUE**

You can include any text here. The text can be modified upon generating your brochure.