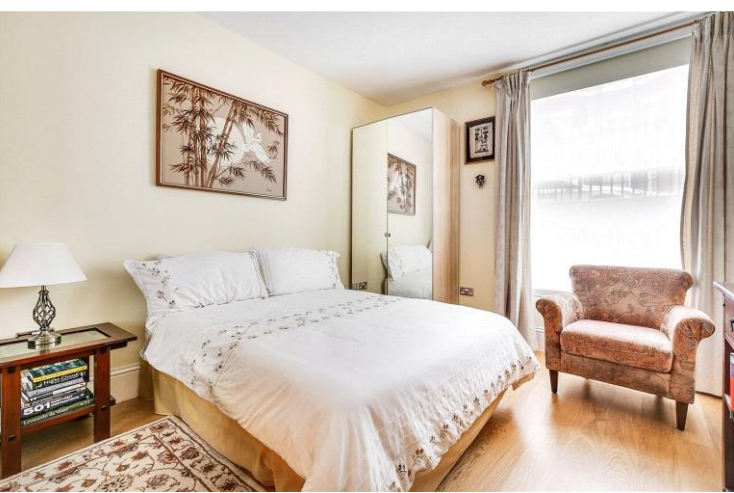




Nevern Square
Earls Court, SW5

CHESTERTONS





A generously sized two-bedroom apartment set on the lower ground floor of a mansion block, complete with lift access and a porter.

- 2 beds & 2 baths
- Over 900 square feet
- Communal garden access
- Onsite porter

£3,500 pcm

Additional tenant charges apply (fees apply to non-AST tenancies only)

Tenancy Agreement Fee: £300

References per Tenant/Guarantor: £60

Inventory check (approx. £100 – £250 inc. VAT)

chestertons.co.uk/property-to-rent/applicable-fees

Energy Efficiency Rating		Current	Potential
95-100	A		
81-94	B		
69-80	C	73	78
55-68	D		
39-54	E		
21-38	F		
1-20	G		

Not energy efficient - higher running costs

England, Scotland & Wales EU Directive 2002/91/EC

Minimum Term: 12 months
Deposit Required: £4,038.46
Local Authority: Kensington and Chelsea
Council Tax Band: G
EPC Rating: C
Furnished

Chestertons South Kensington Lettings

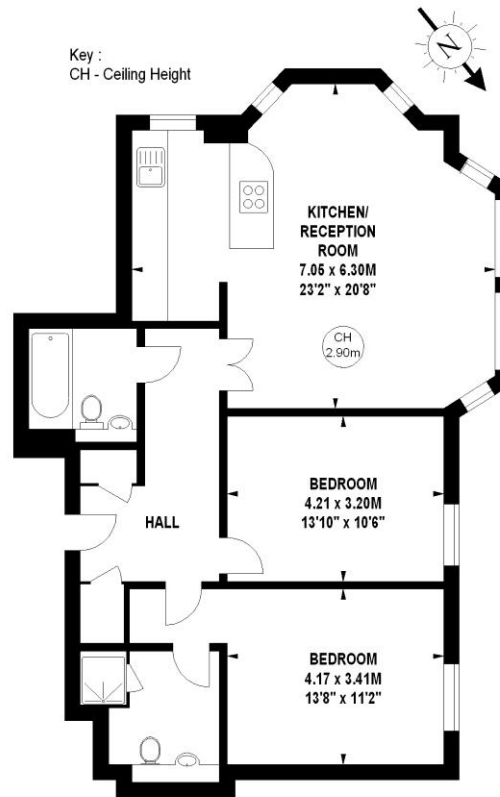
44-48 Old Brompton Road
 South Kensington
 London
 SW7 3DY

southkensingtonlettingsusers@chestertons.co.uk
 02075891244

Nevern Square, SW5

Approximate gross internal area

984 sq ft / 91.41 sq m



Lower Ground Floor

The floor plan is not to scale and measurements and areas shown are approximate and therefore should be used for illustrative purposes only. The plan has been prepared in accordance with the RICS code of Measuring Practice and whilst we have confidence in the information produced, it must not be relied on. If there is any aspect of particular importance, you should carry out or commission your own inspection of the property.
Copyright of FeaturePRO.

Chesterton UK Services Limited trading as Chestertons for themselves and for the vendor of this property whose agents they are, give notice that (i) these particulars do not constitute any part of an offer or contract, (ii) all statements contained within these particulars are made without responsibility on the part of Chestertons or the vendor, (iii) whilst made in good faith, none of the statements contained within these particulars are to be relied upon as a statement or representation of fact, (iv) any intending purchasers must satisfy themselves by inspection or otherwise as to the correctness of each of the statements contained within these particulars, (v) the vendor does not make or give either Chestertons or any person in their employment any authority to make or give representation or warranty whatsoever in relation to this property. Wide angle lenses may be used. ©Copyright Chestertons | Chesterton Global Ltd | Registered Office 40 Connaught Street, Hyde Park, London W2 2AB Registered Company Number 05334580.



This paper is
100% recyclable