



Guide Price
£400,000

Freehold

4x  1x  2x 

**Rugby Close,
Walderslade, Chatham,
Kent, ME5**

OVER 60?

Secure this property
for up to **59% less!**

Wards
Helping you move forwards



Main features

- Spacious semi-detached property
- Converted garage providing extra versatile living space
- Close to excellent schools, ideal for families
- Convenient access to major motorway links for easy commuting
- Walking distance to a range of local amenities

Accommodation

GROUND FLOOR

Entrance Hallway

Cloakroom

Utility Room

Lounge : 22'0 x 11'6 (6.71m x 3.51m)

Dining Area : 8'6 x 8'4 (2.59m x 2.54m)

Kitchen : 10'3 x 8'4 (3.13m x 2.54m)

FIRST FLOOR

Landing

Bedroom 1 : 12'8 x 10'4 (3.86m x 3.15m)

Bedroom 2 : 13'4 x 7'3 (4.07m x 2.21m)

Bedroom 3 : 10'4 x 9'4 (3.15m x 2.85m)

Bedroom 4 : 9'2 x 8'4 (2.80m x 2.54m)

Shower : 7'9 x 6'5 (2.36m x 1.96m)

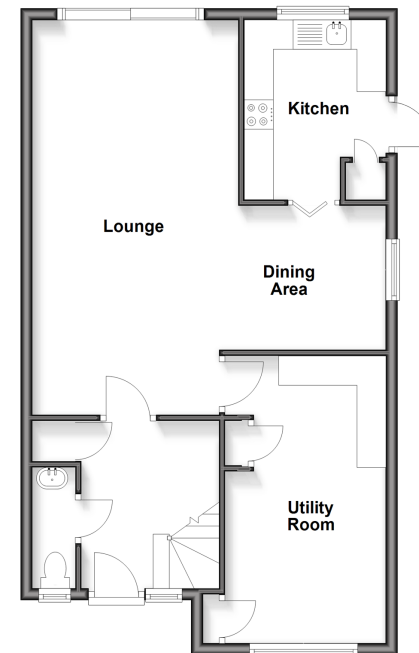
OUTSIDE

Driveway

Rear Garden

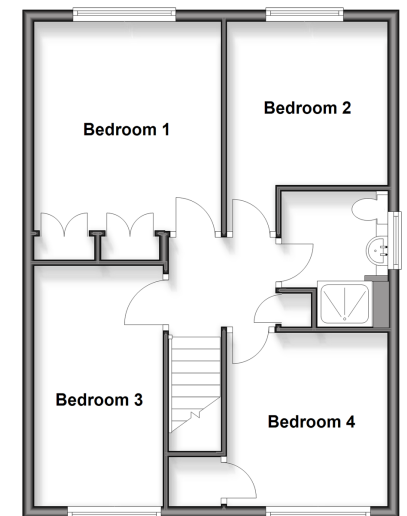
Ground Floor

Approx. 62.0 sq. metres (667.3 sq. feet)



First Floor

Approx. 50.3 sq. metres (541.4 sq. feet)



Call Walderslade - 01634 865661 ■ wardsofkent.co.uk

- Legal advice should be taken to verify fixtures/fittings, planning, alterations and/or lease details
- Appliances & services are untested, dimensions are approximate and floor plans are not to scale
- Through a Homewise Home For Life Plan people aged 60+ can secure this property for up to 59% less, by purchasing a Lifetime Lease



12141919/20260307/ML/ALH