



26, Aston Road, Ware  
SG11 1PZ  
£535,000



[stevenoates.com](http://stevenoates.com)



## 26 Aston Road, Standon, Ware, SG11 1PZ

Set on an impressive corner plot, this beautifully presented 3 bedroom semi-detached house offers generous living space, extensive parking, and a superb rear garden measuring approximately 50'x39'. Inside, the property features three good-sized bedrooms, including a principal bedroom with an en-suite shower room. The ground floor boasts two versatile reception rooms, a contemporary kitchen/breakfast room, and a convenient utility room with cloakroom. Further benefits include uPVC double glazing, gas central heating and a particularly spacious and well-maintained rear garden—perfect for outdoor entertaining or family life. A wonderful opportunity to acquire a well-proportioned home in the desirable village of Standon.

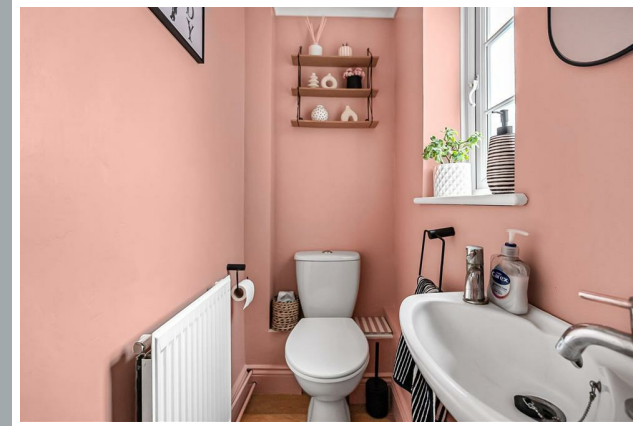
The property is located towards the end of this quiet residential cul de sac in the heart of the sought after village of Standon. The village offers a thriving community with excellent local facilities including 2 village stores, a choice of pubs, tennis club and a village primary school. The nearby towns of Hertford, Ware and Bishops Stortford are all within a short drive offering more extensive shops, restaurants and mainline train stations serving London, along with a choice of excellent schooling for all ages.



70 Fore Street, Hertford, Hertfordshire, SG14 1BY



70 Fore Street, Hertford, Hertfordshire, SG14 1BY



70 Fore Street, Hertford, Hertfordshire, SG14 1BY





70 Fore Street, Hertford, Hertfordshire, SG14 1BY



70 Fore Street, Hertford, Hertfordshire, SG14 1BY



70 Fore Street, Hertford, Hertfordshire, SG14 1BY

## Approximate Gross Internal Area 1192 sq ft - 111 sq m

Ground Floor Area 633 sq ft – 59 sq m

First Floor Area 559 sq ft – 52 sq m



Floor plan produced in accordance with RICS Property Measurement 2nd Edition. Although Pink Plan Ltd ensures the highest level of accuracy, measurements of doors, windows and rooms are approximate and no responsibility is taken for error, omission or misstatement. These plans are for representation purposes only and no guarantee is given on the total square footage of the property within this plan. The figure icon is for initial guidance only and should not be relied on as a basis of valuation.



These particulars, whilst believed to be accurate are set out as a general outline only for guidance and do not constitute any part of an offer or contract. Intending purchasers should not rely on them as statements of representation of fact, but must satisfy themselves by inspection or otherwise as to their accuracy. No person in this firm's employment has the authority to make or give any representation or warranty in respect of the property.



[stevenoates.com](http://stevenoates.com)