

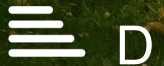
ENGLANDS



14 The Regents Norfolk Road

Edgbaston, Birmingham, B15 3PP

£549,000





## PROPERTY DESCRIPTION

A spacious top floor apartment set in The Regents, an exclusive development set over 5 storeys and containing just 15 large apartments, all set within beautifully maintained private grounds with communal parking.

The Regents is situated on Norfolk Road close to the junction with Augustus Road and being very conveniently located for Edgbaston Village, Harborne and Birmingham City Centre. The Queen Elizabeth Hospital and Birmingham University are also within easy reach.

The property has the benefit of a light and spacious open plan kitchen/dining room/living room with balcony off, inner hall with utility cupboards, three bedrooms with fitted wardrobes, one with en suite, bathroom and garage in separate block. There is underfloor heating throughout the property. The well-proportioned, improved accommodation really does warrant a viewing to fully appreciate the space and layout of this delightful apartment.

Communal entrance hall having recessed ceiling spotlights and stairs rising to the upper floors and lift for access to the upper floors.



### TOP FLOOR WITH LIFT ACCESS

Good sized storage cupboard and wooden entrance door with spy hole leading into:

### ENTRANCE HALL

2.79m max x 2.12m max excluding cupboards (9'1" max x 6'11" max excluding cupboards)

Having wooden style flooring, recessed ceiling spotlights and fitted storage cupboards with sliding mirrored doors.

### LIVING ROOM

5.32m max into shelving x 4.63m max (17'5" max into shelving x 15'2" max)

Having wooden style flooring, recessed fluorescent strip lighting, UPVC double glazed window, built in shelving, "Automist" intelligent targeted fire suppression system sensor and further UPVC double glazed door leading to balcony having views over the communal grounds.

### KITCHEN/DINING ROOM

9.96m max x 4.21m max (32'8" max x 13'9" max)

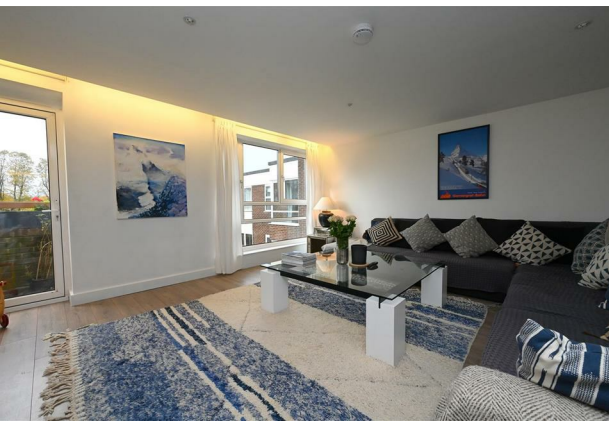


### DINING ROOM

Having wooden style flooring, recessed fluorescent strip lighting, ceiling light point, two UPVC double glazed windows and built-in wine cooler with inset above.

### KITCHEN

Having wooden style flooring, recessed ceiling spotlights, a range of wall and base units with marble style worktop over, five ring induction hob with extractor fan over, partial tiling to walls, UPVC double glazed window, 1 1/2 bowl undermount sink with mixer tap over, double electric oven and integrated dishwasher, fridge and freezer. Peninsular unit with storage underneath and overhead lights.



### INNER HALL

Having wooden style flooring, recessed ceiling spotlights, built in airing cupboard and further utility cupboard housing pressure tank.

## BEDROOM ONE

4.86m max x 3.45m max excluding wardrobes (15'11" max x 11'3" max excluding wardrobes)

Having wooden style flooring, recessed ceiling spotlights, two UPVC double glazed window and fitted wardrobes. Frosted glass door leading to:

## ENSUITE

Having tiled flooring, recessed ceiling spotlights, extractor fan, hand wash basin with mixer tap over and storage underneath with marble effect worktop, low flush WC, UPVC double glazed obscured window and towel rail. Step up to freestanding oval bathtub with separate tap and fully tiled large walk in shower with drench showerhead.

## BEDROOM TWO

3.78m excluding wardrobes x 3.35m max (12'4" excluding wardrobes x 10'11" max)

Having wooden style flooring, recessed ceiling spotlights, UPVC double glazed window and fitted wardrobes.

## BEDROOM THREE

4.07m max x 2.39m max excluding wardrobes (13'4" max x 7'10" max excluding wardrobes)

Having wooden style flooring, recessed ceiling spotlights, UPVC double glazed window and fitted wardrobes with mirrored doors.

## BATHROOM

Having frosted glass door, tiled flooring, recessed ceiling spotlights, hand wash basin with mixer tap over and storage underneath, shaving plug, bathtub with mixer tap over and wall mounted showerhead, partial tiling to walls, UPVC double glazed obscured window and towel rail.

## OUTSIDE

The property is set in splendid communal grounds with an impressive range of evergreen shrubs and trees as well as flowers and lawns.

There is a double garage set in a separate block.

## ADDITIONAL INFORMATION

Tenure: We are advised the property is leasehold with 134 years remaining and a service charge currently of £5203.70 per annum.

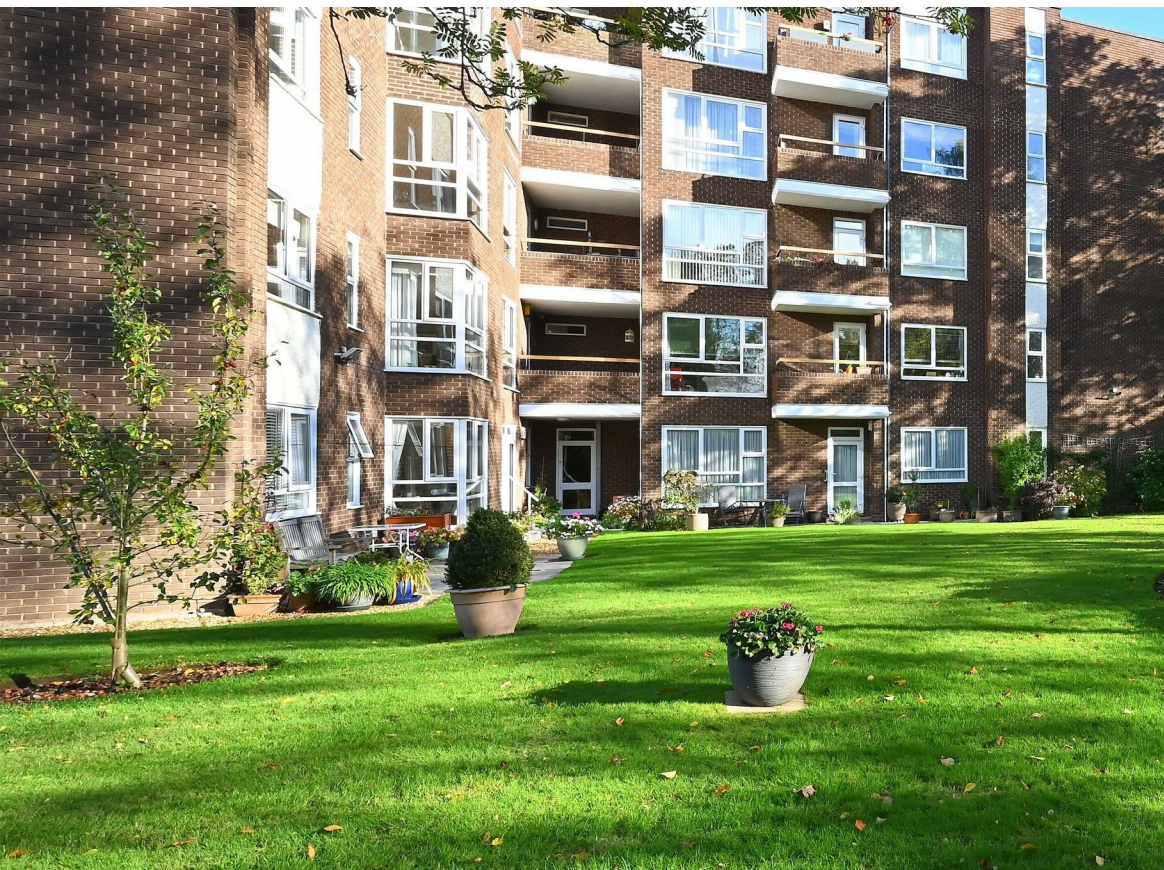
Council Tax Band: E

Underfloor heating throughout the property.

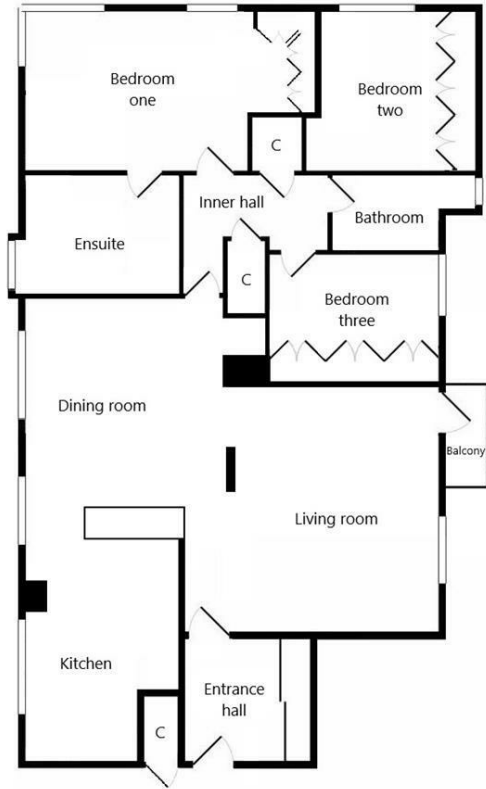






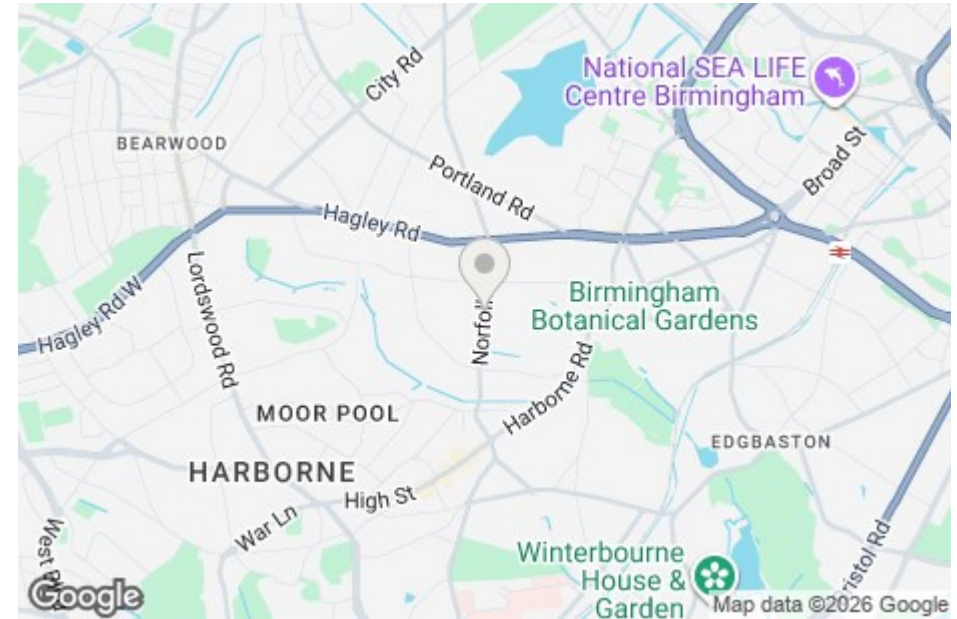


## Floor Plan

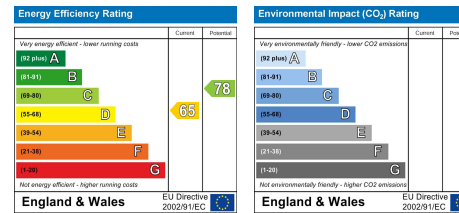


Measurements are approximate. Not to scale. Illustrative purposes only.

## Area Map



## Energy Efficiency Graph



### DISCLAIMER NOTICES

“The agent has not tested any apparatus, equipment, fixture, fittings or services, and so does not verify they are in working order, fit for their purpose, or within ownership of the sellers, therefore the buyer must assume the information given is incorrect. Neither has the agent checked the legal documentation to verify legal status of the property or the validity of any guarantee. A buyer must assume the information is incorrect, until it has been verified by their own solicitors. The measurements supplied are for general guidance, and as such, must be considered as incorrect. A buyer is advised to re-check the measurements themselves before committing themselves to any expense. Nothing concerning the type of construction, or condition of the structure is to be implied from the photograph of the property. The sales particulars may change in the course of time, and any interested party is advised to make final inspection of the property prior to exchange of contracts.”

### Misrepresentation Act 1967

“These details are prepared as a general guide only and should not be relied upon as a basis to enter into a legal contract, or to commit expenditure. An interested party should consult their own surveyor, solicitor or other professional before committing themselves to any expenditure or other legal commitments. If any interested party wishes to rely upon any information from the agent, then a request should be made, and specific written confirmation can be provided. The agents will not be responsible for any verbal statement made by any member of staff, as only a specific written confirmation should be relied upon. The agent will not be responsible for any loss other than when specific written confirmation has been requested.”