

23 Glenwood Walk
Chapel Park
Newcastle Upon Tyne
NE5 1SS

Offers Over
£270,000

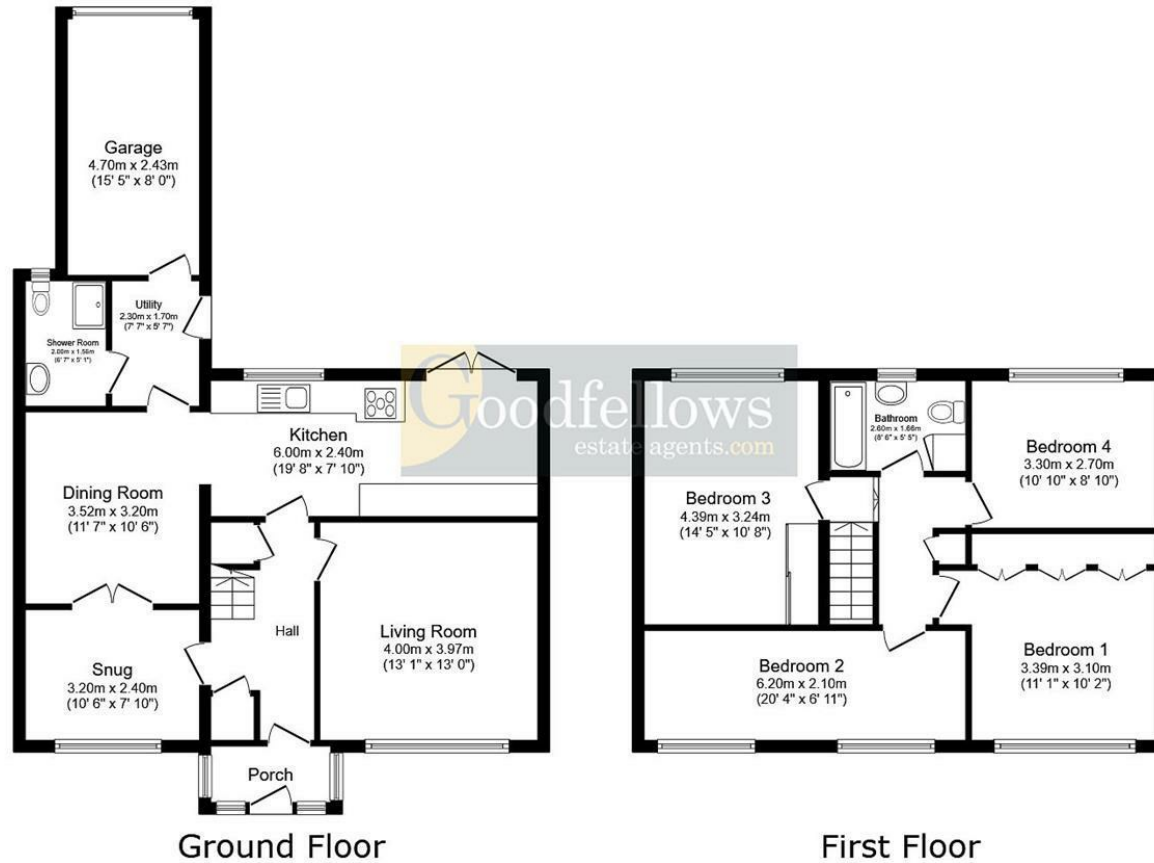


23 Glenwood Walk
Chapel Park
Newcastle Upon Tyne
NE5 1SS

- Extended 4 bedroom semi detached house
- South facing rear garden
- Good size kitchen
- Gas central heating
- Lounge and separate snug
- Pedestrianised walkway
- Downstairs shower room
- Driveway and garage
- Sealed unit double glazed windows
- Utility area







Total floor area: 143.9 sq.m. (1,549 sq.ft.)

This floor plan is for illustrative purposes only. It is not drawn to scale. Any measurements, floor areas (including any total floor area), openings and orientations are approximate. No details are guaranteed, they cannot be relied upon for any purpose and do not form any part of any agreement. No liability is taken for any error, omission or misstatement. A party must rely upon its own inspection(s).



EPC Rating: C
Council Tax Band: C

Whilst every care has been taken to prepare these particulars, they are for guidance purposes only. All measurements are approximate and whilst every care has been taken to ensure their accuracy, they should not be relied upon and potential buyers/tenants are advised to recheck the measurements. The agent has not tested any equipment, services, fixtures or fittings and makes no representation regarding their condition.

CONTACT

128 The Roman Way, West Denton,
Newcastle upon Tyne, NE5 5AD

E:
westdenton@goodfellowsestateagents.com
T: 0191 2677500

