



West Wickham Road, Balsham, Cambridge £365,000 **Freehold**

KH Kevin
Henry

Key Features

2 1 D C

- Beautifully presented
- Original 1700's period features
- Excellent living space
- Two bedrooms
- Stylish bathroom

Charming Period Cottage in the Heart of Balsham.

This beautifully presented period cottage is full of original features and character, offering a warm and welcoming atmosphere from the moment you step inside. The spacious lounge is a true highlight, with an open fireplace creating a cosy centrepiece. Adjoining the stylish, well-equipped kitchen is a lovely dining room-perfect for everyday living and entertaining. A modern ground-floor bathroom completes the downstairs accommodation, adding to the home's convenience and comfort.

From the rear lobby, stairs lead to a generous landing area ideal as a home office or reading nook. The first floor also offers



two well-proportioned bedrooms filled with natural light.

Outside, the property boasts a large, private south-west facing garden-perfect for relaxing or entertaining. Additionally, a versatile studio with power provides excellent space for hobbies, working from home, or additional storage.

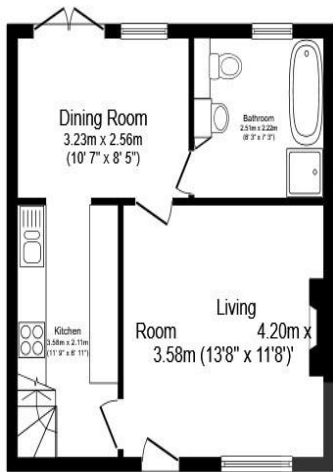
Located in the sought-after village of Balsham, known for its strong community spirit and attractive surroundings, this is a rare opportunity to own a character home in a highly desirable location.

Balsham lies approximately 7 miles from the thriving market town of Haverhill and is 10 miles equidistant from Newmarket, Cambridge and Saffron Walden. The village offers its own primary school, post office/stores, family butcher, fine church, two inns and recreation ground with children's play area adjacent. More extensive shopping and schooling facilities are available in the nearby village of Linton and for the commuter there is a train service to London via Whittlesford or Audley End, and the M11 motorway can be accessed via Duxford (Junction 10) or Stump Cross (Junction 9).

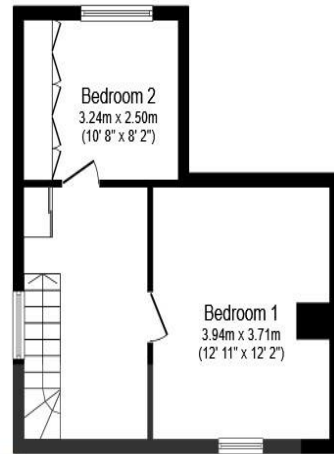
Lounge
4.20m x 3.58m
13'8" x 11'8"

Dining Room
3.23m x 2.58m

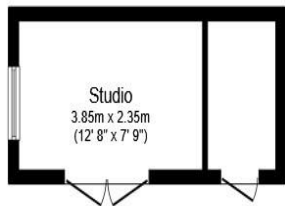




Ground Floor



First Floor



Outbuilding

This floor plan is for illustrative purposes only. It is not drawn to scale. Any measurements, floor areas (including any total floor area), openings and orientation are approximate. No details are guaranteed, they cannot be relied upon for any purpose and they do not form part of any agreement. No liability is taken for any error, omission or misstatement. A party must rely upon its own inspection(s). Powered by www.focalagent.com

10'7" x 8'5"

Kitchen
3.58m x 2.11m
11'9" x 6'11"

Bathroom

Rear Lobby

Landing

Bedroom One
3.94m x 3.71m
12'11" x 12'2"

Bedroom Two
3.24m x 2.50m
10'8" x 8'2"

Garden

Front
Driveway parking. Access to rear.

To view this property call Kevin Henry on:
01799 513632

Selling your property?

Contact us to arrange a FREE home valuation.

 01799 513632

 1 Market Street, SAFFRON WALDEN, Essex, CB10 1JB

 sales@kevinhenry.co.uk

 www.Kevinhenry.co.uk



 SCAN ME



Kevin Henry is a trading name of Sharman Quinney Holdings Limited which is registered in England and Wales under company number 4174227, Registered Office is Cumbria House, 16-20 Hockliffe Street, Leighton Buzzard, Bedfordshire, LU7 1GN. VAT Registration Number is 500 2481 05.

1: These particulars do not constitute part or all of an offer or contract. 2: The measurements indicated are supplied for guidance only and as such must be considered incorrect. 3: Potential buyers are advised to recheck the measurements before committing to any expense. 4: Kevin Henry has not tested any apparatus, equipment, fixtures, fittings or services and it is the buyers interests to check the working condition of any appliances. 5: Kevin Henry has not sought to verify the legal title of the property and buyers must obtain verification from their legal representative. 6: Intending purchasers will be asked to produce identification documentation at a later stage and we would ask your co-operation in order that there will be no delay in agreeing the sale. Ref: SAF103528 - 0005

