

Need a Mortgage in principle to make offers? Call us now for quick assistance!
0121 775 0101



Do you need to sell? Start your journey now! Call us we can help.
0121 775 0101



SCAN FOR MORE INFO
SIZE - 1027 Sq Ft
TENURE - Freehold
COUNCIL TAX - Solihull Metropolitan Borough Council - C
BROADBAND - Upload Max 220Mbps Download Max 1800Mbps
MOBILE SERVICES - EE - 87%, 2 - 82%, Vodafone - 82%, 02 - 80%
EPC - D - 61
PARKING - Off Street Parking
FLOODRISK - Very Low
SERVICES - Mains
COVENANTS - N/A

14 Ansley Way
Solihull, B92 9PA
Offers in the Region of £250,000

This charming end terraced property presents an excellent opportunity for first-time buyers or investors seeking to expand their property portfolio. In summary, this delightful home offers a blend of comfort and space, making it a must-see for those looking to establish themselves in the vibrant Solihull area.

FEATURES

- End Terraced Family Home
- Bright Lounge
- Modern Breakfast Kitchen
- Conservatory
- Three Good Sized Bedrooms
- Family Bathroom & Separate W.C.
- Private South Facing Rear Garden
- Off Road Parking
- Convenient Location

Are you an investor interested in expanding your portfolio?

Call 0121 775 0101 to provide your investment criteria for alerts.



SCAN TO VIEW OUR WEEKLY FILMS & SUBSCRIBE

Sneak Peeks

Every week, we unveil "Sneak Peeks," a feature showcasing exclusive properties before they hit Rightmove and other platforms.

The Landlord Club

Join our Landlord Club for weekly updates on legislation, market trends, and our Letting Director's 'Investment Pick of the Week' for optimal ROI.

HTSPMD

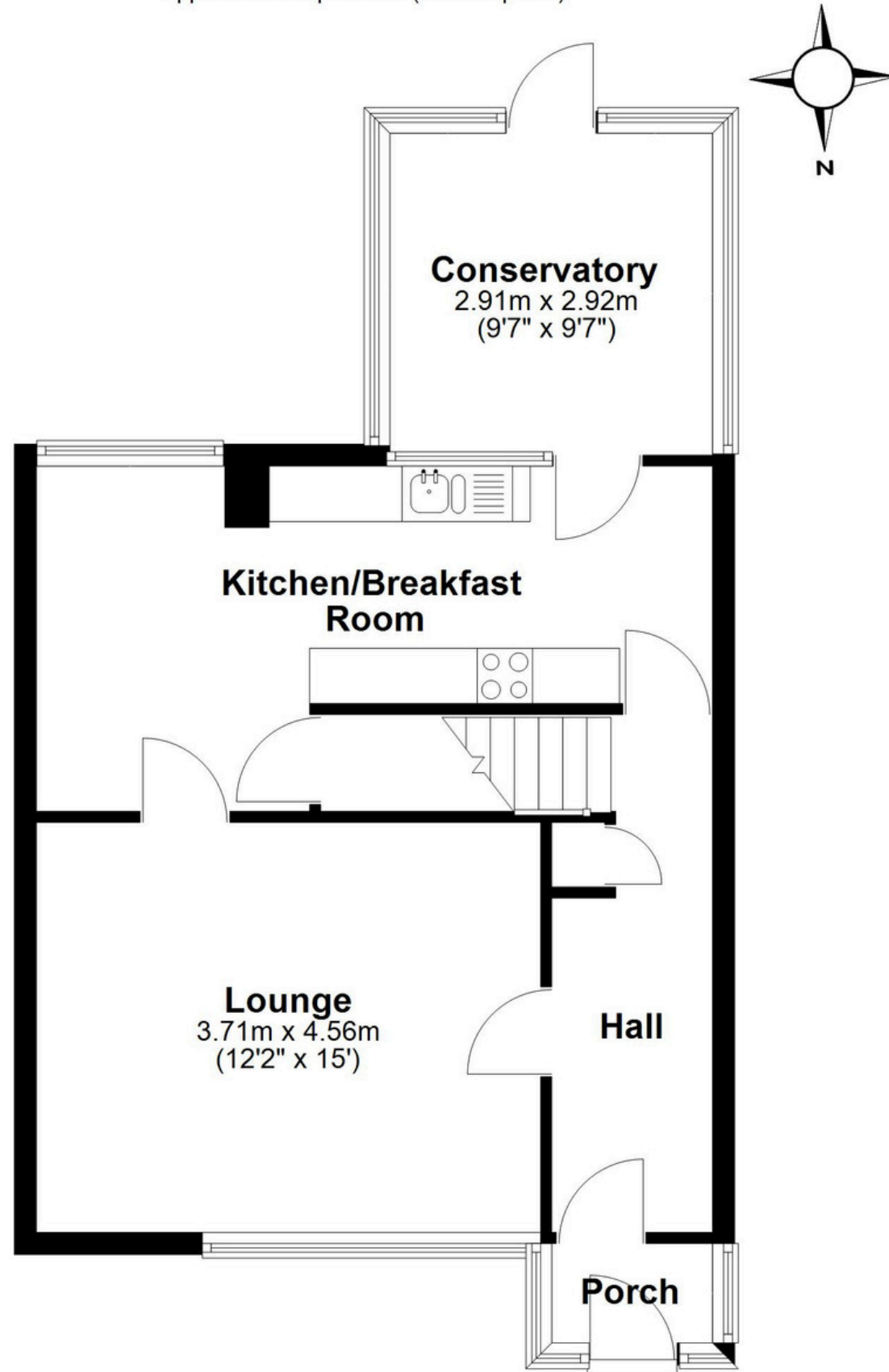
Tune into 'How's The Solihull Property Market Dom' weekly for a quick, insightful snapshot of the market.

The Mortgage Update

Get weekly insights and the best deals with our Mortgage Update, your shortcut to navigating the complex mortgage landscape confidently.

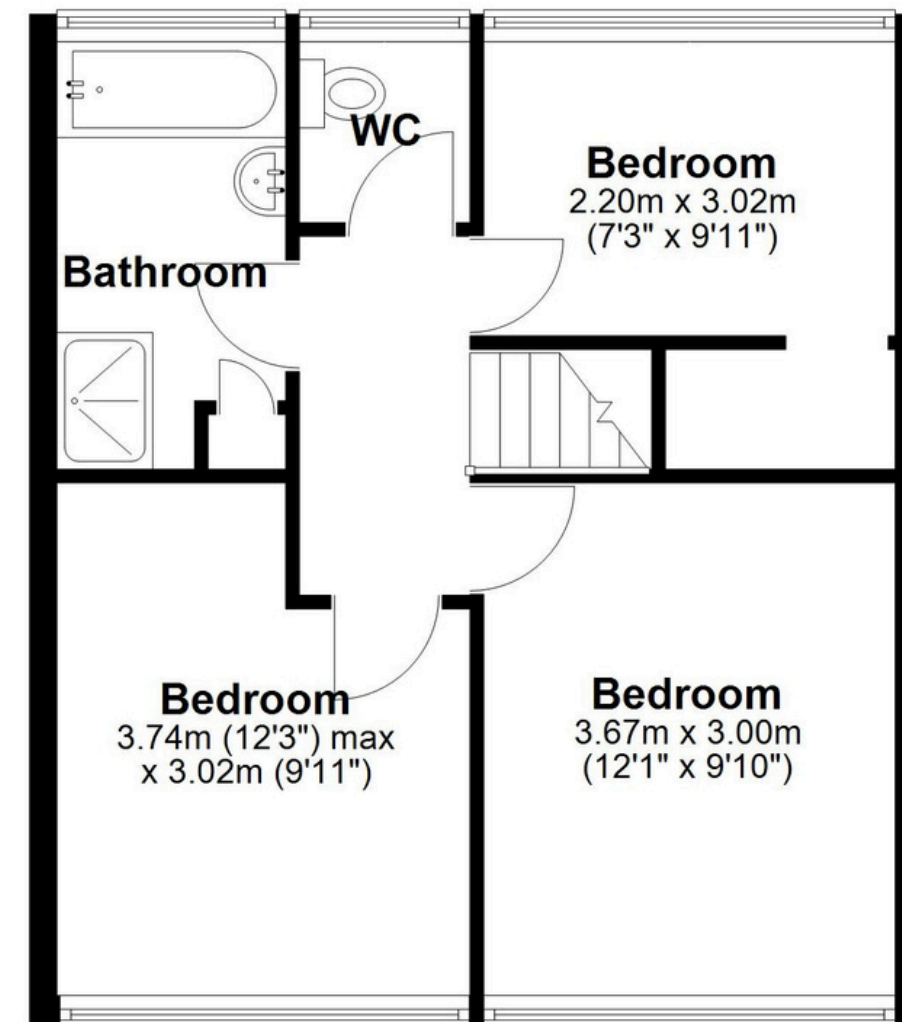
Ground Floor

Approx. 52.6 sq. metres (566.6 sq. feet)



First Floor

Approx. 42.8 sq. metres (460.8 sq. feet)



Total area: approx. 95.4 sq. metres (1027.4 sq. feet)

This floor plan is for illustration purposes only, this is not intended to be a measured/scaled survey or comply with RICS guidelines. All measurements (including total floor area) openings, orientation and floor area are approximate. No details are guaranteed, they cannot be relied upon for any purpose and do not form part of any agreement. A party must rely upon its own inspection(s). No responsibility is taken for any error, omission, or mis-statement.

Plan produced using PlanUp.