



ARCH LIVING

www.archliving.co.uk



22 Myrtle Road, Leicester, LE2 1FT

£1,195 Per calendar month

A well-presented and generously proportioned two-bedroom family home situated on Myrtle Street, Leicester, ideally positioned just off the highly sought-after Evington Road and London Road areas.

This property benefits from an excellent location, offering immediate access to a wide range of local amenities including shops, supermarkets, cafes, and restaurants, as well as convenient transport links into Leicester City Centre and surrounding areas. The area is particularly popular with families and professionals due to its vibrant atmosphere and accessibility.



127 Clarendon Park Road, Leicester, Leicestershire LE2 3AJ
T: 0116 270 6699
lettings@archliving.co.uk

ARCH

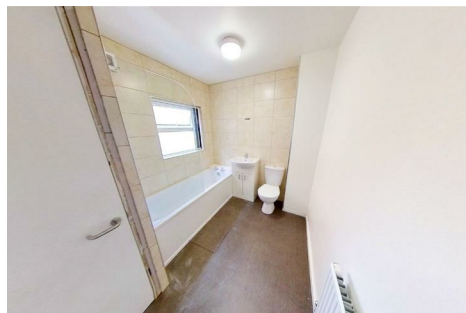
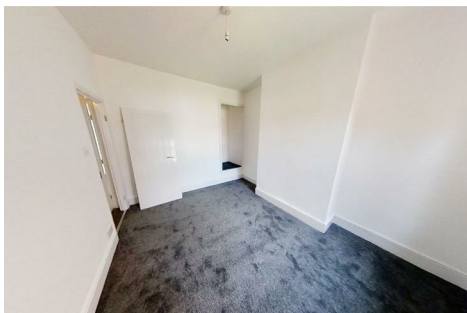


ARCH LIVING

www.archliving.co.uk

Energy Efficiency Rating		Current	Potential
Very energy efficient - lower running costs			
(92 plus) A			
(81-91) B			
(69-80) C			
(55-68) D			
(39-54) E			
(21-38) F			
(1-20) G			
Not energy efficient - higher running costs			
England & Wales		EU Directive 2002/91/EC	

Environmental Impact (CO ₂) Rating		Current	Potential
Very environmentally friendly - lower CO ₂ emissions			
(92 plus) A			
(81-91) B			
(69-80) C			
(55-68) D			
(39-54) E			
(21-38) F			
(1-20) G			
Not environmentally friendly - higher CO ₂ emissions			
England & Wales		EU Directive 2002/91/EC	



127 Clarendon Park Road, Leicester, Leicestershire LE2 3AJ
T: 0116 270 6699
lettings@archliving.co.uk

ARCH