



Grass Meers Drive, Whitchurch

£300,000



- **Energy Rating - D**
- **Garage Conversion**
- **Good Size Lounge**
- **Ample Off Street Parking**

- **Three Bedroom Family Home**
- **Kitchen / Diner With Appliances**
- **Westerly Facing Rear Garden**
- **Gas Central Heating & Upvc Double Glazing**

Located in a highly convenient area, this well-presented family home is within walking distance of local amenities, a nursery, primary schools, and a nearby park — making it an excellent choice for families. Combining style, comfort, and practicality, the property is ready to move straight into.

The accommodation comprises; modern kitchen/diner, complete with integrated appliances and space for a dining table, while the generously sized living room opens onto the enclosed westerly-facing rear garden via sliding doors, creating a superb setting for both relaxation and entertaining.

In addition, the property benefits from a ground floor cloakroom for extra convenience.

Upstairs, the accommodation includes two double bedrooms, a versatile single bedroom, and a family bathroom with a modern white suite.

A particular highlight is the converted garage, now offering a flexible additional living space that could be used as a games room, home office, or family room — perfectly suited to today's lifestyle needs.

Externally, the property features a block-paved driveway with parking for up to three cars. The low-maintenance rear garden combines a patio area with artificial lawn, offering an inviting outdoor retreat.

Lounge 15'11" x 12'0" (4.87 x 3.68)

Kitchen / Diner 12'2" x 9'7" (3.71 x 2.94)

Garage Conversion 16'10" x 7'3" (5.14 x 2.22)

Bedroom One 14'8" x 9'8" (4.49 x 2.97)

Bedroom Two 12'7" x 9'8" (3.85 x 2.97)

Bedroom Three 9'0" x 6'0" (2.75 x 1.84)

Bathroom 5'10" x 5'5" (1.79 x 1.66)

Tenure Status - Freehold

Council Tax - Band B











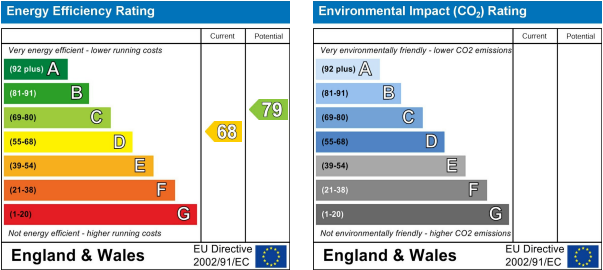
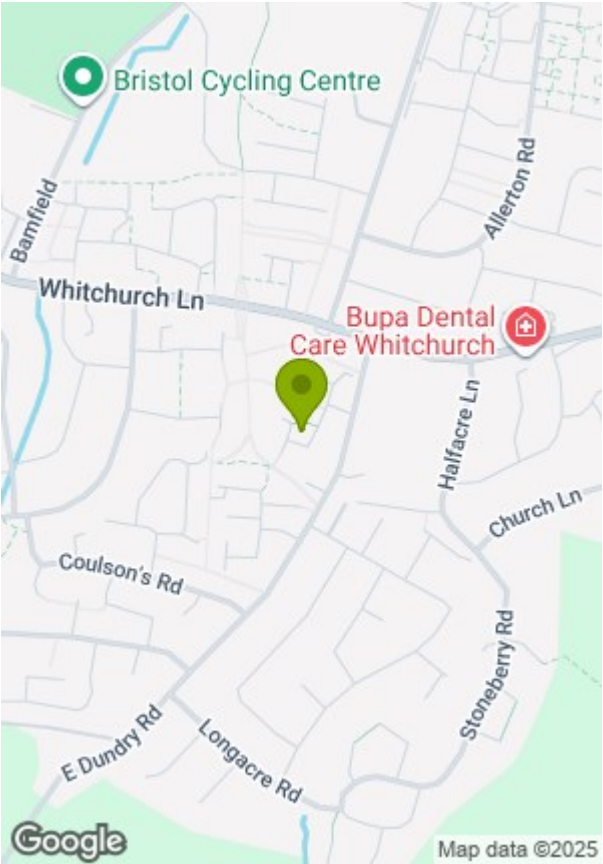
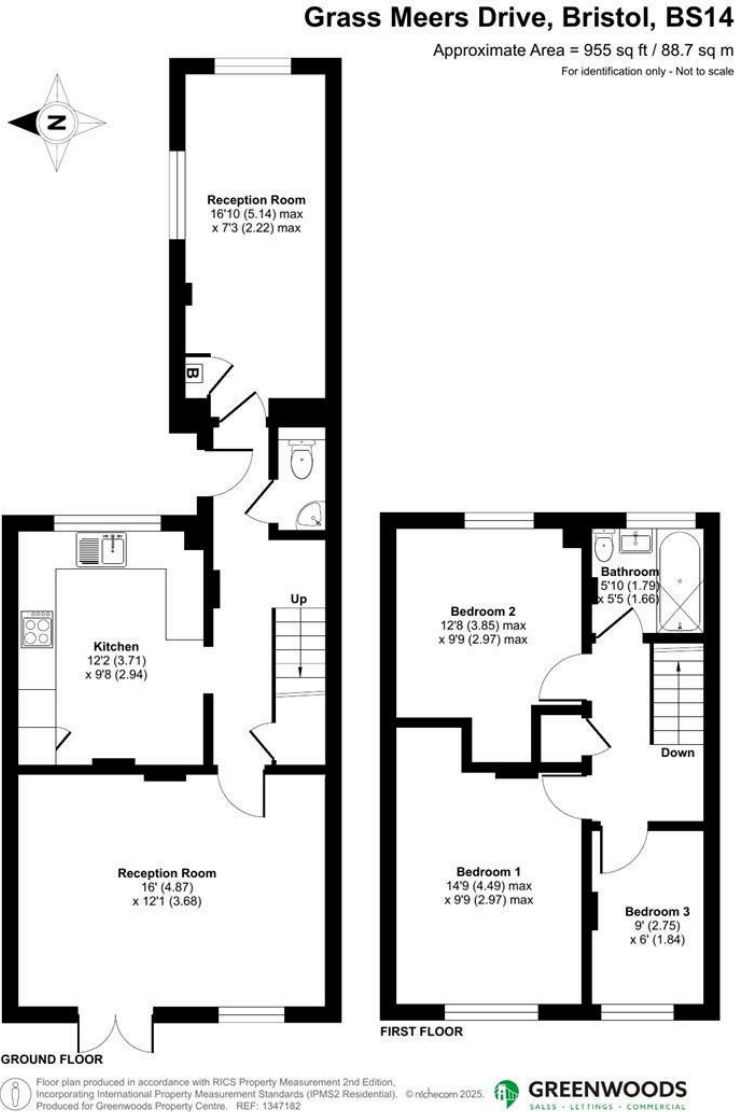












These particulars, whilst believed to be accurate are set out as a general outline only for guidance and do not constitute any part of an offer or contract. Intending purchasers should not rely on them as statements of representation of fact, but must satisfy themselves by inspection or otherwise as to their accuracy. No person in this firms employment has the authority to make or give any representation or warranty in respect of the property.