



**wj. meade**  
Estate Agents, Property Management & Lettings



**wj. meade**  
Estate Agents, Property Management & Lettings



**wj. meade**  
Estate Agents, Property Management & Lettings

ARROW ROAD, E3

£4,000 PER MONTH

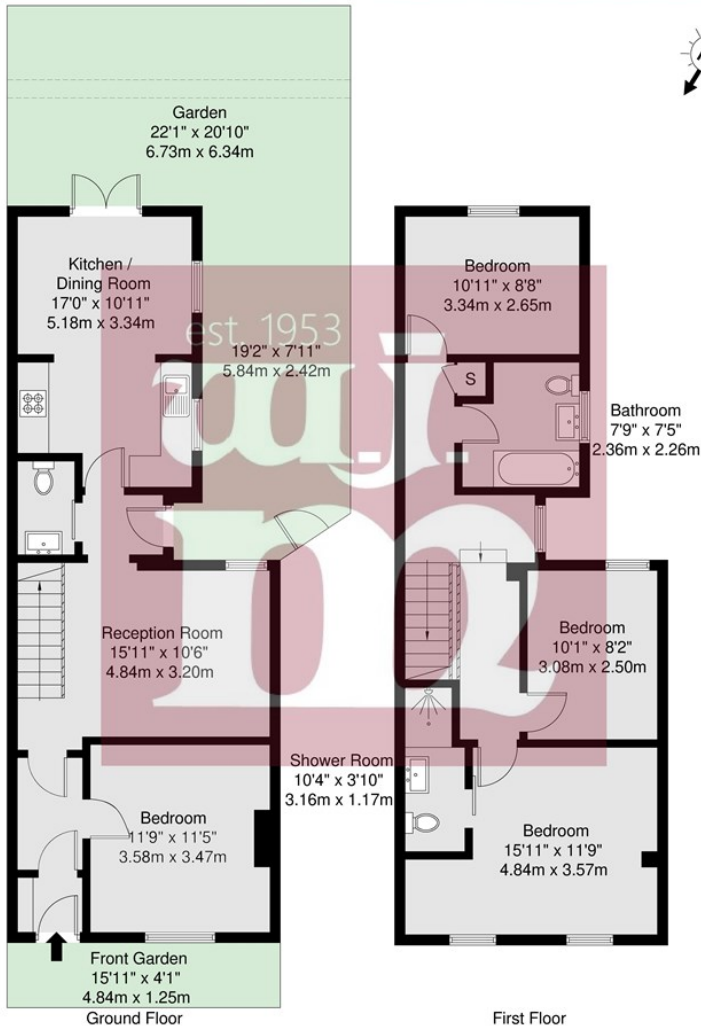
- HMO licence - suitable for sharers
- Two Bathrooms (and third toilet)
- Separate Lounge
- Four Double Bedrooms
- Private Low Maintenance Garden
- Large Kitchen/ Diner

**wj. meade**



Arrow Road, E3

GROSS INTERNAL AREA  
111 sq m / 1194 sq ft



GROSS INTERNAL AREA (GIA) The footprint of the property 111 sq m / 1194 sq ft	TOTAL STORAGE SPACE Storage and wardrobe total area 0.3 sq m / 3.0 sq ft	EXTERNAL FEATURES Garden, Balcony, Terrace, Verandah etc. 62.8 sq m / 675 sq ft	RESTRICTED HEAD HEIGHT Limited use areas under 1.5m 0.08sq m / 0.0 sq ft
---	--	---	--

Disclaimer: Floorplan measurements are approximate and are for illustrative purposes only. While we do not doubt the floorplan accuracy and completeness, you or your advisors should conduct a careful, independent investigation of the property in respect of monetary valuation.

Maison  
VUE



W J Meade are delighted to offer this Victorian terraced house to rent on Arrow Road, E3. Arranged over 1194sq ft, on the ground floor there is a reception room, large kitchen/breakfast room, guest cloakroom, and one of the double bedrooms. Upstairs, there are three double bedrooms (one having an en-suite shower room) and additional family bathroom.. Well situated on a residential turning close to Bow Road and Bromley-By-Bow tube stations as well as Bow Church DLR.

The building works on the street have now finished, but the street view has not been updated.

Deposit is 5 week's rent.

Service charge £n/a

Ground rent £n/a

Reserve fund £n/a

n/a years lease

Council tax band D

Current EPC Rating 69

Tenure:



All sizes are approximate. The Agent has not tested any apparatus, equipment, fixtures and fittings, or services and so cannot verify that they are in working order or fit for the purpose. A buyer is advised to obtain verification from their Solicitors or Surveyor. Photographs are for illustration purposes only and may depict items, which are not for sale or included in the sale price. References to tenure of a property are based upon information supplied by the vendor. The agent has not had sight of the title documents, a buyer is advised to obtain verification from their solicitor. Money Laundering Regulations 2003: Intending purchasers will be asked to produce identification, documentation at a later stage and we would ask for your co-operation in order that there will be no delay in agreeing the sale.

These particulars are intended to give a fair description of the property only and are in no way guaranteed, nor do any contract. They are issued on the express condition that all negotiations are conducted through W.J. Meade Estate Agents. All subject to contract and to being unsold.