



## LONDON ROAD SLOUGH, SL3 8QF

Welcome to this charming one-bedroom flat located on the second floor of Clarence Court, situated conveniently on London Road in Langley. This delightful property offers a modern open-plan living space that seamlessly combines the living area, dining space, and a well-equipped kitchen featuring fitted units, perfect for both relaxation and entertaining.

# £210,000



1

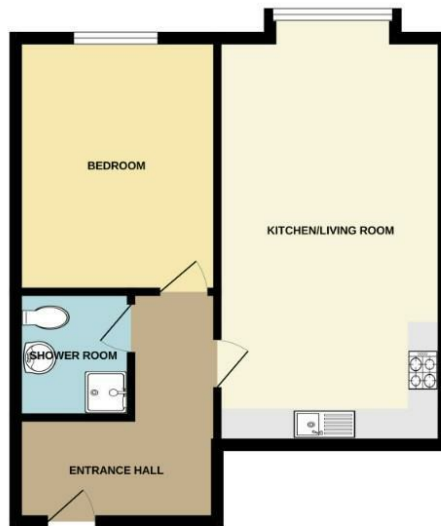


1



1

EPC C



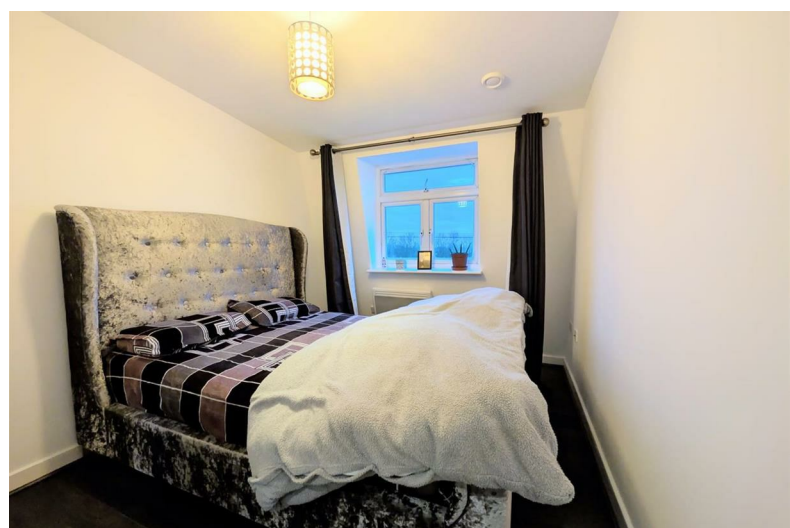
The flat comprises a comfortable bedroom and a well-appointed bathroom, making it an ideal choice for individuals or couples seeking a cosy home. The property also benefits from allocated parking for one vehicle, ensuring convenience for residents.

Positioned close to the M4 motorway, this flat provides excellent transport links for those commuting to London or other nearby areas. Additionally, you will find a variety of local amenities within easy reach, enhancing the appeal of this location.

With a lease of up to 107 years remaining, this property presents a fantastic opportunity for first-time buyers or investors looking to enter the market. Don't miss the chance to make this lovely flat your new home in Langley.

Great property for first time buyers. Please call Cameron King to arrange a viewing.

- One double bedroom apartment
- Second floor apartment
- Open plan living, diner and kitchen
- Allocated parking for one vehicle
- Well presented property
- Ideal for first time buyers
- Close to Langley M4 Motorway
- Close to local amenities



411 Bath Road, Slough, SL1 5QL  
t: 01628 667442  
e: sales@cameronking.co.uk

