



 4  2  2
Highlands, Tonyrefail Porth
£550,000

 peter
alan

01443 222851
talbotareen@peteralan.co.uk



About the property

This beautifully presented four-bedroom detached executive-style home in the sought-after area of Tonyrefail offers an exceptional blend of space, comfort, and practicality—perfectly suited for modern family living.

Set within private wraparound gardens, the property benefits from a generous wraparound driveway providing ample off-road parking, complemented by two gated entrances for added convenience and privacy. A double garage to the side further enhances the practicality of this impressive home.

Internally, the property boasts well-proportioned and thoughtfully laid-out accommodation. The ground floor features a spacious lounge that flows seamlessly into a dining area, creating an ideal space for both everyday living and entertaining. To the front, a second reception room offers flexibility as a sitting room, home office, or playroom. A downstairs WC completes the ground floor.

Upstairs, there are four generous bedrooms, including a superb master bedroom with en suite shower room. The remaining bedrooms are served by a well-appointed family bathroom.

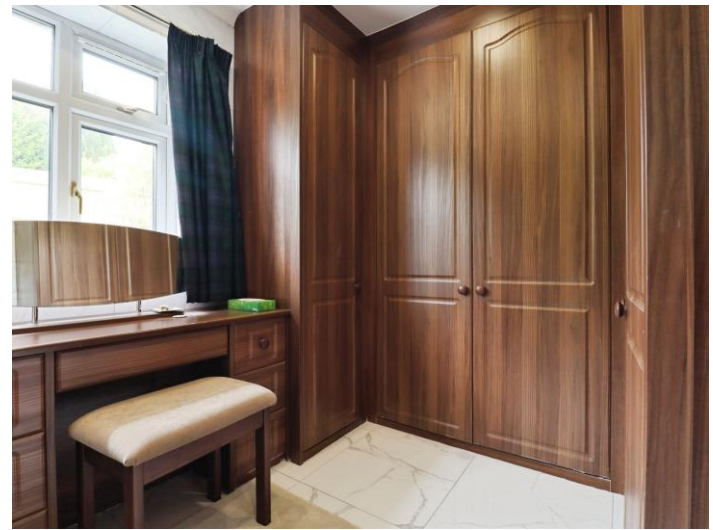
Externally, the private wraparound gardens provide a wonderful outdoor space for relaxation, play, and entertaining, making the most of the property's generous plot.

Ideally located within close proximity to local shops, schools, and everyday amenities, this home offers both convenience and a peaceful residential setting.

Accommodation









01443 222851

talbotgreen@peteralan.co.uk



Total floor area 284.5 m² (3,062 sq.ft.) approx

This floor plan is for illustrative purposes only. It is not drawn to scale. Any measurements, floor areas (including any total floor area), openings and orientation are approximate. No details are guaranteed, they cannot be relied upon for any purpose and they do not form part of any agreement. No liability is taken for any error, omission or misstatement. A party must rely upon its own inspection(s). Powered by www.propertybox.io



Important Information

Note while we endeavour to make our sales details accurate and reliable, if there is any point which is of particular interest to you, please contact the office and we will be pleased to confirm the position for you. We have not personally tested any apparatus, equipment, fixtures, fittings or services and cannot verify they are in working order or fit for their purposes. Nothing in these particulars is intended to indicate that carpets or curtains, furnishings or fittings, electrical goods (whether wired or not). Gas fires or light fittings or any other fixtures not expressly included form part of the property offered for sale. This computer generated Floorplan, if applicable, is intended as a general guide to the layout and design of the property. It is not to scale and should not be relied upon for dimensions. Tenure: We cannot confirm the tenure of the property as we have not had access to the legal documents. The buyer is advised to obtain verification from their solicitor or surveyor.

Peter Alan Limited is registered in England and Wales under company number 2073153, Registered Office is Cumbria House, 16-20 Hockliffe Street, Leighton Buzzard, Bedfordshire, LU7 1GN. VAT Registration Number is 500 2481 05. For activities relating to regulated mortgages and non-investment insurance contracts, Peter Alan Limited is an appointed representative of Connells Limited which is authorised and regulated by the Financial Conduct Authority. Connells Limited's Financial Services Register number is 302221. Most buy-to-let mortgages are not regulated.

