



**Guide Price**

**£370,000**

**Freehold**

3x  1x  2x 

**CPR Certificate Not Signed** Dorset Way, Maidstone,  
Kent ME15

*Wards*  
Helping you move forwards

Awaiting  
photo

Awaiting  
photo

Awaiting  
photo

Awaiting  
photo

Awaiting  
photo

Awaiting  
photo

## Main features

- Beautifully presented with neutral decor throughout
- Chain free, perfect first time buy
- Large garden with room to entertain family and friends
- Stunning kitchen/diner with quartz worktops
- Set in a quiet cul-de-sac nearby to schools, shops and amenities

## Accommodation

### GROUND FLOOR

#### HALLWAY

Lounge: 14'8 x 13'2 (4.47m x 4.02m)  
Kitchen/Diner: 20'9 x 10'7 (6.33m x 3.23m)  
Utility Room: 12'8 x 5'9 (3.86m x 1.75m)

### FIRST FLOOR

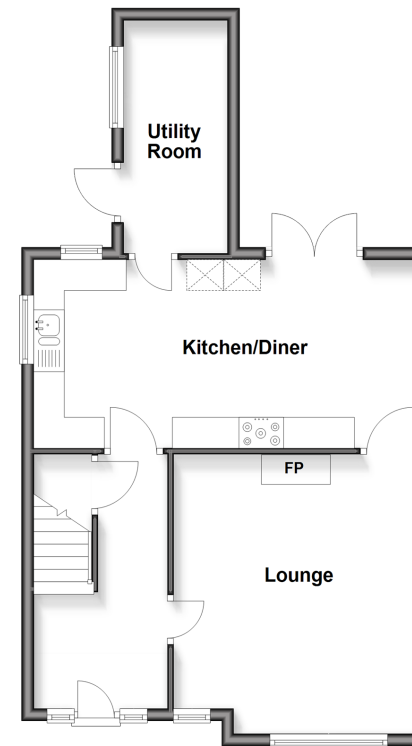
Landing  
Bedroom 1: 15'0 x 10'8 (4.58m x 3.25m)  
Bedroom 2: 10'7 x 10'4 (3.23m x 3.15m)  
Bedroom 3: 10'6 x 10'0 (3.20m x 3.05m)  
Bathroom

### OUTSIDE

Rear Garden  
Front Garden  
Off Road Parking

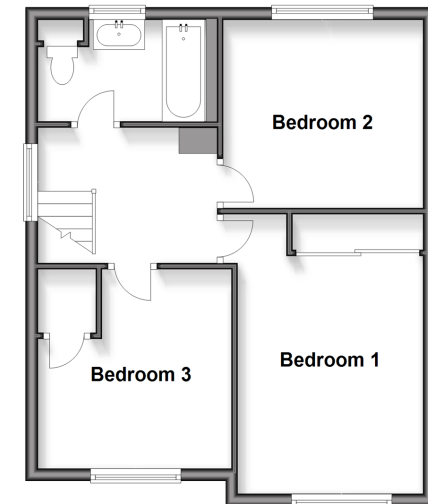
### Ground Floor

Approx. 54.0 sq. metres (581.4 sq. feet)



### First Floor

Approx. 47.8 sq. metres (514.9 sq. feet)



Call Maidstone - 01622 683737 ■ [wardsofkent.co.uk](http://wardsofkent.co.uk)

- Legal advice should be taken to verify fixtures/fittings, planning, alterations and/or lease details
- Appliances & services are untested, dimensions are approximate and floor plans are not to scale



13159242/20251120/CV/TB