



3 Bedrooms | 1 Bathrooms | 2 Reception Rooms

Kingsdown Avenue | South Croydon | CR2 6QR

£515,000

LOFT

Kingsdown Avenue |
South Croydon | CR2 6QR
£515,000

- Extended end of terrace home with single garage
- Bi-fold doors leading to the rear garden
- Heart of the home open-plan kitchen/diner with integrated appliances
- Separate reception room, perfect for a cosy lounge
- Three bedrooms to the first floor and fully tiled family bathroom
- Great primary and secondary schools within close proximity
- Within walking distance of bus links and Purley Oaks train station
- Chain free!

Ground Floor

Hallway

Reception Room

12'6 x 12'6 (3.81m x 3.81m)

Open Plan

Kitchen/Dining Room

18'9 x 17'7 (5.72m x 5.36m)

First Floor

Landing

Bedroom

12'7 x 12'6 (3.84m x 3.81m)

Bedroom

12'7 x 9'3 (3.84m x 2.82m)

Bedroom

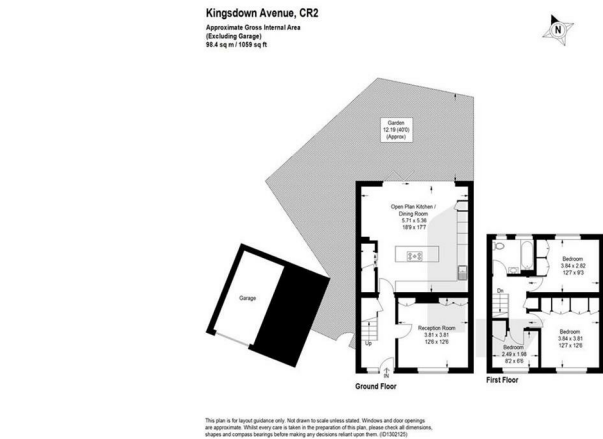
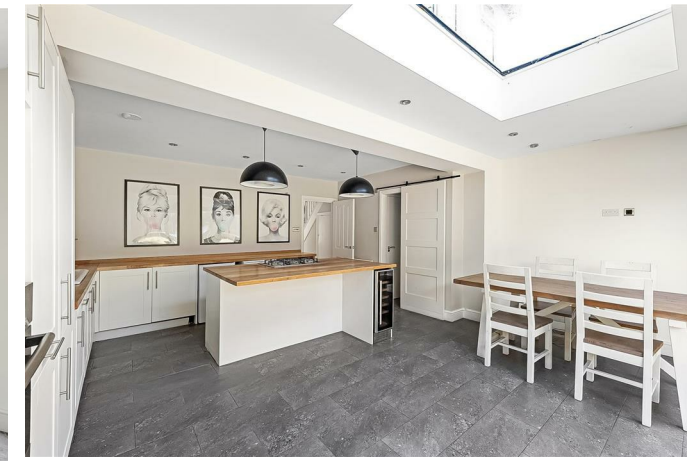
8'2 x 6'6 (2.49m x 1.98m)

Bathroom

Outside

Single Garage

Rear Garden



EPC Rating: D

23a High Street
Purley
Surrey
CR8 2AF
0208 660 8070
hello@loft-estates.co.uk